

PRINCIPAL APPLICATIONS

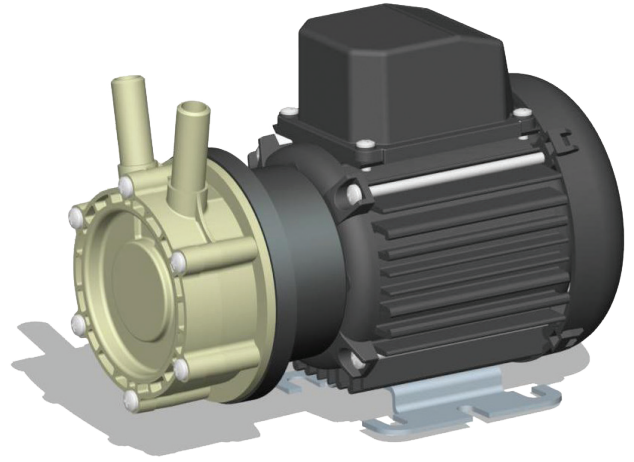
Designed for continuous recirculation of carbonated water, aggressive chemicals, chilled water, pure or precious liquids in high pressure systems.

WETTED MATERIALS

- PPS Pump Body
- PPS Spindle Housing
- LCP Impeller
- Nitrile O rings

FEATURES

- Manufactured in chemically resistant thermo-plastics
- Operating at an optimum flow rate of 5 litres/minute
- Magnetic coupling provides an energy efficient thermal shield, minimising heat transfer to pumped fluid
- Temperature stability and product purity ensured
- Leak-free continuous operation
- IPX5 motor enclosure
- Low condensation
- Zero maintenance
- Long life



OPTIONS

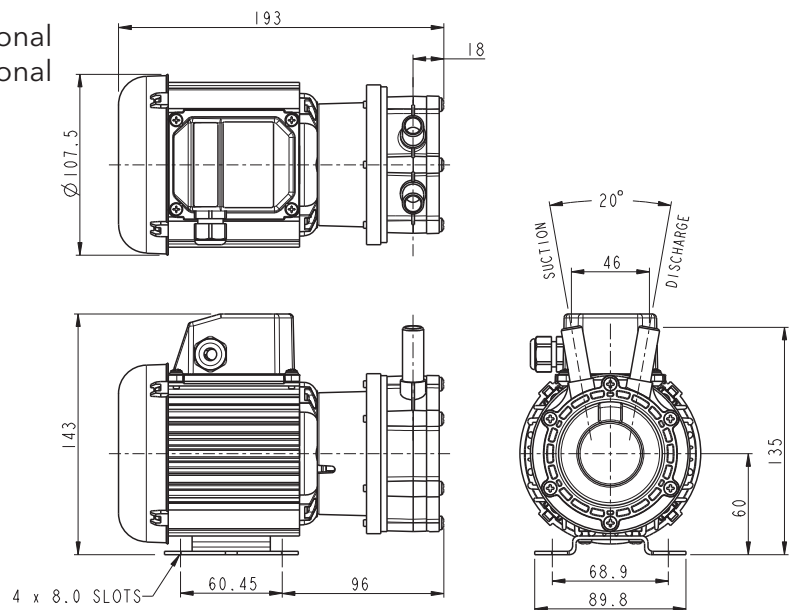
HPR10/15

230V 1Ph 50/60 Hz 1/2" standard, 15mm optional
110V 1Ph 50/60Hz 1/2" standard, 15mm optional

Port Details

DIMENSIONS

Drawings not to scale
Dimensions in millimetres

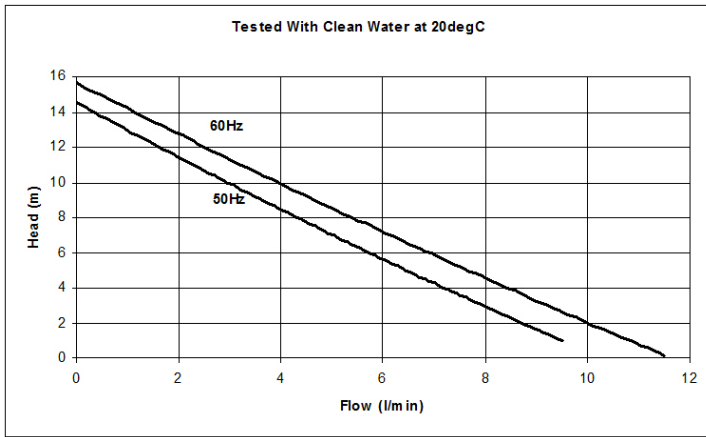


SPECIFICATION

Model	Overall height (mm)	Overall length (mm)	Overall width (mm)	Weight (kg)	Max body pressure (bar)	Run-out flow rate (l/min)	Closed valve head (m)	Temp range (degC)	*Max specific gravity	Motor output (watts)
HPR10/15	143	193	107	3.1	6	50 Hz 10.1	50 Hz 14.6	-20 to +85	1.0	60
						60 Hz 11.5	60 Hz 15.8			

*Assuming maximum viscosity of 30cp. Refer to Totton Pumps for higher viscosities and specific gravities

PERFORMANCE



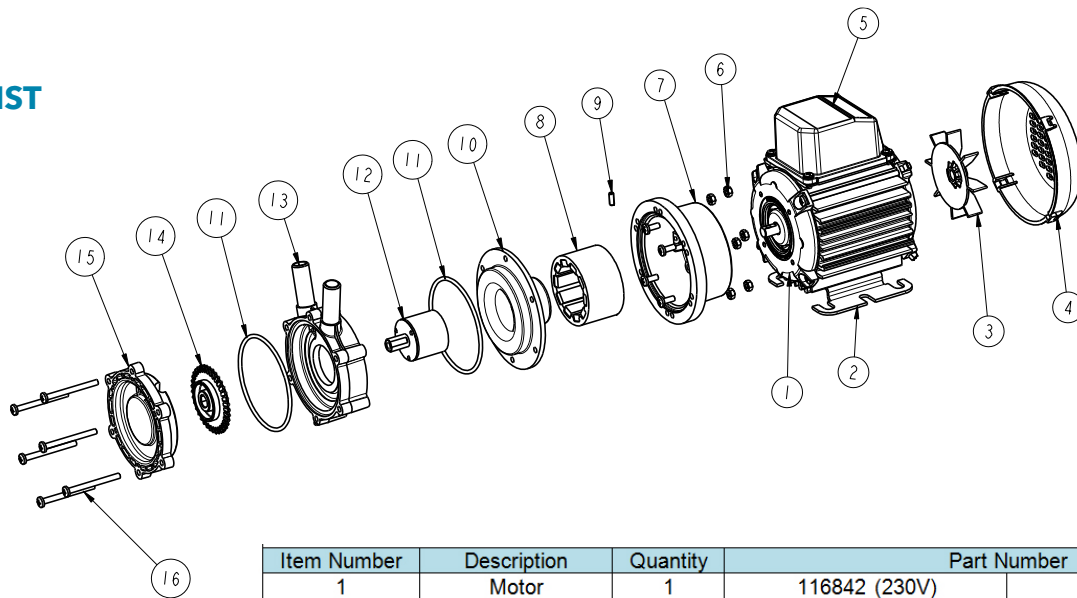
NOTE: These magnetically coupled pumps are designed for use with clean fluids.

Solids will cause jamming. Abrasives will reduce pump life and invalidate the warranty.

HPR pumps are not self priming and are not designed to run dry.

The company reserves the right to change specifications.

PART LIST



Item Number	Description	Quantity	Part Number	
1	Motor	1	116842 (230V)	116875 (110V)
2	Mounting Foot	1	036330	
3	Fan	1	046033	
4	Fan Cowl	1	036085	
5	Terminal Box	1	036078	
6	Nut	6	032105	
7	Adaptor	1	036324	
8	Drive Magnet	1	006287	
9	Grub Screw	1	001406	
10	Spindle Housing	1	036389	
11	O Ring	2	022845	
12	Driven Magnet	1	033291	
13	Pump Body	1	043316 1/2" ports	043318 15mm ports
14	Impeller	1	033286	
15	Front Plate	1	043320	
16	Screw	6	022060	

xylem
Let's Solve Water

www.xylem.com/flojet

Xylem Inc. – USA
17942 Cowan
Irvine, CA 92614

Xylem Inc. – UK
Harlow Innovation Park,
London Road,
Harlow, Essex, CM17 9LX

Xylem Inc. – CHINA
30/F Tower A, 100 Zunyi Road,
Shanghai 200051

Xylem Inc. – HUNGARY KFT
2700 Cegléd
Külso-Kátaí út 41

Xylem Inc. – AUSTRALIA
2/2 Capicure Drive
Eastern Creek, NSW 2766

Warranty: All products of the company are sold, and all services of the company are offered subject to the company's warranty and terms of sale, copies of which will be furnished upon request. Details correct at time of printing. We reserve the right to change specifications without prior notice.