

This document provides technical information relating to this specific Flojet model. General information references and further resource locations are also included.

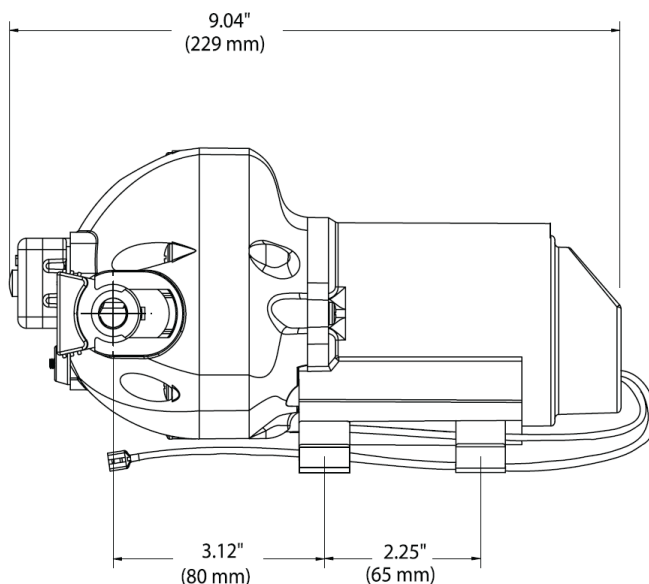
Flojet pumps are designed to be durable and high-performing - capable of providing years of satisfactory service in a variety of applications.

Features:

- Enclosed motor
- Integrated pressure switch
- Vibration & noise reducing base
- Self-priming
- Runs dry without damage

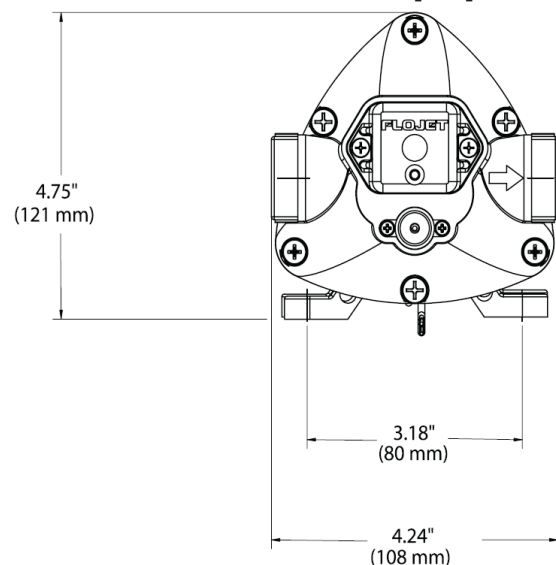
Contents:

Pump Unit:	Standard 12VDC 1.4GPM 30PSI Standard 12VDC 5.3LPM 2.1BAR
Port Fittings:	2 x 12mm JG Quick Connect
Strainer:	None included
IOM:	Included (PN 81000430)
Carton type:	4 Color Aftermarket
Master pack qty:	1



Dimensional Drawing

Notes: Inches [mm]



Specifications:

General

Part Number:	R3426504A
Aftermarket replacement:	R3426504A
Replaces (closest matches):	
Application:	RV Water Pressure System
Design:	3 Chamber Diaphragm Quick Connect Ports TENV Permanent Magnet Motor Noise Dampening Baseplate Thermal Motor Protection (TCO)

Materials (*designates wetted path)

Upper Housing*:	Glass-filled Polypropylene
Lower Housing:	Glass-filled Polypropylene
Check Valve Retainer*:	Polypropylene
Diaphragm*:	Santoprene
Check Valves*:	EPDM
Switch diaphragm*:	EPDM
Bypass Diaphragm*:	EPDM
PH Seals*:	EPDM
PH Fasteners:	Stainless Steel
Baseplate:	N/A - slide in rubber feet
Motor Casing:	Enclosed in protective plastic casing

Hydraulic Performance (at nominal voltage)

Open Flowrate:	1.4 GPM open flow (5.3 LPM)
Pressure Switch Cut-Off:	30 PSI (2.1 BAR)
Max Inlet Pressure:	10 PSI (0.7 BAR)
Internal Bypass:	Yes
Fluid Temperature Range:	32°F - 140°F (0°C - 60°C)
Self-Priming Capability:	Up to 8 ft (2.4 m) dry prime
Run-Dry Capable:	Yes

Electrical Performance (at nominal voltage)

Nominal Voltage:	12 VDC
Voltage Range:	9 VDC - 13.6 VDC
Max Current Draw:	2.2 Amps @ 30 PSI (2.1 BAR)
Fuse Size:	5 Amps (not included)
Duty Cycle:	Intermittent (See heat-rise chart)
Leads:	12" (305mm), 16 AWG (1.5mm ²)
Wire Connection:	Stripped Wire

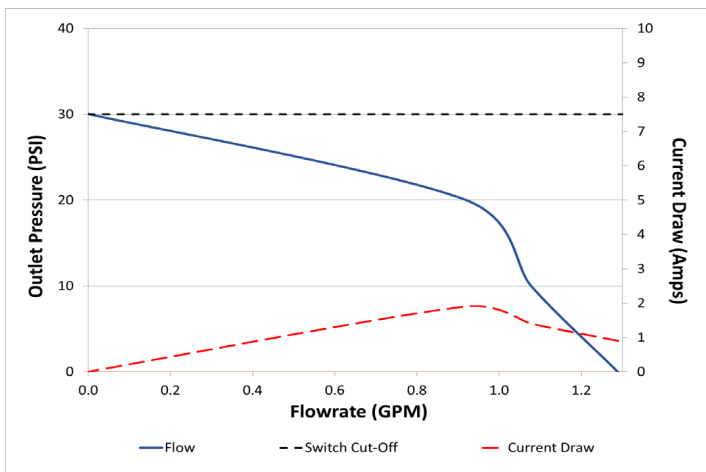
Compliance

CE:	Yes
UKCA:	Yes
CSA:	Yes
WEEE:	Yes
Country of Origin:	China
HTS Code:	8413.50.0050

Other Information

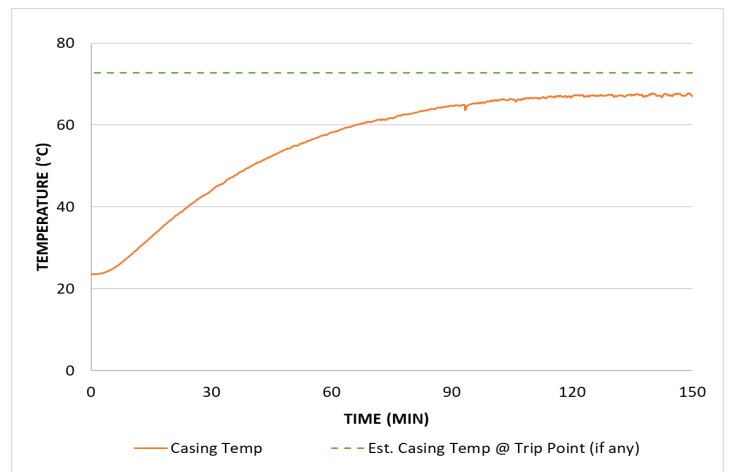
Operating Environment:	RV
Ambient Temp Range:	32°F - 140°F (0°C - 60°C)
IP Rating:	IPX4
Carton Dimensions:	13.5x5.5x5" (343x140x127mm)
Weight (pump only):	3.5 lbs (1.59 kg)
UPC Code:	705474222384

Flowcurve



Representative curve of unit operated at nominal voltage. Performance will vary somewhat unit to unit. Switch cut-off represents the point on the flow curve at which the integrated pressure switch will turn off the pump.

Heat-Rise

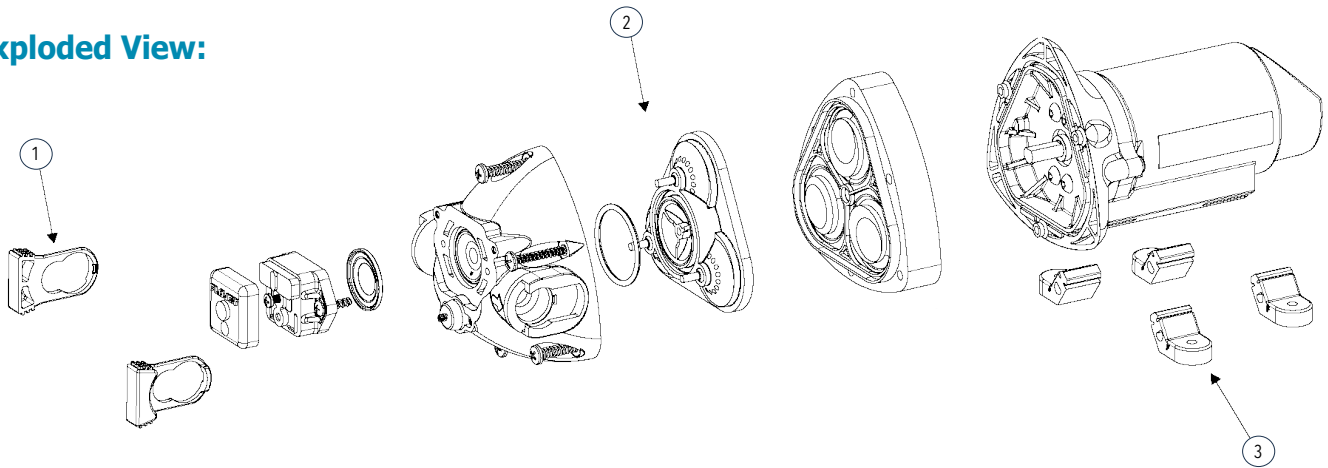


Tested @ ambient temp of 72°F (22°C) @ PSI max pressure. If there is a concern about the ability of the pump to run continuously for long periods of time, then in-application testing is highly recommended.

Pump Service Kits & Spares:

ITEM	PART NUMBER	DESCRIPTION
1. Port Clips	21000407A	2 port clips per kit
2. Check Valve Assembly	20407034	Check valve housing with suction and discharge check valves installed
3. Baseplate/Mounting Feet	20717001A	Rubber mounting feet (qty 4)

Exploded View:



Accessories (see website for further info):

Freshwater Delivery System Accumulator	305730004A	1 Liter Pressurized Tank	Used to smooth out flow, reduce cycling for freshwater water pressure systems. See website for more details. Do not use with variable speed
Strainers (Required in all applications)	01740000S	In-line, 3/4" (19mm) HB inlet	HB = Hose Barb Place before inlet of the pump so as to filter the incoming water and protect the check valves and pressure switch from getting clogged. Other options available as well. See website for more detail.
	01740002S	In-line, 1/2" (13mm) HB inlet	
	01740004S	In-line, 1/2"-14 NPSM (13mm) inlet	
	01740010S	90 degree, 3/4" (19mm) HB inlet	
	01740012S	90 degree, 1/2" (13mm) HB inlet	
	01740014S	90 degree, 1/2"-14 NPSM (13mm) inlet	
	01740300A	In-line, Quick-Connect inlet	
	01740375S	In-line, 3/8" (10mm) NPT(f) inlet	
Port Fittings	01740950S	90 degree, 3/4" Quick-Connect inlet	All part numbers are 2-pack kits Threaded = NPSM Not all models have 90 degree equivalents
	20381000	1/2"-14 NPSM straight (13mm)	
	20381002	1/2" (13mm) hose barb straight	
	20381003	5/8" (16mm) hose barb straight	
	20381006	3/4" (19mm) hose barb straight	
	20381007	Garden hose adapter	
	20381008	1/2"-14 NPSM elbow (13mm)	
	20381009	1/2" (13mm) hose barb elbow	
	20381010	3/4" (19mm) hose barb elbow	
Water Pressure Regulators	20381024	10/13mm hose barb elbow	Reduce high water pressure up to 150 psi (10 bar) down to 45 psi (3.1 bar)
	20381026	10/13mm hose barb straight	
	01750045	In-line 3/4" (19mm) GHT Inlet	
	01750145	White Flush 3/4" (19mm) GHT Inlet	
	01750245	Chrome Flush 3/4" (19mm) GHT Inlet	

RV Application Notes:

Freshwater Delivery Pumps -

Installed to provide on-demand flow and pressure of freshwater to sinks, showers, washing machines, etc. Typical rule of thumb for sizing is 1 GPM per outlet. 40-60 psi (2.8 - 4.1 Bar) options provide similar pressure to that in a home. These pumps are equipped with a bypass which enables smoother flow and decreases cycling. Common accessories include strainers, water pressure inlet regulators, and accumulator tanks

Available Flojet RV Water System Options

In addition to the unit described in this datasheet Flojet also offers the following configurations (will vary somewhat by region and model type) and options for RV water systems:

Voltages:	12 & 24 VDC options
Flowrate Range:	1 - 4 GPM (3.8 - 15 LPM)
Switch Setting Range:	35 - 50 PSI (2.4 - 3.4 Bar)
Pump Configurations:	Freshwater Delivery Pumps
OEM/Special Options:	We can configure specific product or kitting levels upon request. Minimum annual volume requirements will apply. Please send us an inquiry and we will evaluate.

Installation and Operation

For guidance on proper installation and operation of this pump, as well as for any warnings or cautions involving use, please consult the appropriate IOM for the pump. Printed IOM's are supplied with the pumps and are also available online.

Resources & Contact Information

IOM:	On website; hard copies with pumps	Customer Service:	Refer to contact info at our website
Warranty:	Information included in IOM	Website:	www.xylem.com/Flojet

Note: Specifications provided for guidance only. We reserve the right to change specifications without prior notice.



Xylem Inc. — USA
17942 Cowan
Irvine, CA 92614

Xylem Inc. — UK
Harlow Innovation Park,
London Road,
Harlow, Essex, CM17 9LX

Xylem Inc. — CHINA
30/F Tower A, 100 Zunyi Road,
Shanghai 200051

Xylem Inc. — HUNGARY KFT
2700 Cegléd
Külso-Kátaí út 41

Xylem Inc. — AUSTRALIA
2/2 Capicure Drive
Eastern Creek, NSW 2766

www.xylem.com/flojet

© 2023 Xylem Inc. All rights reserved
Flojet is a trademark of Xylem Inc. or one of its subsidiaries
R3426504A Rev. A 04/2024