

**JOB:**
**REPRESENTATIVE:**

UNIT TAG:

ORDER NUMBER:

DATE:

ENGINEER:

SUBMITTED BY:

DATE:

CONTRACTOR:

APPROVED BY:

DATE:



## TECHNOFORCE™ HVAC PACKAGE SYSTEM

### 575 V-2 Pumps

**CONSTRUCTION MATERIALS:**

- 304 SS Grooved Manifolds
- Cast Iron ASTM A48 Class 30B Pump Casing
- 304 Stainless Steel Impeller
- 304 Stainless Steel Shaft Sleeves
- Carbon/Ceramic/Buna Mechanical Seal Assembly

**OPERATING DATA:**

- 2 Pump Configuration
- Up to 2280 GPM (2 Pumps) 518 m<sup>3</sup>/h
- Up to 110 Feet of Head (34m) and 175 PSI Boost
- 230, 460 and 575V Configurations Available
- UL Type 1 Control Enclosures and UL Type 12 VFD Enclosures are Standard
- Trending Screen
- Dynamic Flow Loss Compensation
- BACnet MSTP or IP; MODBUS® Serial or TC

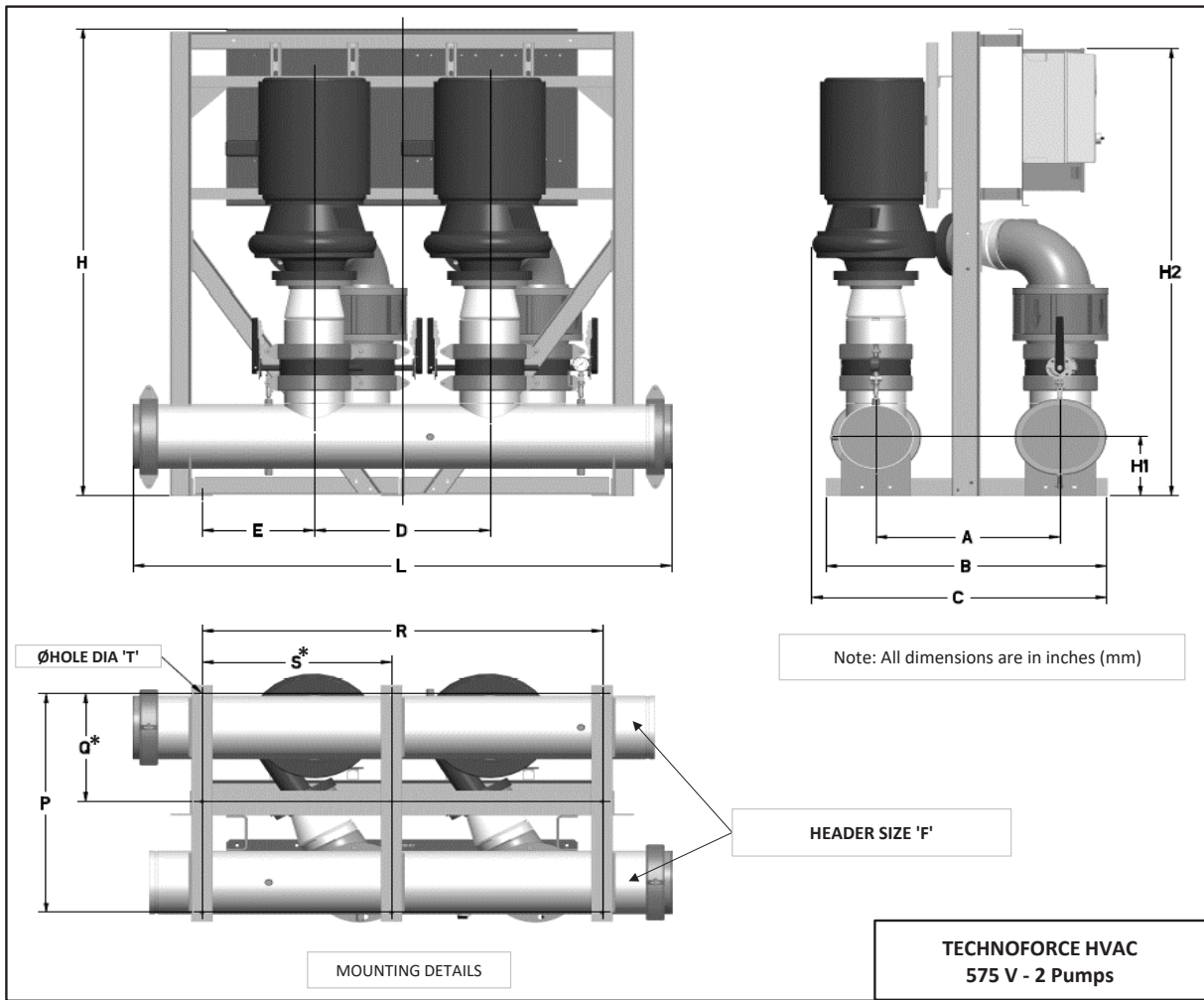
**DESCRIPTION**

The TECHNOFORCE HVAC Package System is configurable with either 2 or 3 Bell & Gossett e-1531 pumps. System control is sensorless with each package pre-programmed at our facility. Optional flow splits ensure complete system redundancy and peace of mind for your HVAC pumping needs. (Three pump configuration pictured above.)

SKID PART NUMBER	A	B	C	H	H1	H2	E	D	L	Wt. lb(kg)
HPS2E5BD284S1E8MP10BG	26.25" (667)	40" (1016)	42" (1067)	79" (2007)	10" (254)	75.6" (1920)	16" (406)	25" (635)	76.68" (1948)	3709 (1682.4)
HPS2E4BD256S1E8LP08BG	20.04" (509)	32" (813)	34.75" (883)	74.5" (1892)	7.63" (194)	71.1" (1806)	13" (330)	26" (660)	79.68" (2024)	2594 (1176.6)
HPS2E3AD256S1E4LP08BG	20.56" (522)	32" (813)	32.75" (832)	74.5" (1892)	7.63" (194)	71.1" (1806)	13" (330)	26" (660)	79.68" (2024)	2560 (1161.2)
HPS2E3BD254S1E8KP08BG	21.75" (552)	32" (813)	34.13" (867)	74.5" (1892)	7.63" (194)	71.1" (1806)	17" (432)	26" (660)	79.68" (2024)	2454 (1113.1)

SKID PART NUMBER	MOUNTING DETAILS					HEADER SIZE 'F'
	P	Q*	R	S*	HOLE DIA 'T'	
HPS2E5BD284S1E8MP10BG	37" (940)	18.8" (478)	57" (1448)	27" (686)	0.625" (16)	10" (254)
HPS2E4BD256S1E8LP08BG	29" (737)	NA	63" (1600)	30" (762)	0.625" (16)	8" (203)
HPS2E3AD256S1E4LP08BG	29" (737)	NA	63" (1600)	30" (762)	0.625" (16)	8" (203)
HPS2E3BD254S1E8KP08BG	29" (737)	NA	63" (1600)	30" (762)	0.625" (16)	8" (203)

Q\*, S\* = These dimensions are not necessarily applicable for all packages. NA (Not Applicable) is mentioned for such cases in the table. All dimensions are in inches (mm). Dimensions are subject to change. Not to be used for construction purposes unless certified.



### Xylem Product Cybersecurity

Xylem values your system security and the availability of your critical services. For more information on Xylem cybersecurity practices or to contact the cybersecurity team please visit [xylem.com/security](http://xylem.com/security).



Xylem Inc.  
8200 N. Austin Avenue  
Morton Grove, IL 60053  
Tel: (847) 966-3700 Fax: (847) 965-8379  
[www.xylem.com/bellgossett](http://www.xylem.com/bellgossett)

Xylem, Bell & Gossett and TECHNOFORCE are trademarks or registered trademarks of Xylem Inc. or one of its subsidiaries. MODBUS is a registered trademark of Schneider Electric USA, Inc. All other trademarks or registered trademarks are property of their respective owners.  
© 2022 Xylem Inc. BGHP575V2-SUB-509 R1 November 2022