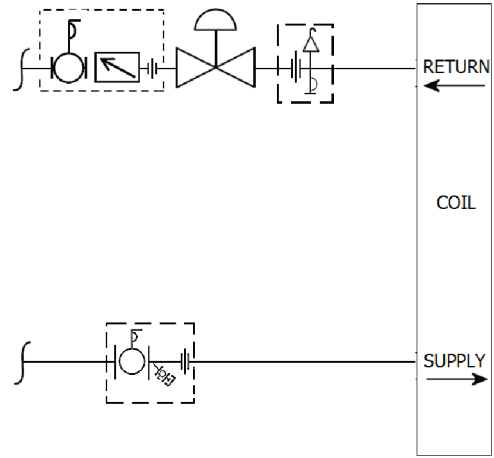
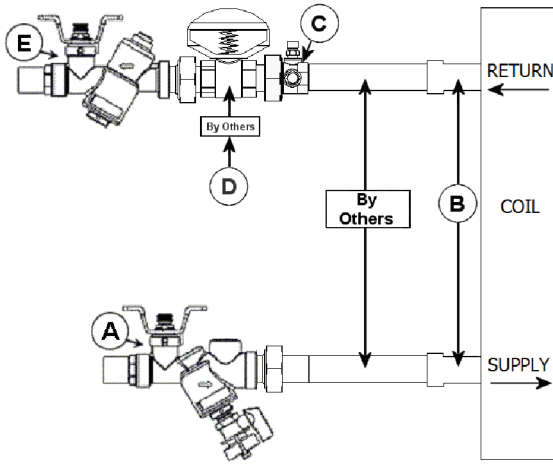


|   |   |  |
|---|---|--|
| <b>JOB:</b><br><br><br><b>UNIT TAG:</b><br><b>ENGINEER:</b><br><b>CONTRACTOR:</b> | <b>REPRESENTATIVE:</b><br><br><br><b>ORDER NO.</b><br><b>SUBMITTED BY:</b><br><b>APPROVED BY:</b> | <b>DATE:</b><br><b>DATE:</b><br><b>DATE:</b> |
|---|---|--|

# Circuit Sentry™ ACL2Y VALVE KIT



**DESCRIPTION**

The Bell & Gossett ACL2Y Valve Kit is a packaged and partially pre-assembled collection of common components required for commissioning a terminal unit. Temperature control valves, piping and coils are not supplied by B&G.

The ACL2Y Kit consists of:

| Balloon | Part Number | Inlet Connection | Outlet Connection | Description   |
|---------|-------------|------------------|-------------------|---|
| A       |             |                  |                   | <b>Model UBYL</b> - Combination Wye Strainer and Shut Off Valve for Low Flow Applications with one Pressure / Temperature Port, Drain Valve, Tailpiece and Union End.   |
| B       |             |                  |                   | Connection Size for Coil/Terminal   |
| C       |             |                  |                   | <b>Model UA</b> - Union Accessory with one Pressure / Temperature Port, Manual Air Vent, Tailpiece and Union End.   |
| D       |             |                  |                   | Connection Size for Two-Way Temperature Control Valve (by others)   |
| E       |             |                  |                   | <b>Model ACL</b> - Circuit Sentry™ - Automatic Flow Limiting, Commissioning and Shut-off Valve for Low Flow Applications with Adjustable Diaphragm Flow Cartridge, one Pressure / Temperature Port, Tailpiece, and Union End. |

