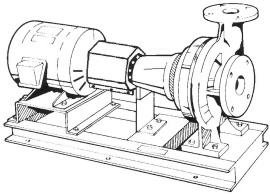




JOB:	REPRESENTATIVE:	
UNIT TAG:	ORDER NO.	DATE:
ENGINEER:	SUBMITTED BY:	DATE:
CONTRACTOR:	APPROVED BY:	DATE:



5EB

Series e-1510

Centrifugal Pumps - Base Mounted

SPECIFICATIONS

FLOW _____ HEAD _____
 HP _____ RPM _____
 VOLTS _____
 CYCLE _____ PHASE _____
 ENCLOSURE _____
 APPROX. WEIGHT _____
 SPECIALS _____

MATERIALS OF CONSTRUCTION

Stainless Steel Fitted

FEATURES

- ANSI/OSHA Coupling Guard
- Center Drop Out Spacer Coupling
- Fabricated Heavy Duty Baseplate

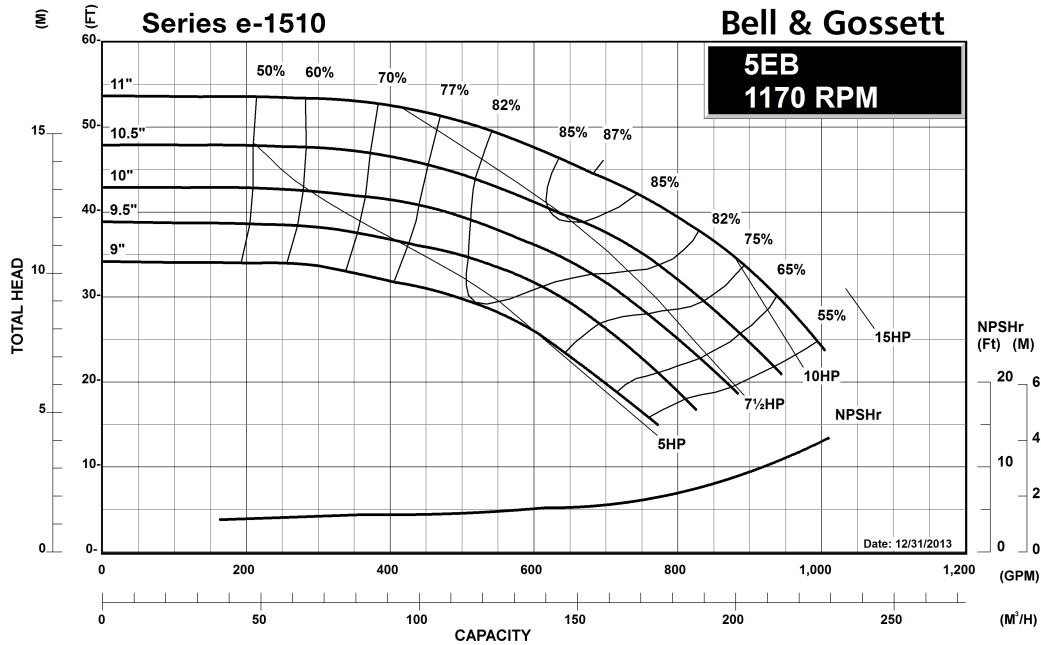
MAXIMUM WORKING PRESSURE

- 175 psi (12 bar) W.P. w/ 125# ANSI flange drilling
- 250 psi (17 bar) W.P. w/250# ANSI flange drilling (requires 1510-S)

TYPE OF SEAL

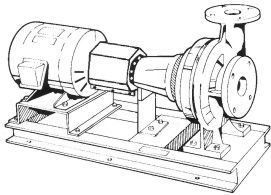
- Standard Seal (Buna-Carbon/Ceramic)
- F Standard Seal w/ Flush Line (Buna-Carbon/Ceramic)
- S Stuffing Box Construction w/ Flushed Mechanical Single Seal (EPR-Tungsten Carbide/Carbon)
- PF Stuffing Box Construction w/ Packing (Graphite Impregnated Teflon)

Note: Equipped with NEOPRENE coupling





JOB: UNIT TAG: ENGINEER: CONTRACTOR:	REPRESENTATIVE: ORDER NO. SUBMITTED BY: APPROVED BY:	DATE: DATE: DATE:
---	---	--



5EB

Series e-1510

Centrifugal Pumps - Base Mounted

SPECIFICATIONS

FLOW _____ HEAD _____

HP _____ RPM _____

VOLTS _____

CYCLE _____ PHASE _____

ENCLOSURE _____

APPROX. WEIGHT _____

SPECIALS _____

MATERIALS OF CONSTRUCTION

STAINLESS STEEL FITTED

FEATURES

- ANSI/OSHA Coupling Guard
- Center Drop Out Spacer Coupling
- Fabricated Heavy Duty Baseplate

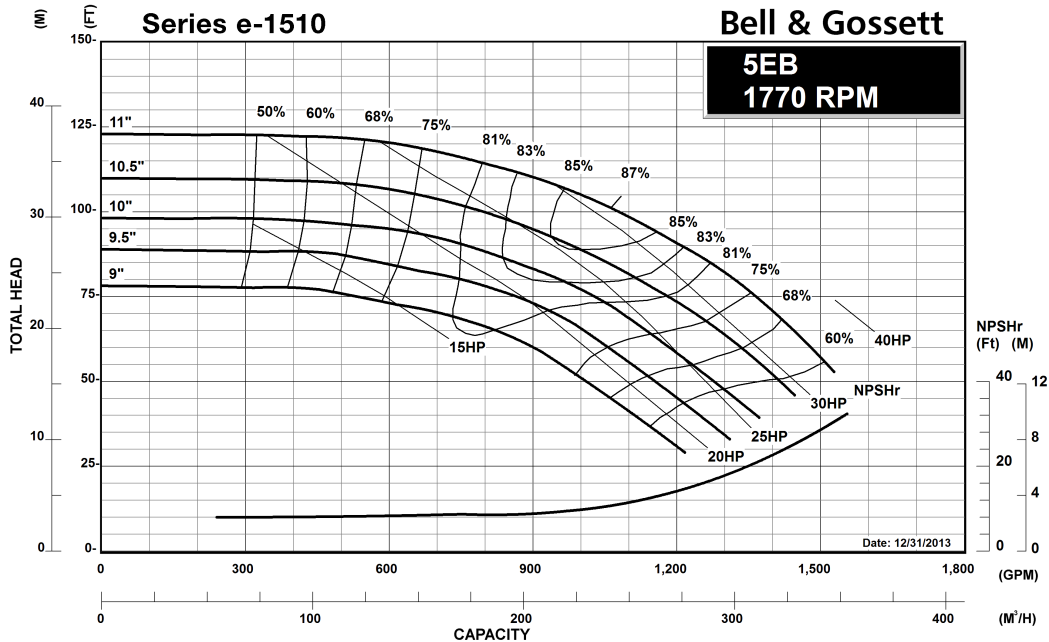
MAXIMUM WORKING PRESSURE

- 175 psi (12 bar) W.P.
w/125# ANSI flange drilling
- 250 psi (17 bar) W.P.
w/250# ANSI flange drilling
(requires 1510-S)

TYPE OF SEAL

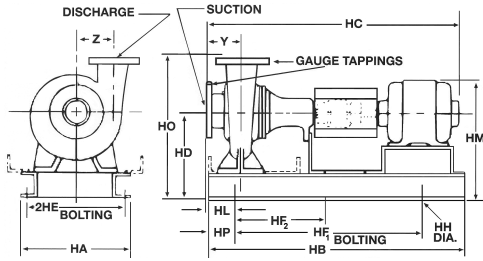
- Standard Seal
(Buna-Carbon/Ceramic)
- F Standard Seal w/ Flush Line
(Buna-Carbon/Ceramic)
- S Stuffing Box Construction w/ Flushed
Mechanical Single Seal
(EPR-Tungsten Carbide/Carbon)
- PF Stuffing Box Construction w/ Packing
(Graphite Impregnated Teflon)

Note: Equipped with NEOPRENE coupling



Series e-1510 5EB Centrifugal Pump Submittal

B-880.36C



FLANGE DIMENSIONS IN INCHES (MM)			
	SIZE	THICKNESS	O.D.
Discharge	5" (127)	1-3/8" (35)	10-3/4" (273)
Suction	6" (152)	1-7/16" (37)	12-1/8" (308)

MAXIMUM WORKING PRESSURE 250 PSI
 FLANGES ARE 125# ANSI - STANDARD
 250# ANSI - AVAILABLE

DIMENSIONS - Inches (mm)

STANDARD SEAL

MOTOR FRAME	HA	HB	HC MAX	HD	2HE	HF ₁	HF ₂	HH	HL	HM MAX	HO	HP	Y	Z
	"L" FRAME													
254T	16 (406)	46-1/2 (1181)	46-3/4 (1187)	15 (381)	14 (356)	36-1/2 (927)	18-1/4 (464)	7/8 (22)	4-7/16 (113)	21-7/8 (556)	25-1/2 (648)	5 (127)	5-35/64 (141)	7-15/16 (202)
256T	16 (406)	46-1/2 (1181)	48-1/2 (1232)	15 (381)	14 (356)	36-1/2 (927)	18-1/4 (464)	7/8 (22)	4-7/16 (113)	21-7/8 (556)	25-1/2 (648)	5 (127)	5-35/64 (141)	7-15/16 (202)
284T	16 (406)	51-3/4 (1314)	49-1/4 (1251)	15 (381)	14 (356)	41-3/4 (1060)	20-7/8 (530)	7/8 (22)	4-7/16 (113)	23 (584)	25-1/2 (648)	5 (127)	5-35/64 (141)	7-15/16 (202)
286T	16 (406)	51-3/4 (1314)	50-3/4 (1289)	15 (381)	14 (356)	41-3/4 (1060)	20-7/8 (530)	7/8 (22)	4-7/16 (113)	23 (584)	25-1/2 (648)	5 (127)	5-35/64 (141)	7-15/16 (202)
324T	16 (406)	51-3/4 (1314)	53 (1346)	15 (381)	14 (356)	41-3/4 (1060)	20-7/8 (530)	7/8 (22)	4-7/16 (113)	24-1/8 (613)	25-1/2 (648)	5 (127)	5-35/64 (141)	7-15/16 (202)

STUFFING BOX

MOTOR FRAME	HA	HB	HC MAX	HD	2HE	HF ₁	HF ₂	HH	HL	HM MAX	HO	HP	Y	Z
	"L" FRAME													
254T	16 (406)	51-3/4 (1314)	49-1/8 (1248)	15 (381)	14 (356)	41-3/4 (1060)	20-7/8 (530)	7/8 (22)	4-7/16 (113)	21-7/8 (555)	25-1/2 (648)	5 (127)	5-35/64 (141)	7-15/16 (202)
256T	16 (406)	51-3/4 (1314)	50-7/8 (1292)	15 (381)	14 (356)	41-3/4 (1060)	20-7/8 (530)	7/8 (22)	4-7/16 (113)	21-7/8 (555)	25-1/2 (648)	5 (127)	5-35/64 (141)	7-15/16 (202)
284T	16 (406)	51-3/4 (1314)	51-5/8 (1311)	15 (381)	14 (356)	41-3/4 (1060)	20-7/8 (530)	7/8 (22)	4-7/16 (113)	23 (584)	25-1/2 (648)	5 (127)	5-35/64 (141)	7-15/16 (202)
286T	16 (406)	51-3/4 (1314)	53-1/8 (1349)	15 (381)	14 (356)	41-3/4 (1060)	20-7/8 (530)	7/8 (22)	4-7/16 (113)	23 (584)	25-1/2 (648)	5 (127)	5-35/64 (141)	7-15/16 (202)
324T	16 (406)	51-3/4 (1314)	55-3/8 (1407)	15 (381)	14 (356)	41-3/4 (1060)	20-7/8 (530)	7/8 (22)	4-7/16 (113)	24-1/8 (613)	25-1/2 (648)	5 (127)	5-35/64 (141)	7-15/16 (202)

Dimensions are subject to change. Not to be used for construction purposes unless certified.



Xylem Inc.
 8200 N. Austin Avenue, Morton Grove, IL 60053
 Phone: (847)966-3700 Fax: (847)965-8379
 www.bellgossett.com
 Bell & Gossett is a trademark of Xylem Inc. or one of its subsidiaries.
 © 2016 Xylem Inc.