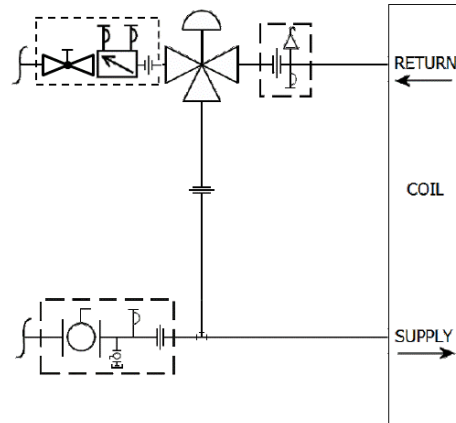
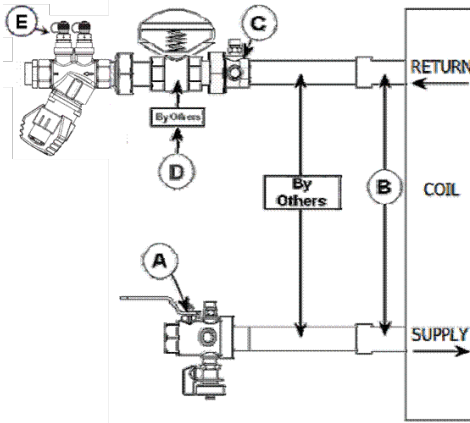


JOB: UNIT TAG: ENGINEER: CONTRACTOR:	REPRESENTATIVE: ORDER NO.: SUBMITTED BY: APPROVED BY: DATE: DATE: DATE:
-----------------------------------------------------------------------------------	--------------------------------------------------------------------------------------------------------------------------------------------------------

Circuit Sentry Flo-Setter II AF2B Valve Kit



DESCRIPTION

The Bell & Gossett AF2B Valve Kit is a packaged and partially pre-assembled collection of common components required for commissioning a terminal unit. Temperature control valves, piping and coils are not supplied by B&G.

The AF2B Kit consists of:

Balloon	Part Number	Inlet Connection	Outlet Connection	Description
A				Model UBV - Combination Shut Off Valve and Union End with one Pressure / Temperature Port, Drain Valve and Tailpiece.
B				Connection Size for Coil/Terminal
C				Model UA - Union Accessory with one Pressure / Temperature Port, Manual Air Vent, Tailpiece and Union End.
D				Connection Size for Two-Way Temperature Control Valve (by others)
E				Model AF - Circuit Sentry™ Flo-Setter II - Externally Adjustable Balance and Commissioning Valve with Integral Isolation/Shut Off Capability, two Pressure/Temperature Ports, Tailpiece, and Union End.