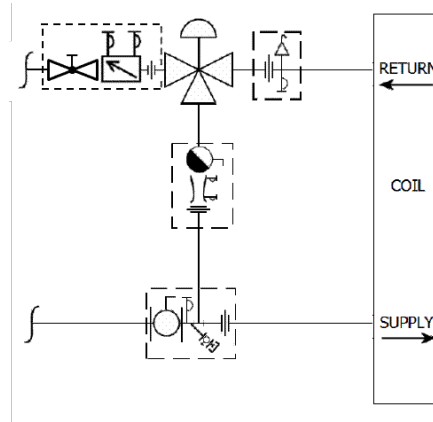
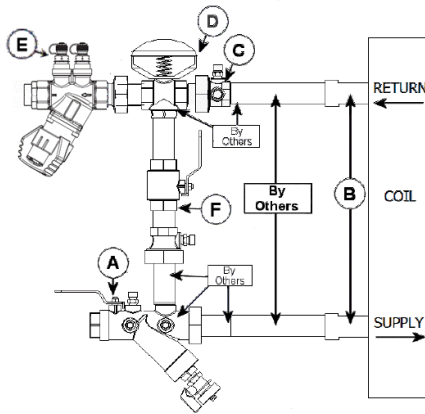


|                    |                        |              |
|--------------------|------------------------|--------------|
| <b>JOB:</b>        | <b>REPRESENTATIVE:</b> |              |
| <b>UNIT TAG:</b>   | <b>ORDER NO.:</b>      | <b>DATE:</b> |
| <b>ENGINEER:</b>   | <b>SUBMITTED BY:</b>   | <b>DATE:</b> |
| <b>CONTRACTOR:</b> | <b>APPROVED BY:</b>    | <b>DATE:</b> |

## Circuit Sentry Flo-Setter II AF3YMV Valve Kit



**DESCRIPTION**

The Bell & Gossett AF3YMV Valve Kit is a packaged and partially pre-assembled collection of common components required for commissioning a terminal unit. Temperature control valves, piping and coils are not supplied by B&G.

The AF3YMV Kit consists of:

| Balloon | Part Number | Inlet Connection | Outlet Connection | Description  |
|---------|-------------|------------------|-------------------|--|
| A       |             |                  |                   | <b>Model UBY</b> - Combination Wye Strainer and Shut Off Valve with one Pressure / Temperature Port, Drain Valve, Tailpiece and Union End.   |
| B       |             |                  |                   | Connection Size for Coil/Terminal  |
| C       |             |                  |                   | <b>Model UA</b> - Union Accessory with one Pressure / Temperature Port, Manual Air Vent, Tailpiece and Union End.  |
| D       |             |                  |                   | Connection Size for Two-Way Temperature Control Valve (by others)  |
| E       |             |                  |                   | <b>Model AF</b> - Circuit Sentry™ Flo-Setter II - Externally Adjustable Balance and Commissioning Valve with Integral Isolation/Shut Off Capability, two Pressure/Temperature Ports, Tailpiece, and Union End. |
| F       |             |                  |                   | <b>Model MV</b> - Venturi/Ball Valve Combination - Calibrated Balance, Commissioning and Positive Shut Off Valve with two Pressure/Temperature Ports, Standard Port Ball Valve, Tailpiece and Union End.       |