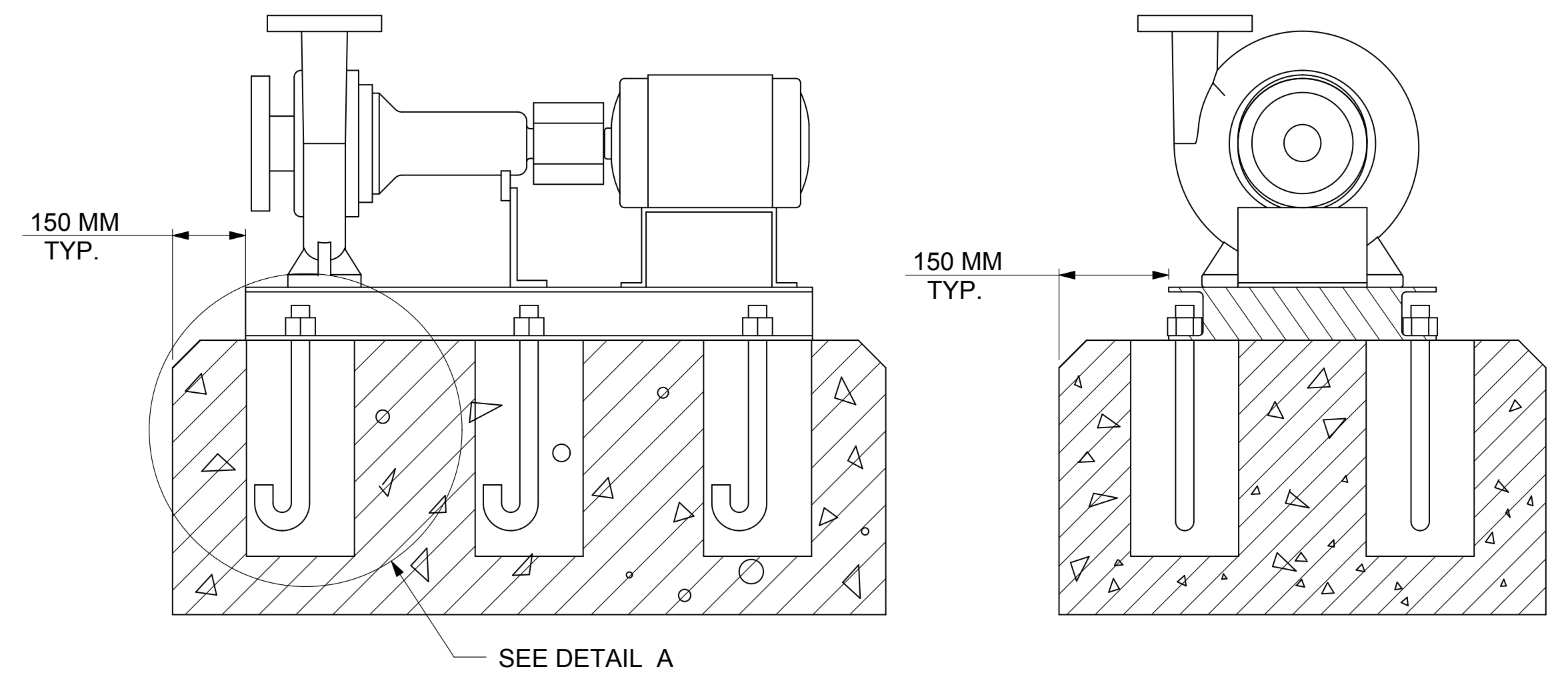


DIMENSIONS ARE SUBJECT TO CHANGE, NOT TO BE USED FOR CONSTRUCTION PURPOSES UNLESS CERTIFIED.

DIMENSIONS- Inches (mm)			STANDARD SEAL 1510, 1510-F														WEIGHT kg. APPROX	OPERATING WEIGHT kg. APPROX	
MOTOR FRAME	MOTOR KW	MOTOR RPM	HA	HB	HC MAX	HD	2HE	HF1	HF2	HH	HL	HM MAX	HO	HP	Y	Z	F		
90L	1.5	1450	14-5/8 (371)	31 (787)	34-1/4 (870)	12-3/4 (324)	12-7/8 (327)	25 (635)	---	3/4 (19)	5-3/4 (146)	16-5/8 (422)	21-1/4 (540)	3 (76)	6-1/32 (154)	6-1/4 (159)	5/8 (16)	187	233
100L	2.2	1450	14-5/8 (371)	31 (787)	36-1/4 (921)	12-3/4 (324)	12-7/8 (327)	25 (635)	---	3/4 (19)	5-3/4 (146)	18 (457)	21-1/4 (540)	3 (76)	6-1/32 (154)	6-1/4 (159)	5/8 (16)	204	255
112M	4	1450	14-5/8 (371)	31 (787)	37 (940)	12-3/4 (324)	12-7/8 (327)	25 (635)	---	3/4 (19)	5-3/4 (146)	18 (457)	21-1/4 (540)	3 (76)	6-1/32 (154)	6-1/4 (159)	5/8 (16)	214	267
160M	11, 15	2900	16 (406)	46-1/2 (1181)	49-1/8 (1248)	14 (356)	14 (356)	36-1/2 (927)	18-1/4 (464)	7/8 (22)	6-7/8 (175)	20-7/8 (530)	22-1/2 (572)	5 (127)	6-1/32 (154)	6-1/4 (159)	3/4 (19)	336	419
160L	18.5	2900	16 (406)	46-1/2 (1181)	50-7/8 (1292)	14 (356)	14 (356)	36-1/2 (927)	18-1/4 (464)	7/8 (22)	6-7/8 (175)	20-7/8 (530)	22-1/2 (572)	5 (127)	6-1/32 (154)	6-1/4 (159)	3/4 (19)	357	446
180M	22	2900	16 (406)	46-1/2 (1181)	50-1/4 (1276)	14 (356)	14 (356)	36-1/2 (927)	18-1/4 (464)	7/8 (22)	6-7/8 (175)	22 (559)	22-1/2 (572)	5 (127)	6-1/32 (154)	6-1/4 (159)	3/4 (19)	435	544
200L	30	2900	16 (406)	51-3/4 (1314)	55-3/8 (1407)	15 (381)	14 (356)	41-3/4 (1060)	20-7/8 (530)	7/8 (22)	6-7/8 (175)	23-1/8 (587)	23-1/2 (597)	5 (127)	6-1/32 (154)	6-1/4 (159)	3/4 (19)	550	687



DEVIATION FOR LINEAR DIMENSIONS ARE AS PER IS:2102 VERY COARSE CLASS.

	ABOVE	0.5	3	6	30	120	400	1000	2000
UP TO & INCLUDING		3	6	30	120	400	1000	2000	4000
VERY COARSE CLASS		± 0.5	± 1.0	± 1.5	± 2.5	± 4.0	± 6.0	± 8.0	

MAXIMUM WORKING PRESSURE 175 PSI (12 BAR)
FLANGE ARE 125# ANSI - STANDARD

FLANGE DIMENSIONS IN INCHES (MM)						
	SIZE	O.D.	THICKNESS	PCD	HOLE DIA.	NO OF HOLES
DISCHARGE	5	10.75 (273)	1.38 (35)	8.50 (216)	0.88 (22)	8
SUCTION	6	12.13 (308)	1.44 (37)	9.50 (241)	0.88 (22)	8

MAXIMUM WORKING PRESSURE 232 PSI (16 BAR)

FLANGE DIMENSIONS IN INCHES (MM)						
	SIZE	O.D.	THICKNESS	PCD	HOLE DIA.	NO OF HOLES
DISCHARGE	5	10.75 (273)	1.38 (35)	8.27 (210)	0.71 (18)	8
SUCTION	6	12.13 (308)	1.44 (37)	9.45 (240)	0.88 (22)	8

NOTE :

- 1) THE FOUNDATION TO BE MADE OF CONCRETE ON SOLID GROUND.
- 2) FOUNDATION BOLTS & PACKER PLATES TO BE GROUTED WITH QUICK SETTING NON-SHRINK GROUT ONLY.
- 3) RECOMMENDED MAKE : ACC "SHRINKKOMP" / FORSORC "CONBEXTRA-GP2" OR EQUIVALENT BALANCE HOLLOW PORTION OF BASEFRAME TO BE GROUTED WITH PORTLAND CEMENT, SAND & AGGREGATE IN PROPORTION OF 1:2:2 GRAVEL SIZE SHOULD BE < 18 TO 20 MM. AFTER FINAL GROUTING ALL SURFACE SHOULD BE FINISHED WITH FINE PLASTER.
- 4) THE FOUNDATION MUST BE ATLEAST 2.5 TIMES THE WEIGHT OF THE PUMP UNIT.
- 5) FOUNDATION DETAILS ARE FOR REFERENCE ONLY, SHOULD BE CONSTRUCTED BY CUSTOMER AS PER SITE REQUIREMENT ONLY.
- 6) PUMP SET IMAGE IS PROVIDED FOR DIMENSIONS REFERENCE ONLY AND IS NOT TO SCALE.

REVISION										TITLE										DWG NO.				THIRD ANGLE PROJECTION	
03										03	MAXIMUM WORKING PRESSURE DETAIL CHANGED	09/06/14	VP	DJ	KS	1510 5A MODEL				1510-5A		THIRD ANGLE PROJECTION			
05										02	FLANGE DETAIL ADDED	02/04/14	VP	DJ	KS										
04										01	FOUNDATION DETAILS ADDED	28/02/13	DJ	NP	KS										
04										00	16 BAR & GENERAL TOLERANCE DETAILS ADDED	12/03/15	VP	DJ	KS										
											ORIGINAL RELEASE	16/08/12	NP	DJ	KS										