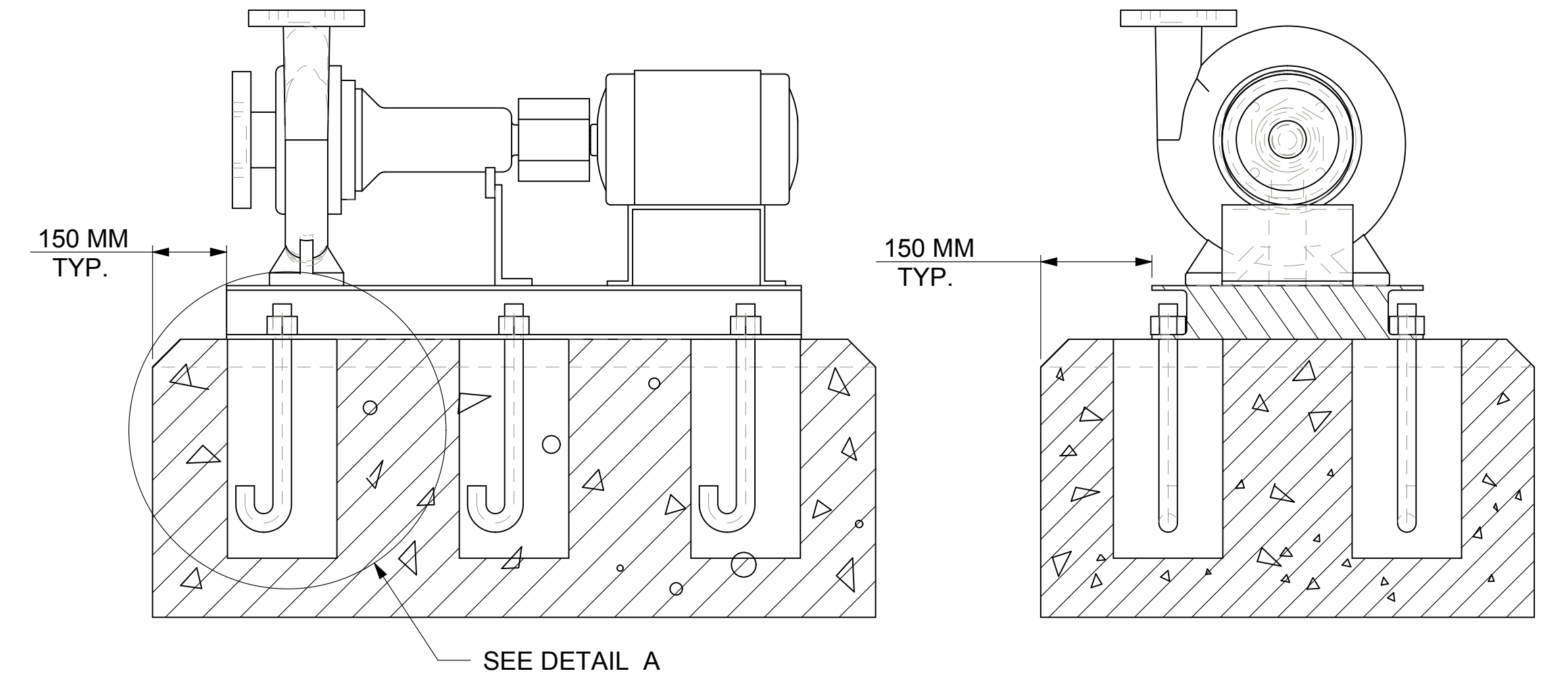


DIMENSIONS ARE SUBJECT TO CHANGE, NOT TO BE USED FOR CONSTRUCTION PURPOSES UNLESS CERTIFIED.

DIMENSIONS- Inches (mm)						STANDARD SEAL 1510, 1510-F														WEIGHT Kg. APPROX	OPERATING WEIGHT kg. APPROX
MOTOR FRAME	MOTOR KW	MOTOR RPM	HA	HB	HC MAX	HD	2HE	HF1	HF2	HH	HL	HM MAX	HO	HP	Y	Z					
112M	4	1450	16 (406)	46-1/2 (1181)	38-1/8 (968)	14 (356)	14 (356)	36-1/2 (927)	18-1/4 (464)	7/8 (22)	4-1/8 (105)	19-1/4 (489)	23-1/2 (597)	5 (127)	5-5/8 (143)	8 (203)	274	342			
132S	5.5	1450	16 (406)	46-1/2 (1181)	41-1/8 (1045)	14 (356)	14 (356)	36-1/2 (927)	18-1/4 (464)	7/8 (22)	4-1/8 (105)	19-7/8 (505)	23-1/2 (597)	5 (127)	5-5/8 (143)	8 (203)	309	386			
132M	7.5	1450	16 (406)	46-1/2 (1181)	42-5/8 (1083)	14 (356)	14 (356)	36-1/2 (927)	18-1/4 (464)	7/8 (22)	4-1/8 (105)	19-7/8 (505)	23-1/2 (597)	5 (127)	5-5/8 (143)	8 (203)	318	398			
160M	11	1450	16 (406)	46-1/2 (1181)	46-3/8 (1178)	14 (356)	14 (356)	36-1/2 (927)	18-1/4 (464)	7/8 (22)	4-1/8 (105)	20-7/8 (530)	23-1/2 (597)	5 (127)	5-5/8 (143)	8 (203)	376	470			
160L	15	1450	16 (406)	46-1/2 (1181)	48-1/8 (1222)	14 (356)	14 (356)	36-1/2 (927)	18-1/4 (464)	7/8 (22)	4-1/8 (105)	20-7/8 (530)	23-1/2 (597)	5 (127)	5-5/8 (143)	8 (203)	398	497			



DEVIATION FOR LINEAR DIMENSIONS ARE AS PER IS:2102 VERY COARSE CLASS.

	0.5	3	6	30	120	400	1000	2000
ABOVE								
UP TO & INCLUDING	3	6	30	120	400	1000	2000	4000
VERY COARSE CLASS	± 0.5	± 1.0	± 1.5	± 2.5	± 4.0	± 6.0	± 8.0	

MAXIMUM WORKING PRESSURE 175 PSI (12 BAR)
FLANGE ARE 125# ANSI - STANDARD

FLANGE DIMENSIONS IN INCHES (MM)						
	SIZE	O.D.	THICKNESS	PCD	HOLE DIA.	NO OF HOLES
DISCHARGE	3	8 (203)	1.13 (29)	6 (152)	0.75 (19)	4
SUCTION	4	9.50 (241)	1.25 (32)	7.5 (191)	0.75 (19)	8

MAXIMUM WORKING PRESSURE 232 PSI (16 BAR)

FLANGE DIMENSIONS IN INCHES (MM)						
	SIZE	O.D.	THICKNESS	PCD	HOLE DIA.	NO OF HOLES
DISCHARGE	3	8 (203)	1.12 (28)	6.3 (160)	0.71 (18)	8
SUCTION	4	9.50 (241)	1.25 (32)	7.09 (180)	0.71 (18)	8

- NOTE :
- 1) THE FOUNDATION TO BE MADE OF CONCRETE ON SOLID GROUND.
 - 2) FOUNDATION BOLTS & PACKER PLATES TO BE GROUTED WITH QUICK SETTING NON-SHRINK GROUT ONLY.
 - 3) RECOMMENDED MAKE : ACC "SHRINKKOMP" / FORSORC "CONBEXTRA-GP2" OR EQUIVALENT BALANCE HOLLOW PORTION OF BASEFRAME TO BE GROUTED WITH PORTLAND CEMENT, SAND & AGGREGATE IN PROPORTION OF 1:2:2 GRAVEL SIZE SHOULD BE < 18 TO 20 MM. AFTER FINAL GROUTING ALL SURFACE SHOULD BE FINISHED WITH FINE PLASTER.
 - 4) THE FOUNDATION MUST BE ATLEAST 2.5 TIMES THE WEIGHT OF THE PUMP UNIT.
 - 5) FOUNDATION DETAILS ARE FOR REFERENCE ONLY, SHOULD BE CONSTRUCTED BY CUSTOMER AS PER SITE REQUIREMENT ONLY.
 - 6) PUMP SET IMAGE IS PROVIDED FOR DIMENSIONS REFERENCE ONLY AND IS NOT TO SCALE.

REVISION										REVISION									
NO.	DATE	BY	CHKD.	APP.	NO.	DATE	BY	CHKD.	APP.	NO.	DATE	BY	CHKD.	APP.	NO.	DATE	BY	CHKD.	APP.
03					01					02					03				
05	13/12/16	VP	KS	KS	02	02/04/14	VP	DJ	KS	01	12/02/13	DJ	NP	KS	03	16/08/12	DJ	NP	KS
04	13/03/15	VP	DJ	KS	00	16/08/12	NP	DJ	KS	00									

TITLE										1510 3G MODEL										DWG NO.	
MAXIMUM WORKING PRESSURE DETAIL CHANGED										FLANGE DETAIL ADDED										1510-3G	
SUPPORT FOOT MOUNTING DIRECTION CHANGED										FOUNDATION DETAILS ADDED										1510-3G	
16 BAR & GENERAL TOLERANCE DETAILS ADDED										ORIGINAL RELEASE										1510-3G	
REVISION										REVISION										1510-3G	

THIRD ANGLE PROJECTION

THIS DRAWING AND THE INFORMATION DEPICTED THEREIN IS THE PROPERTY OF XYLEM. COPIES ARE ISSUED IN STRICT CONFIDENCE AND SHALL NOT BE REPRODUCED OR COPIED, OR USED AS THE BASIS FOR THE MANUFACTURE OR SALE OF PRODUCTS WITHOUT PRIOR WRITTEN PERMISSION OF XYLEM.

xylem Xylem Water Solutions India Private Limited
Plot No. 731, GIDC Savli, Manjusr, Savli Road, Vasodara-381 770, Gujarat, India.
Tel : +91 2667 265800.