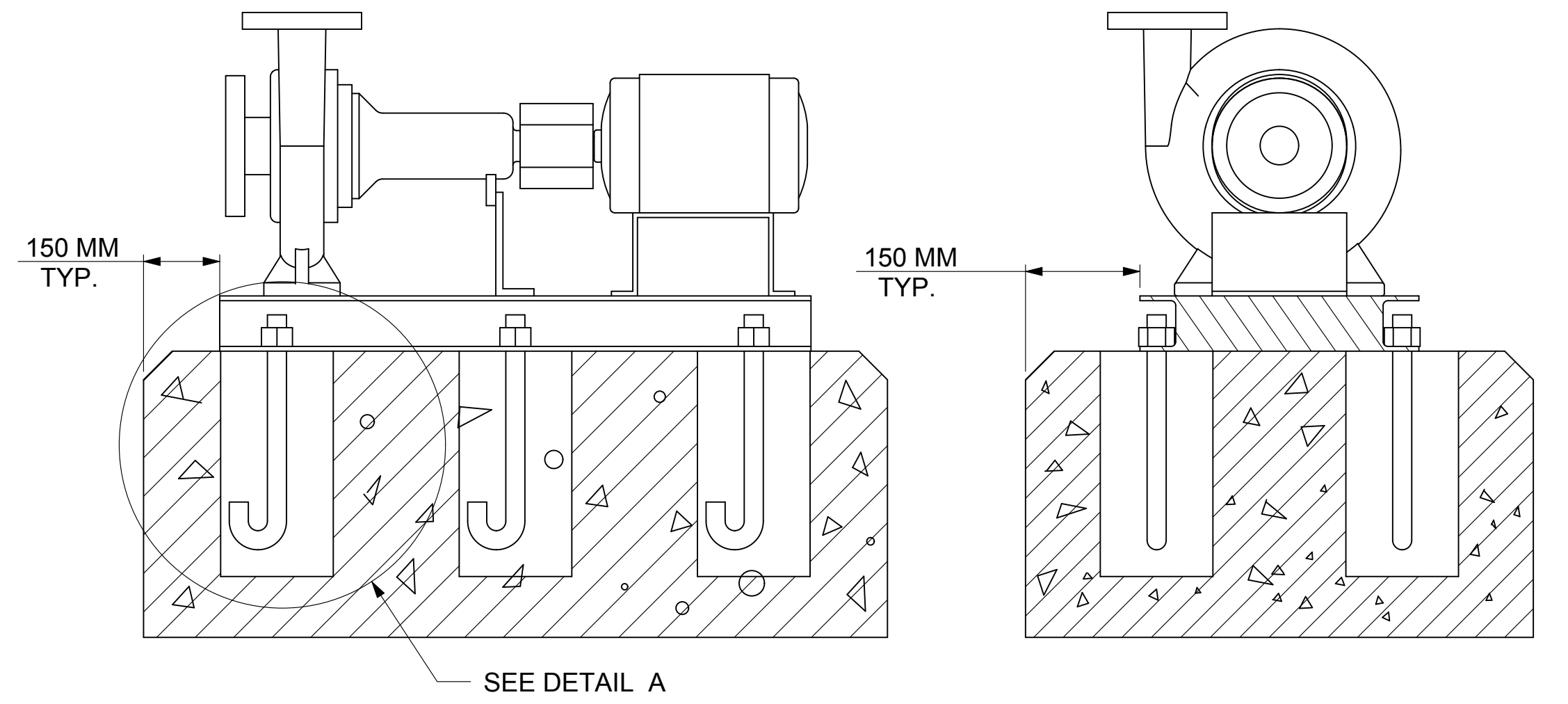


DIMENSIONS ARE SUBJECT TO CHANGE, NOT TO BE USED FOR CONSTRUCTION PURPOSES UNLESS CERTIFIED.

DIMENSIONS- Inches (mm)			STANDARD SEAL 1510, 1510-F														WEIGHT Kg. APPROX	OPERATING WEIGHT kg. APPROX
MOTOR FRAME	MOTOR KW	MOTOR RPM	HA	HB	HC MAX	HD	2HE	HF1	HF2	HH	HL	HM MAX	HO	HP	Y	Z		
100	2.2	1450	16 (406)	46-1/2 (1181)	37-3/8 (949)	14 (356)	14 (356)	36-1/2 (927)	18-1/4 (464)	7/8 (22)	3-7/8 (98)	18-1/2 (470)	23 (584)	5 (127)	5-1/2 (140)	7-1/4 (184)	272	340
112M	4	1450	16 (406)	46-1/2 (1181)	38-3/8 (975)	14 (356)	14 (356)	36-1/2 (927)	18-1/4 (464)	7/8 (22)	3-7/8 (98)	18-3/4 (476)	23 (584)	5 (127)	5-1/2 (140)	7-1/4 (184)	282	352
132S	5.5	1450	16 (406)	46-1/2 (1181)	41-3/8 (1051)	14 (356)	14 (356)	36-1/2 (927)	18-1/4 (464)	7/8 (22)	3-7/8 (98)	19-7/8 (505)	23 (584)	5 (127)	5-1/2 (140)	7-1/4 (184)	303	379
132M	7.5	1450	16 (406)	46-1/2 (1181)	42-7/8 (1089)	14 (356)	14 (356)	36-1/2 (927)	18-1/4 (464)	7/8 (22)	3-7/8 (98)	19-7/8 (505)	23 (584)	5 (127)	5-1/2 (140)	7-1/4 (184)	313	391
160M	11	1450	16 (406)	46-1/2 (1181)	46-5/8 (1184)	14 (356)	14 (356)	36-1/2 (927)	18-1/4 (464)	7/8 (22)	3-7/8 (98)	20-7/8 (530)	23 (584)	5 (127)	5-1/2 (140)	7-1/4 (184)	371	464



DEVIATION FOR LINEAR DIMENSIONS ARE AS PER IS:2102 VERY COARSE CLASS.

	ABOVE	0.5	3	6	30	120	400	1000	2000
UP TO & INCLUDING	3	6	30	120	400	1000	2000	4000	
VERY COARSE CLASS	—	± 0.5	± 1.0	± 1.5	± 2.5	± 4.0	± 6.0	± 8.0	

MAXIMUM WORKING PRESSURE 175 PSI (12 BAR)
FLANGE ARE 125# ANSI - STANDARD

FLANGE DIMENSIONS IN INCHES (MM)						
	SIZE	O.D.	THICKNESS	PCD	HOLE DIA.	NO OF HOLES
DISCHARGE	2	6.25 (159)	0.88 (22)	4.75 (121)	0.75 (19)	4
SUCTION	3	8 (203)	1.13 (29)	6 (152)	0.75 (19)	4

MAXIMUM WORKING PRESSURE 232 PSI (16 BAR)

FLANGE DIMENSIONS IN INCHES (MM)						
	SIZE	O.D.	THICKNESS	PCD	HOLE DIA.	NO OF HOLES
DISCHARGE	2	6.25 (159)	0.88 (22)	4.92 (125)	0.71 (18)	4
SUCTION	3	8 (203)	1.12 (28)	6.3 (160)	0.71 (18)	8

- NOTE :
- 1) THE FOUNDATION TO BE MADE OF CONCRETE ON SOLID GROUND.
 - 2) FOUNDATION BOLTS & PACKER PLATES TO BE GROUTED WITH QUICK SETTING NON-SHRINK GROUT ONLY.
 - 3) RECOMMENDED MAKE : ACC "SHRINKKOMP" / FORSORC "CONBEXTRA-GP2" OR EQUIVALENT BALANCE HOLLOW PORTION OF BASEFRAME TO BE GROUTED WITH PORTLAND CEMENT, SAND & AGGREGATE IN PROPORTION OF 1:2:2 GRAVEL SIZE SHOULD BE < 18 TO 20 MM. AFTER FINAL GROUTING ALL SURFACE SHOULD BE FINISHED WITH FINE PLASTER.
 - 4) THE FOUNDATION MUST BE ATLEAST 2.5 TIMES THE WEIGHT OF THE PUMP UNIT.
 - 5) FOUNDATION DETAILS ARE FOR REFERENCE ONLY, SHOULD BE CONSTRUCTED BY CUSTOMER AS PER SITE REQUIREMENT ONLY.
 - 6) PUMP SET IMAGE IS PROVIDED FOR DIMENSIONS REFERENCE ONLY AND IS NOT TO SCALE.

REV	DATE	BY	CHKD	APP	REV	DATE	BY	CHKD	APP										
03					03	MAXIMUM WORKING PRESSURE DETAIL CHANGED	09/06/14	VP	DJ	KS									
05					02	FLANGE DETAIL ADDED	02/04/14	VP	DJ	KS									
04					01	FOUNDATION DETAILS ADDED	12/02/13	DJ	NP	KS									
					00	ORIGINAL RELEASE	16/08/12	NP	DJ	KS									

1510 2G MODEL										DWG NO. 1510-2G		THIRD ANGLE PROJECTION		
DWN	DATE	CHKD	DATE	SCALE	TOLERANCES UNLESS OTHERWISE SPECIFIED:					XYLEM		Xylem Water Solutions India Private Limited Plot No. 731, GIDC Savli, Manjusr, Savli Road, Vasodara-391 770, Gujarat, India. Tel : +91 2667 265800.		
NP	16/08/12	DJ	16/08/12	NTS	XXX	XXX	XXX	XXX	ANGLE	FRAC				