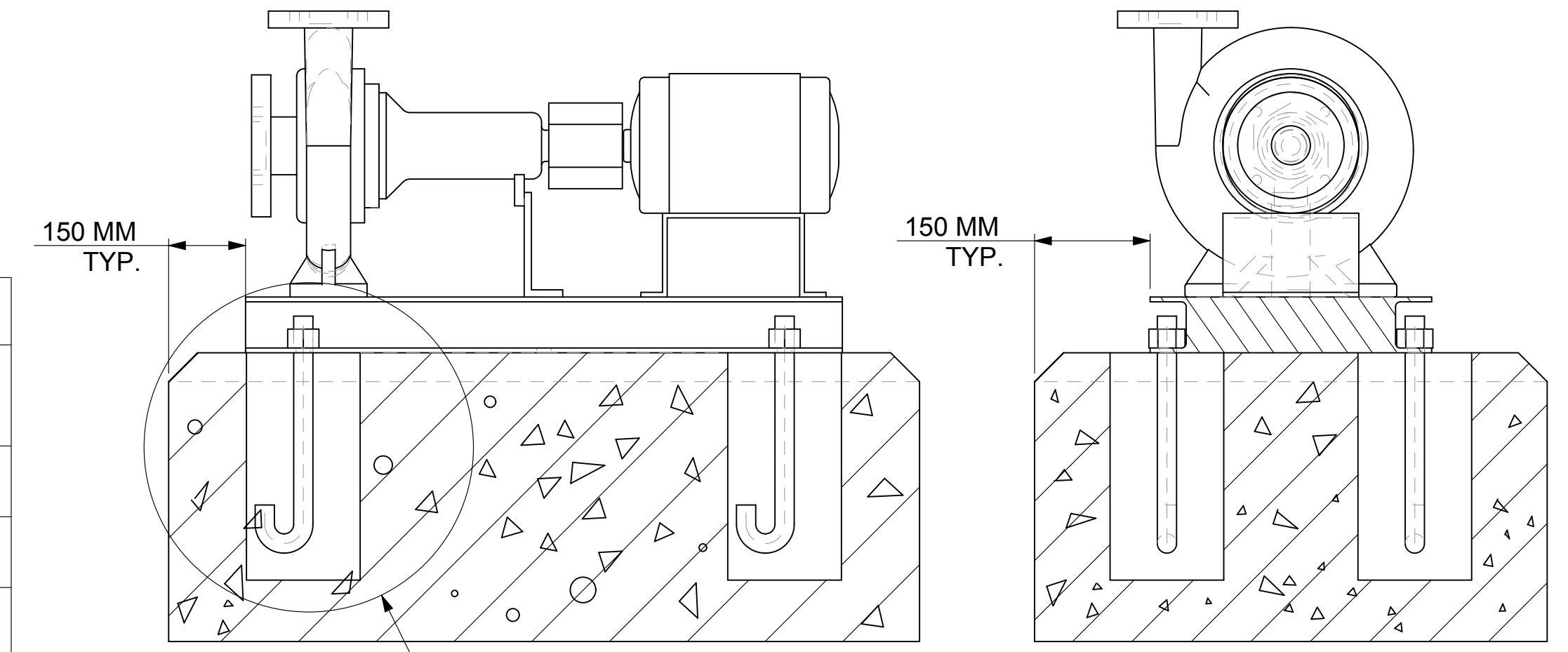


DIMENSIONS ARE SUBJECT TO CHANGE, NOT TO BE USED FOR CONSTRUCTION PURPOSES UNLESS CERTIFIED.

DIMENSIONS- Inches (mm)						STANDARD SEAL 1510, 1510-F											WEIGHT kg. APPROX	OPERATING WEIGHT kg. APPROX
MOTOR FRAME	MOTOR KW	MOTOR RPM	HA	HB	HC MAX	HD	2HE	HF1	HF2	HH	HL	HM MAX	HO	HP	Y	Z		
71	0.37	1450	12 (305)	28-3/4 (730)	27-1/2 (696)	9-3/4 (248)	10-1/4 (260)	22-1/2 (572)	---	3/4 (19)	3-9/16 (90)	12-3/4 (324)	16-1/4 (413)	3 (76)	3-1/2 (89)	4-3/4 (121)	81	102
80	0.55 0.75	1450	12 (305)	28-3/4 (730)	28-7/8 (733)	9-3/4 (248)	10-1/4 (260)	22-1/2 (572)	---	3/4 (19)	3-9/16 (90)	13-3/8 (340)	16-1/4 (413)	3 (76)	3-1/2 (89)	4-3/4 (121)	87	109
90S	1.1	1450	12 (305)	28-3/4 (730)	29 (737)	9-3/4 (248)	10-1/4 (260)	22-1/2 (572)	---	3/4 (19)	3-9/16 (90)	13-1/2 (343)	16-1/4 (413)	3 (76)	3-1/2 (89)	4-3/4 (121)	101	127
90L	2.2	2900	12 (305)	28-3/4 (730)	30 (762)	9-3/4 (248)	10-1/4 (260)	22-1/2 (572)	---	3/4 (19)	3-9/16 (90)	13-1/2 (343)	16-1/4 (413)	3 (76)	3-1/2 (89)	4-3/4 (121)	105	131
112M	4	2900	14-5/8 (371)	31 (787)	32-5/8 (829)	9-3/4 (248)	12-7/8 (327)	25 (635)	---	3/4 (19)	2-3/16 (56)	15 (381)	16-1/4 (413)	3 (76)	3-1/2 (89)	4-3/4 (121)	122	153
132S	5.5, 7.5	2900	14-5/8 (371)	34-5/8 (879)	36 (914)	10-3/4 (273)	12-7/8 (327)	28-5/8 (727)	---	3/4 (19)	2-3/16 (56)	15-5/8 (397)	17-1/4 (438)	3 (76)	3-1/2 (89)	4-3/4 (121)	181	226



- NOTE :
- 1) THE FOUNDATION TO BE MADE OF CONCRETE ON SOLID GROUND.
 - 2) FOUNDATION BOLTS & PACKER PLATES TO BE GROUTED WITH QUICK SETTING NON-SHRINK GROUT ONLY.
 - 3) RECOMMENDED MAKE : ACC "SHRINKKOMP" / FORSORC "CONBEXTRA-GP2" OR EQUIVALENT BALANCE HOLLOW PORTION OF BASEFRAME TO BE GROUTED WITH PORTLAND CEMENT, SAND & AGGREGATE IN PROPORTION OF 1:2:2 GRAVEL SIZE SHOULD BE < 18 TO 20 MM. AFTER FINAL GROUTING ALL SURFACE SHOULD BE FINISHED WITH FINE PLASTER.
 - 4) THE FOUNDATION MUST BE ATLEAST 2.5 TIMES THE WEIGHT OF THE PUMP UNIT.
 - 5) FOUNDATION DETAILS ARE FOR REFERENCE ONLY, SHOULD BE CONSTRUCTED BY CUSTOMER AS PER SITE REQUIREMENT ONLY.
 - 6) PUMP SET IMAGE IS PROVIDED FOR DIMENSIONS REFERENCE ONLY AND IS NOT TO SCALE.

MAXIMUM WORKING PRESSURE 175 PSI (12 BAR)
FLANGE ARE 125# ANSI - STANDARD

FLANGE DIMENSIONS IN INCHES (MM)						
	SIZE	O.D.	THICKNESS	PCD	HOLE DIA.	NO OF HOLES
DISCHARGE	2	6 (152)	0.63 (16)	4.75 (121)	0.75 (19)	4
SUCTION	2 1/2	7.13 (181)	0.69 (17)	5.50 (140)	0.75 (19)	4

DEVIATION FOR LINEAR DIMENSIONS ARE AS PER IS:2102 VERY COARSE CLASS.

	ABOVE	0.5	3	6	30	120	400	1000	2000
UP TO & INCLUDING	3	6	30	120	400	1000	2000	4000	
VERY COARSE CLASS	—	± 0.5	± 1.0	± 1.5	± 2.5	± 4.0	± 6.0	± 8.0	

REVISION	DATE	BY	CHKD.	APP.	REVISION	DATE	BY	CHKD.	APP.
03	13/03/15	VP	DJ	KS	GENERAL TOLERANCE DETAILS ADDED	13/03/15	VP	DJ	KS
02	21/02/14	VP	DJ	KS	MOTOR FRAME SIZE CORRECTED AND FLANGE DETAIL ADDED	21/02/14	VP	DJ	KS
01	08/02/14	VP	DJ	KS	FOUNDATION DETAILS ADDED	08/02/14	VP	DJ	KS
04	12/12/16	VP	KS	KS	SUPPORT FOOT MOUNTING DIRECTION CHANGED	12/12/16	VP	KS	KS
					ORIGINAL RELEASE	14/08/12	NP	DJ	KS

1510-2AC

DWG NO. 1510-2AC

THIRD ANGLE PROJECTION

Xylem Water Solutions India Private Limited
Plot No. 731, GIDC Savli, Manjara, Savli Road,
Vandrapura-381 770, Gujarat, India.
Tel : +91 2667 265800.