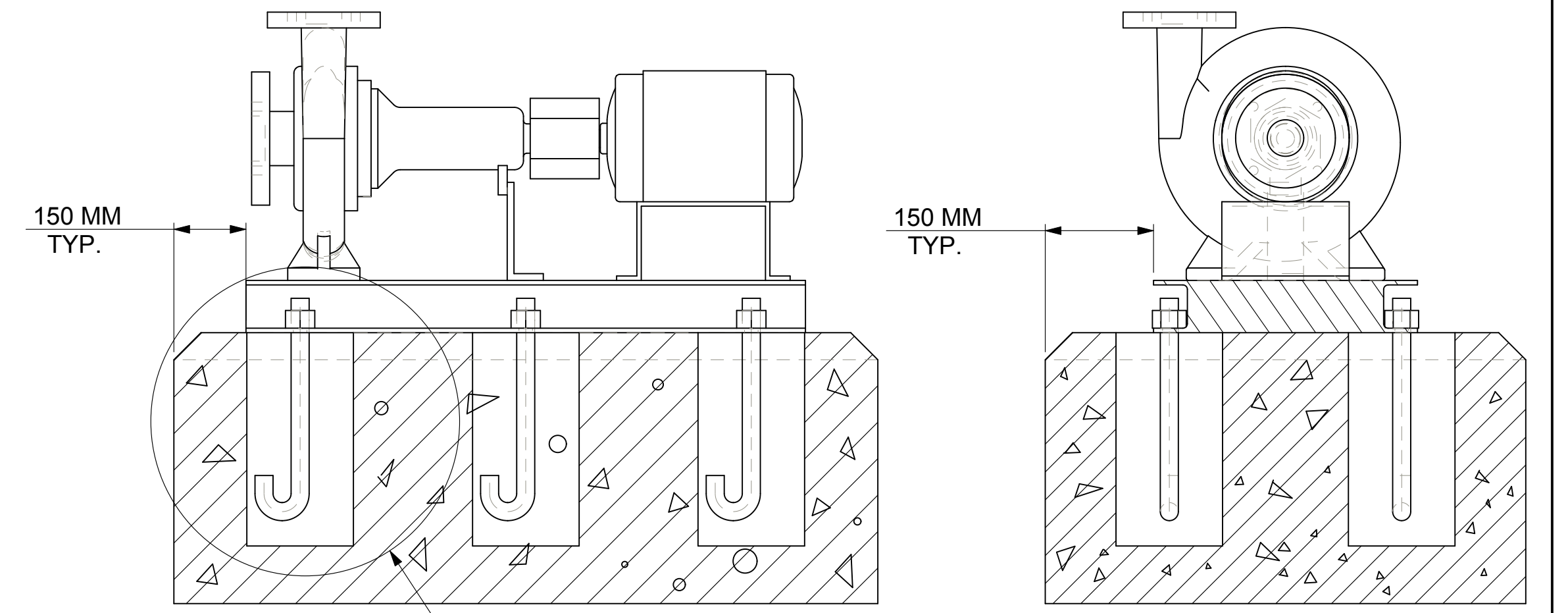


DIMENSIONS ARE SUBJECT TO CHANGE, NOT TO BE USED FOR CONSTRUCTION PURPOSES UNLESS CERTIFIED.

DIMENSIONS- Inches (mm)			STANDARD SEAL 1510, 1510-F																	WEIGHT Kg. APPROX	OPERATING WEIGHT kg. APPROX
MOTOR FRAME	MOTOR KW	MOTOR RPM	HA	HB	HC MAX	HD	2HE	HF1	HF2	HH	HL	HM MAX	HO	HP	Y	Z	F				
80	0.75	1450	14-5/8 (371)	31 (787)	30-5/8 (778)	10-3/4 (273)	12-7/8 (327)	25 (635)	----	3/4 (19)	2-3/4 (70)	14-1/4 (362)	17-1/2 (445)	3 (76)	4 (102)	6 (152)	5/8 (16)	125	157		
90S	1.1	1450	14-5/8 (371)	31 (787)	32-1/4 (819)	10-3/4 (273)	12-7/8 (327)	25 (635)	----	3/4 (19)	2-3/4 (70)	14-1/2 (368)	17-1/2 (445)	3 (76)	4 (102)	6 (152)	5/8 (16)	131	164		
90L	1.5	1450	14-5/8 (371)	31 (787)	32-1/4 (819)	10-3/4 (273)	12-7/8 (327)	25 (635)	----	3/4 (19)	2-3/4 (70)	14-1/2 (368)	17-1/2 (445)	3 (76)	4 (102)	6 (152)	5/8 (16)	135	169		
100L	2.2	1450	14-5/8 (371)	34-5/8 (879)	33-1/4 (845)	10-3/4 (273)	12-7/8 (327)	28-5/8 (727)	----	3/4 (19)	2-3/4 (70)	16 (406)	17-1/2 (445)	3 (76)	4 (102)	6 (152)	5/8 (16)	152	190		
112M	4	1450	14-5/8 (371)	31 (787)	34 (864)	10-3/4 (273)	12-7/8 (327)	25 (635)	----	3/4 (19)	2-3/4 (70)	16 (406)	17-1/2 (445)	3 (76)	4 (102)	6 (152)	5/8 (16)	162	202		
132S	5.5	1450	14-5/8 (371)	34-5/8 (879)	36-1/2 (927)	10-3/4 (273)	12-7/8 (327)	28-5/8 (727)	----	3/4 (19)	2-3/4 (70)	16-5/8 (422)	17-1/2 (445)	3 (76)	4 (102)	6 (152)	5/8 (16)	214	267		
132S	7.5	2900	14-5/8 (371)	34-5/8 (879)	36-1/2 (927)	10-3/4 (273)	12-7/8 (327)	28-5/8 (727)	----	3/4 (19)	2-3/4 (70)	16-5/8 (422)	17-1/2 (445)	3 (76)	4 (102)	6 (152)	5/8 (16)	214	267		
160M	11, 15	2900	16 (406)	46-1/2 (1181)	46-1/8 (1172)	13 (330)	14 (356)	36-1/2 (927)	18-1/4 (464)	7/8 (22)	3-7/8 (98)	18-7/8 (479)	19-3/4 (502)	5 (127)	4 (102)	6 (152)	3/4 (19)	289	362		
160L	18.5	2900	16 (406)	46-1/2 (1181)	47-7/8 (1216)	13 (330)	14 (356)	36-1/2 (927)	18-1/4 (464)	7/8 (22)	3-7/8 (98)	18-7/8 (479)	19-3/4 (502)	5 (127)	4 (102)	6 (152)	3/4 (19)	311	389		
180M	22	2900	16 (406)	46-1/2 (1181)	47-1/4 (1200)	14 (356)	14 (356)	36-1/2 (927)	18-1/4 (464)	7/8 (22)	3-7/8 (98)	21 (533)	20-3/4 (527)	5 (127)	4 (102)	6 (152)	3/4 (19)	394	493		
200L	30	2900	24 (610)	56 (1422)	54-1/4 (1375)	14-1/2 (368)	21-1/2 (546)	44 (1118)	22 (559)	1 (25)	4-1/2 (114)	23-1/4 (590)	21-1/4 (540)	6 (152)	4 (102)	6 (152)	7/8 (22)	509	636		



- NOTE :
- 1) THE FOUNDATION TO BE MADE OF CONCRETE ON SOLID GROUND.
 - 2) FOUNDATION BOLTS & PACKER PLATES TO BE GROUTED WITH QUICK SETTING NON-SHRINK GROUT ONLY.
 - 3) RECOMMENDED MAKE : ACC "SHRINKOMP" / FORSORC "CONBEXTRA-GP2" OR EQUIVALENT BALANCE HOLLOW PORTION OF BASEFRAME TO BE GROUTED WITH PORTLAND CEMENT, SAND & AGGREGATE IN PROPORTION OF 1:2:2 GRAVEL SIZE SHOULD BE < 18 TO 20 MM. AFTER FINAL GROUTING ALL SURFACE SHOULD BE FINISHED WITH FINE PLASTER.
 - 4) THE FOUNDATION MUST BE ATLEAST 2.5 TIMES THE WEIGHT OF THE PUMP UNIT.
 - 5) FOUNDATION DETAILS ARE FOR REFERENCE ONLY, SHOULD BE CONSTRUCTED BY CUSTOMER AS PER SITE REQUIREMENT ONLY.
 - 6) PUMP SET IMAGE IS PROVIDED FOR DIMENSIONS REFERENCE ONLY AND IS NOT TO SCALE.

DEVIATION FOR LINEAR DIMENSIONS ARE AS PER IS:2102 VERY COARSE CLASS.

ABOVE UP TO & INCLUDING	0.5	3	6	30	120	400	1000	2000
UP TO & INCLUDING	3	6	30	120	400	1000	2000	4000
VERY COARSE CLASS	± 0.5	± 1.0	± 1.5	± 2.5	± 4.0	± 6.0	± 8.0	

MAXIMUM WORKING PRESSURE 175 PSI (12 BAR)
FLANGE ARE 125# ANSI - STANDARD

FLANGE DIMENSIONS IN INCHES (MM)						
	SIZE	O.D.	THICKNESS	PCD	HOLE DIA.	NO OF HOLES
DISCHARGE	2-1/2	7 (178)	0.69 (17)	5.5 (140)	0.75 (19)	4
SUCTION	3	7.63 (194)	0.75 (19)	6 (152)	0.75 (19)	4

REVISION		DATE	BY	CHKD.	APP.	REVISION	DATE	BY	CHKD.	APP.
03	DETAIL ADDED FOR 200L FRAME SIZE	22/08/14	VP	DJ	KS					
02	FLANGE DETAIL ADDED	02/04/14	VP	DJ	KS					
01	FOUNDATION DETAILS ADDED	28/02/13	DJ	NP	KS					
04	GENERAL TOLERANCE DETAILS ADDED	13/03/15	VP	DJ	KS					
00	ORIGINAL RELEASE	16/08/12	NP	DJ	KS					

TITLE: 1510 2-1/2BB MODEL
DWG NO.: 1510-2-1/2BB

THIS DRAWING AND THE INFORMATION DEPICTED THEREIN IS THE PROPERTY OF XYLEM. COPIES ARE ISSUED IN STRICT CONFIDENCE AND SHALL NOT BE REPRODUCED OR COPIED, OR USED AS THE BASIS FOR THE MANUFACTURE OR SALE OF PRODUCTS WITHOUT PRIOR WRITTEN PERMISSION OF XYLEM.

Xylem Water Solutions India Private Limited
Plot No. 731, GIDC Savli, Manjusr, Savli Road, Vadodra-391 770, Gujarat, India.
Tel : +91 2667 265800.