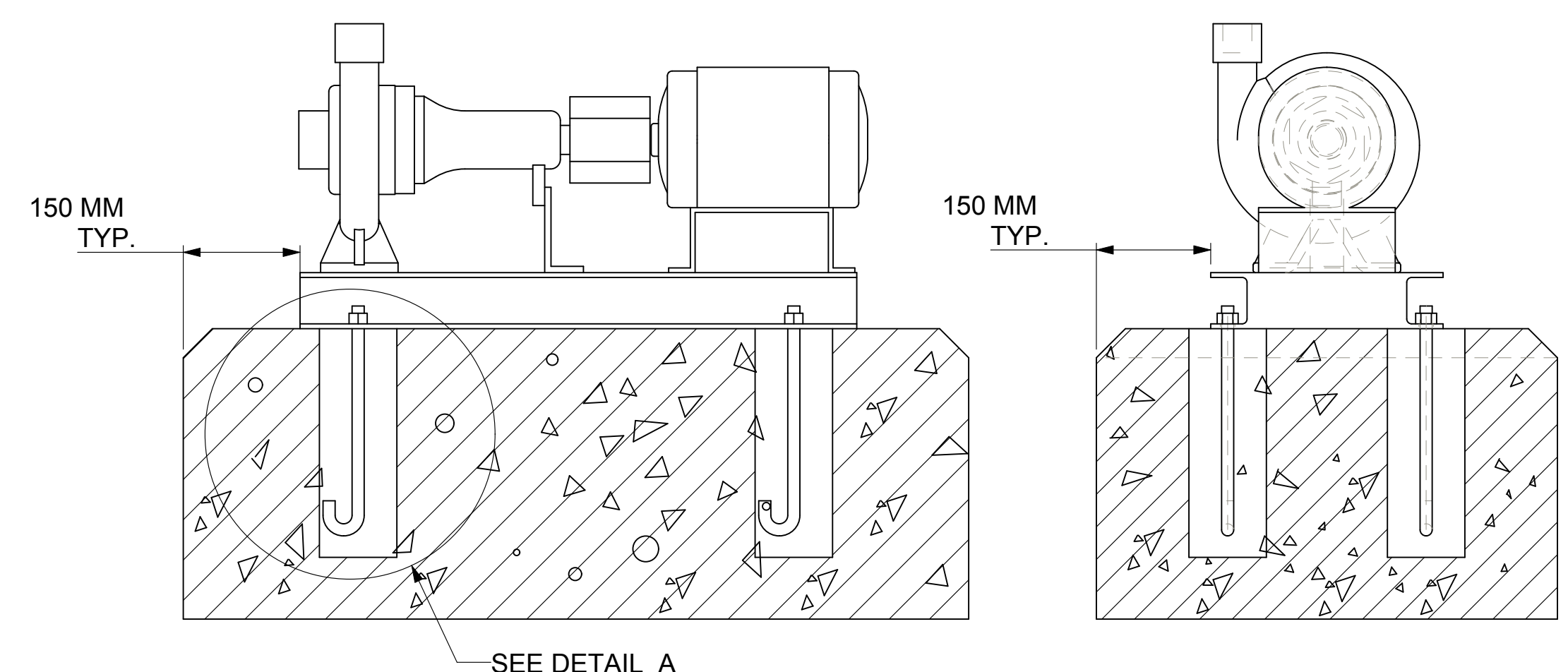


DIMENSIONS ARE SUBJECT TO CHANGE, NOT TO BE USED FOR CONSTRUCTION PURPOSES UNLESS CERTIFIED.

DIMENSIONS- Inches (mm)			STANDARD SEAL 1510, 1510-F													WEIGHT Kg. APPROX	OPERATING WEIGHT kg. APPROX
MOTOR FRAME	MOTOR KW	MOTOR RPM	HA	HB	HC MAX	HD	2HE	HF1	HH	HL	HM MAX	HO	HP	Y	Z		
71	0.37	1450	12 (305)	28-3/4 (730)	26-15/16 (681)	9-3/4 (248)	10-1/4 (260)	22-1/2 (572)	3/4 (19)	3-1/16 (78)	12-3/4 (324)	15-3/4 (400)	3 (76)	3-1/8 (79)	4-5/8 (117)	71	88
80	0.55, 0.75	1450	12 (305)	28-3/4 (730)	28-1/4 (718)	9-3/4 (248)	10-1/4 (260)	22-1/2 (572)	3/4 (19)	3-1/16 (78)	13-3/8 (340)	15-3/4 (400)	3 (76)	3-1/8 (79)	4-5/8 (117)	79	99
90S	1.1	1450	12 (305)	28-3/4 (730)	28-3/8 (721)	9-3/4 (248)	10-1/4 (260)	22-1/2 (572)	3/4 (19)	3-1/16 (78)	13-1/2 (343)	15-3/4 (400)	3 (76)	3-1/8 (79)	4-5/8 (117)	96	120
90L	2.2	2900	12 (305)	28-3/4 (730)	29-3/8 (746)	9-3/4 (248)	10-1/4 (260)	22-1/2 (572)	3/4 (19)	3-1/16 (78)	13-1/2 (343)	15-3/4 (400)	3 (76)	3-1/8 (79)	4-5/8 (117)	100	124
112M	4	2900	14-5/8 (371)	31 (787)	32-1/8 (816)	9-3/4 (248)	12-7/8 (327)	25 (635)	3/4 (19)	1-11/16 (43)	15 (381)	15-3/4 (400)	3 (76)	3-1/8 (79)	4-5/8 (117)	117	146
132S	5.5, 7.5	2900	14-5/8 (371)	34-5/8 (879)	35-3/8 (899)	9-3/4 (248)	12-7/8 (327)	28-5/8 (727)	3/4 (19)	1-11/16 (43)	15-5/8 (397)	15-3/4 (400)	3 (76)	3-1/8 (79)	4-5/8 (117)	175	219



- NOTE :
- 1) THE FOUNDATION TO BE MADE OF CONCRETE ON SOLID GROUND.
 - 2) FOUNDATION BOLTS & PACKER PLATES TO BE GROUTED WITH QUICK SETTING NON-SHRINK GROUT ONLY.
 - 3) RECOMMENDED MAKE : ACC "SHRINKKOMP" / FORSORC "CONBEXTRA-GP2" OR EQUIVALENT BALANCE HOLLOW PORTION OF BASEFRAME TO BE GROUTED WITH PORTLAND CEMENT, SAND & AGGREGATE IN PROPORTION OF 1:2:2 GRAVEL SIZE SHOULD BE < 18 TO 20 MM. AFTER FINAL GROUTING ALL SURFACE SHOULD BE FINISHED WITH FINE PLASTER.
 - 4) THE FOUNDATION MUST BE ATLEAST 2.5 TIMES THE WEIGHT OF THE PUMP UNIT.
 - 5) FOUNDATION DETAILS ARE FOR REFERENCE ONLY, SHOULD BE CONSTRUCTED BY CUSTOMER AS PER SITE REQUIREMENT ONLY.
 - 6) PUMP SET IMAGE IS PROVIDED FOR DIMENSIONS REFERENCE ONLY AND IS NOT TO SCALE.

DEVIATION FOR LINEAR DIMENSIONS ARE AS PER IS:2102 VERY COARSE CLASS.

ABOVE UP TO & INCLUDING	0.5	3	6	30	120	400	1000	2000
UP TO & INCLUDING	3	6	30	120	400	1000	2000	4000
VERY COARSE CLASS	± 0.5	± 1.0	± 1.5	± 2.5	± 4.0	± 6.0	± 8.0	

MAXIMUM WORKING PRESSURE 175 PSI (12 BAR)

NOZZLE SIZES	
	SIZE
DISCHARGE	1-1/2" NPT
SUCTION	2" NPT

REVISION	DATE	BY	CHKD.	APP.	REVISION	DATE	BY	CHKD.	APP.
03	13/03/15	VP	DJ	KS	GENERAL TOLERANCE DETAILS ADDED	13/03/15	VP	DJ	KS
02	21/02/14	VP	DJ	KS	MOTOR FRAME SIZE CORRECTED	21/02/14	VP	DJ	KS
01	28/03/13	NP	DJ	KS	FOUNDATION DETAILS ADDED	28/03/13	NP	DJ	KS
04	14/08/12	NP	DJ	KS	SUPPORT FOOT MOUNTING DIRECTION CHANGED	12/12/16	VP	KS	KS
00	14/08/12	NP	DJ	KS	ORIGINAL RELEASE	14/08/12	NP	DJ	KS

TITLE: 1510 1-1/2AC PUMP					DWG NO.: 1510-1-1/2AC					
MATERIAL: ---					SCALE: NTS					
DWN	DATE	CKD	DATE	SCALE	TOLERANCES UNLESS OTHERWISE SPECIFIED:					
NP	14/08/12	DJ	14/08/12	NTS	XXXE	XXXE	XXXE	XXXE	ANGLE ±	FRAC ±

THIS DRAWING AND THE INFORMATION DEPICTED THEREIN IS THE PROPERTY OF XYLEM. COPIES ARE ISSUED IN STRICT CONFIDENCE AND SHALL NOT BE REPRODUCED OR COPIED, OR USED AS THE BASIS FOR THE MANUFACTURE OR SALE OF PRODUCTS WITHOUT PRIOR WRITTEN PERMISSION OF XYLEM.

xylem Xylem Water Solutions India Private Limited
Plot No. 731, GIDC Savli, Manjusr, Savli Road, Vadodra-391 770, Gujarat, India.
Tel: +91 2667 265800.