

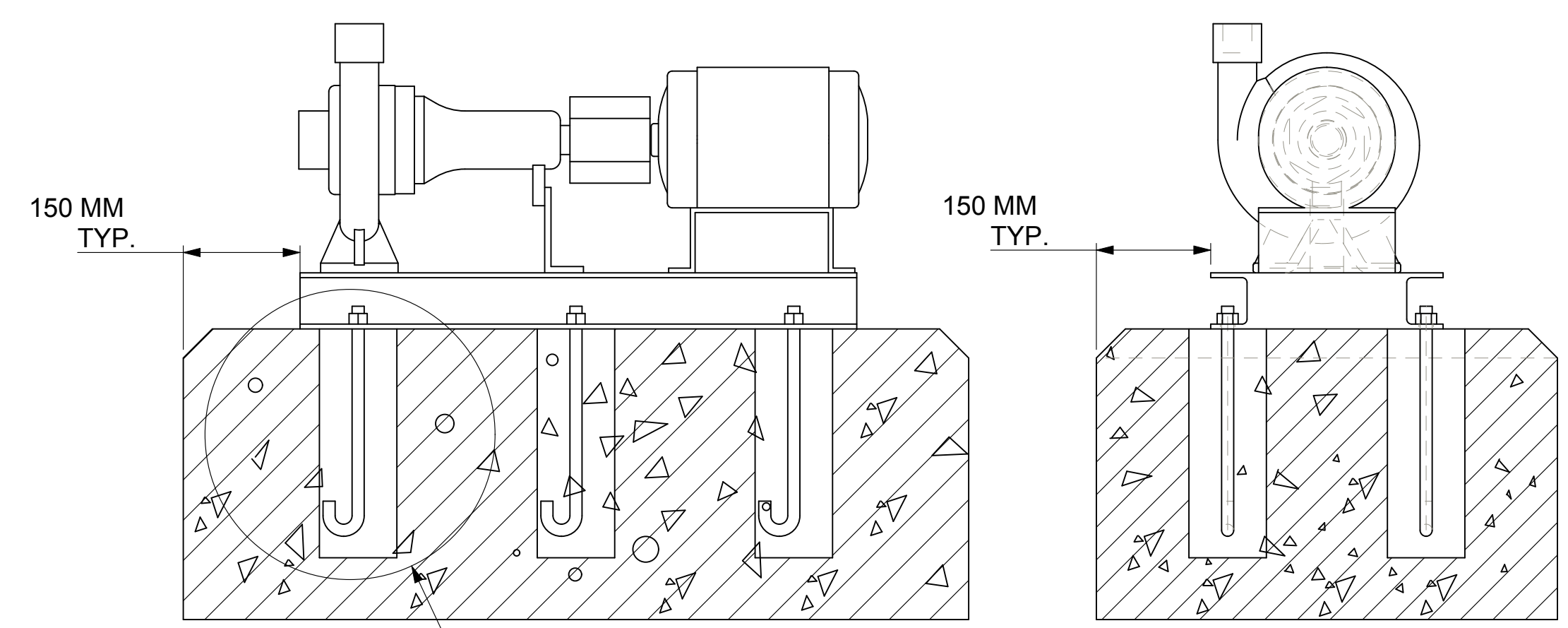
DIMENSIONS ARE SUBJECT TO CHANGE, NOT TO BE USED FOR CONSTRUCTION PURPOSES UNLESS CERTIFIED.

DIMENSIONS- Inches (mm)			STANDARD SEAL 1510, 1510-F															WEIGHT kg. APPROX	OPERATING WEIGHT kg. APPROX
MOTOR FRAME	MOTOR KW	MOTOR RPM	HA	HB	HC MAX	HD	2HE	HF1	HF2	HH	HL	HM MAX	HO	HP	Y	Z	F		
71	0.37	1450	14-5/8 (371)	31 (787)	25-1/2 (649)	10-3/4 (273)	12-7/8 (327)	25 (635)	---	3/4 (19)	1-13/16 (46)	13-5/7 (346)	18-3/4 (476)	3 (76)	3-1/4 (83)	5-1/2 (140)	5/8 (16)	84	105
80	0.55 0.75	1450	14-5/8 (371)	31 (787)	27 (686)	10-3/4 (273)	12-7/8 (327)	25 (635)	---	3/4 (19)	1-13/16 (46)	14-1/4 (362)	18-3/4 (476)	3 (76)	3-1/4 (83)	5-1/2 (140)	5/8 (16)	93	116
90S	1.1	1450	14-5/8 (371)	31 (787)	28-5/8 (727)	10-3/4 (273)	12-7/8 (327)	25 (635)	---	3/4 (19)	1-13/16 (46)	14-1/2 (368)	18-3/4 (476)	3 (76)	3-1/4 (83)	5-1/2 (140)	5/8 (16)	101	127
90L	1.5	1450	14-5/8 (371)	31 (787)	29-5/8 (752)	10-3/4 (273)	12-7/8 (327)	25 (635)	---	3/4 (19)	1-13/16 (46)	14-1/2 (368)	18-3/4 (476)	3 (76)	3-1/4 (83)	5-1/2 (140)	5/8 (16)	105	131
100L	2.2	1450	14-5/8 (371)	31 (787)	32-1/4 (819)	10-3/4 (273)	12-7/8 (327)	25 (635)	---	3/4 (19)	1-13/16 (46)	16 (406)	18-3/4 (476)	3 (76)	3-1/4 (83)	5-1/2 (140)	5/8 (16)	125	156
112M	4	2900	14-5/8 (371)	31 (787)	32-1/4 (819)	10-3/4 (273)	12-7/8 (327)	25 (635)	---	3/4 (19)	1-13/16 (46)	16 (406)	18-3/4 (476)	3 (76)	3-1/4 (83)	5-1/2 (140)	5/8 (16)	120	150
132S	5.5, 7.5	2900	14-5/8 (371)	39-3/8 (1000)	41-3/8 (1051)	10-3/4 (273)	12-7/8 (327)	33-3/8 (848)	---	3/4 (19)	1-13/16 (46)	16-5/8 (422)	18-3/4 (476)	3 (76)	3-1/4 (83)	5-1/2 (140)	3/4 (19)	175	219
160M	11, 15	2900	16 (406)	46-1/2 (1181)	45-1/8 (1146)	13 (330)	14 (356)	36-1/2 (927)	18-1/4 (464)	7/8 (22)	2-15/16 (75)	18-7/8 (479)	21 (533)	5 (127)	3-1/4 (83)	5-1/2 (140)	3/4 (19)	248	311

DEVIATION FOR LINEAR DIMENSIONS ARE AS PER IS:2102 VERY COARSE CLASS.

CLASS	0.5	3	6	30	120	400	1000	2000
ABOVE	0.5	3	6	30	120	400	1000	2000
UP TO & INCLUDING	3	6	30	120	400	1000	2000	4000
VERY COARSE CLASS	± 0.5	± 1.0	± 1.5	± 2.5	± 4.0	± 6.0	± 8.0	

MAXIMUM WORKING PRESSURE 175 PSI (12 BAR)



- NOTE :
- 1) THE FOUNDATION TO BE MADE OF CONCRETE ON SOLID GROUND.
 - 2) FOUNDATION BOLTS & PACKER PLATES TO BE GROUTED WITH QUICK SETTING NON-SHRINK GROUT ONLY.
 - 3) RECOMMENDED MAKE : ACC "SHRINKKOMP" / FORSORC "CONBEXTRA-GP2" OR EQUIVALENT BALANCE HOLLOW PORTION OF BASEFRAME TO BE GROUTED WITH PORTLAND CEMENT, SAND & AGGREGATE IN PROPORTION OF 1:2:2 GRAVEL SIZE SHOULD BE < 18 TO 20 MM. AFTER FINAL GROUTING ALL SURFACE SHOULD BE FINISHED WITH FINE PLASTER.
 - 4) THE FOUNDATION MUST BE ATLEAST 2.5 TIMES THE WEIGHT OF THE PUMP UNIT.
 - 5) FOUNDATION DETAILS ARE FOR REFERENCE ONLY, SHOULD BE CONSTRUCTED BY CUSTOMER AS PER SITE REQUIREMENT ONLY.
 - 6) PUMP SET IMAGE IS PROVIDED FOR DIMENSIONS REFERENCE ONLY AND IS NOT TO SCALE.

NOZZLE SIZES		SIZE		DISCHARGE		SUCTION	
		1-1/4" NPT	1-1/2" NPT				

REV	DATE	BY	CHK	APP	DESCRIPTION
03	13/03/15	VP	DJ	KS	GENERAL TOLERANCE DETAILS ADDED
02	21/02/14	VP	DJ	KS	MOTOR FRAME SIZE CORRECTED
01	28/03/13	NP	DJ	KS	FOUNDATION DETAILS ADDED
00	14/08/12	NP	DJ	KS	ORIGINAL RELEASE

TITLE	1510 1-1/4BC PUMP
DWG NO.	1510-1-1/4BC
MATL	---
DWN	NP
DATE	14/08/12
CKD	DJ
DATE	14/08/12
SCALE	NTS
TOLERANCES UNLESS OTHERWISE SPECIFIED:	
XXX	XXX
XXXX	XXXX
ANGLE	FRAC

THIRD ANGLE PROJECTION

Xylem Water Solutions India Private Limited
 Plot No. 731, GIDC Savli, Manjusr, Savli Road, Vapodara-381 770, Gujarat, India.
 Tel : +91 2667 265800.