

DIMENSIONS ARE SUBJECT TO CHANGE, NOT TO BE USED FOR CONSTRUCTION PURPOSES UNLESS CERTIFIED.

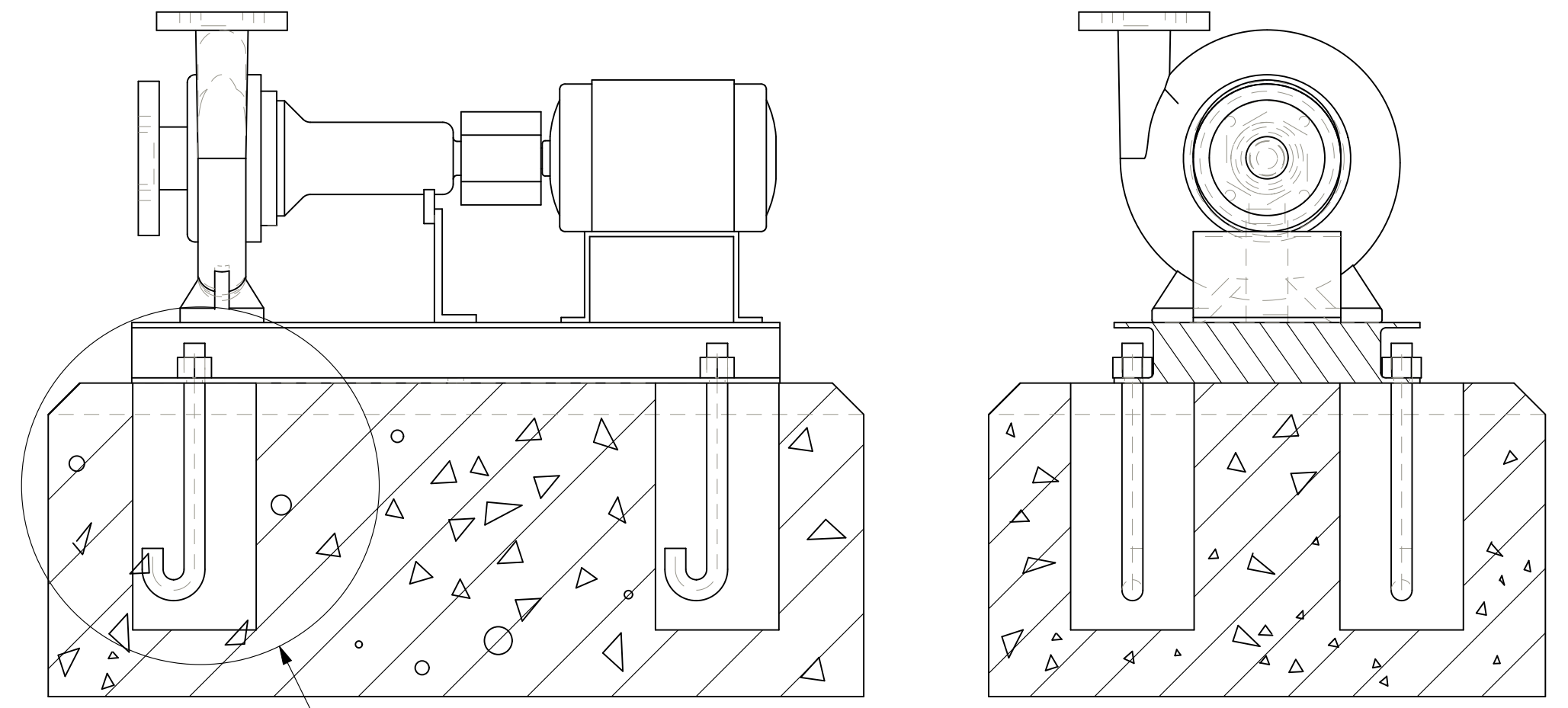
DIMENSIONS- Inches (mm)						STANDARD SEAL 1510, 1510-F												WEIGHT kg. APPROX	OPERATING WEIGHT kg. APPROX
MOTOR FRAME	MOTOR KW	MOTOR RPM	HA	HB	HC MAX	HD	2HE	HF	HH	HL	HM MAX	HO	HP	Y	Z				
71	0.37	1450	12 (305)	28-3/4 (305)	26-15/16 (684)	9-3/4 (248)	10-1/4 (260)	22-1/2 (572)	3/4 (19)	3-1/8 (79)	12-3/4 (324)	14-3/4 (375)	3 (76)	3-1/4 (83)	4-1/2 (114)	71	89		
80	0.55, 0.75	1450	12 (305)	28-3/4 (730)	28-3/8 (721)	9-3/4 (248)	10-1/4 (260)	22-1/2 (572)	3/4 (19)	3-1/8 (79)	13-3/8 (340)	14-3/4 (375)	3 (76)	3-1/4 (83)	4-1/2 (114)	76	95		
90S	1.5	2900	12 (305)	28-3/4 (730)	28-1/2 (724)	9-3/4 (248)	10-1/4 (260)	22-1/2 (572)	3/4 (19)	3-1/8 (79)	13-1/2 (343)	14-3/4 (375)	3 (76)	3-1/4 (83)	4-1/2 (114)	91	113		
90L	2.2	2900	12 (305)	28-3/4 (730)	29-1/2 (749)	9-3/4 (248)	10-1/4 (260)	22-1/2 (572)	3/4 (19)	3-1/8 (79)	13-1/2 (343)	14-3/4 (375)	3 (76)	3-1/4 (83)	4-1/2 (114)	94	118		
112M	4	2900	14-5/8 (371)	31 (787)	32-1/4 (819)	9-3/4 (248)	12-7/8 (327)	25 (635)	3/4 (19)	1-3/4 (44)	15 (381)	14-3/4 (375)	3 (76)	3-1/4 (83)	4-1/2 (114)	112	139		
132S	5.5	2900	14-5/8 (371)	34-5/8 (879)	33 (838)	10-3/4 (273)	12-7/8 (327)	28-5/8 (727)	3/4 (19)	1-3/4 (44)	15 (381)	15-3/4 (400)	3 (76)	3-1/4 (83)	4-1/2 (114)	121	151		

DEVIATION FOR LINEAR DIMENSIONS ARE AS PER IS:2102 VERY COARSE CLASS.

ABOVE	0.5	3	6	30	120	400	1000	2000
UP TO & INCLUDING	3	6	30	120	400	1000	2000	4000
VERY COARSE CLASS	± 0.5	± 1.0	± 1.5	± 2.5	± 4.0	± 6.0	± 8.0	

MAXIMUM WORKING PRESSURE 175 PSI (12 BAR)

NOZZLE SIZES	
DISCHARGE	SUCTION
1-1/4" NPT	1-1/2" NPT



- NOTE :
- 1) THE FOUNDATION TO BE MADE OF CONCRETE ON SOLID GROUND.
  - 2) FOUNDATION BOLTS & PACKER PLATES TO BE GROUTED WITH QUICK SETTING NON-SHRINK GROUT ONLY.
  - 3) RECOMMENDED MAKE : ACC "SHRINKKOMP" / FORSORC "CONBEXTRA-GP2" OR EQUIVALENT BALANCE HOLLOW PORTION OF BASEFRAME TO BE GROUTED WITH PORTLAND CEMENT, SAND & AGGREGATE IN PROPORTION OF 1:2:2 GRAVEL SIZE SHOULD BE < 18 TO 20 MM. AFTER FINAL GROUTING ALL SURFACE SHOULD BE FINISHED WITH FINE PLASTER.
  - 4) THE FOUNDATION MUST BE ATLEAST 2.5 TIMES THE WEIGHT OF THE PUMP UNIT.
  - 5) FOUNDATION DETAILS ARE FOR REFERENCE ONLY, SHOULD BE CONSTRUCTED BY CUSTOMER AS PER SITE REQUIREMENT ONLY.
  - 6) PUMP SET IMAGE IS PROVIDED FOR DIMENSIONS REFERENCE ONLY AND IS NOT TO SCALE.

NOZZLE SIZES		03 GENERAL TOLERANCE DETAILS ADDED		13/03/15	VP	DJ	KS	TITLE 1510 1-1/4AC PUMP		DWG NO. 1510-1-1/4AC		THIRD ANGLE PROJECTION
SIZE		02 MOTOR FRAME SIZE CORRECTED		21/02/14	VP	DJ	KS	MATERIAL		SCALE		THIS DRAWING AND THE INFORMATION DEPICTED THEREIN IS THE PROPERTY OF XYLEM. COPIES ARE ISSUED IN STRICT CONFIDENCE AND SHALL NOT BE REPRODUCED OR COPIED, OR USED AS THE BASIS FOR THE MANUFACTURE OR SALE OF PRODUCTS WITHOUT PRIOR WRITTEN PERMISSION OF XYLEM.
DISCHARGE 1-1/4" NPT		01 FOUNDATION DETAILS ADDED		28/03/13	NP	DJ	KS	DWN NP	DATE 14/08/12	CKD DJ	DATE 14/08/12	
SUCTION 1-1/2" NPT		04 SUPPORT FOOT MOUNTING DIRECTION CHANGED		12/12/16	VP	KS	KS	TOLERANCES UNLESS OTHERWISE SPECIFIED:		X.XXXE		<p>Xylem Water Solutions India Private Limited Plot No. 731, GIDC Savli, Manjusr, Savli Road, Vasodara-381 770, Gujarat, India. Tel : +91 2667 265800.</p>
REVISION		REVISION		DATE	BY	CKD	APP	DATE	BY	CKD	APP	