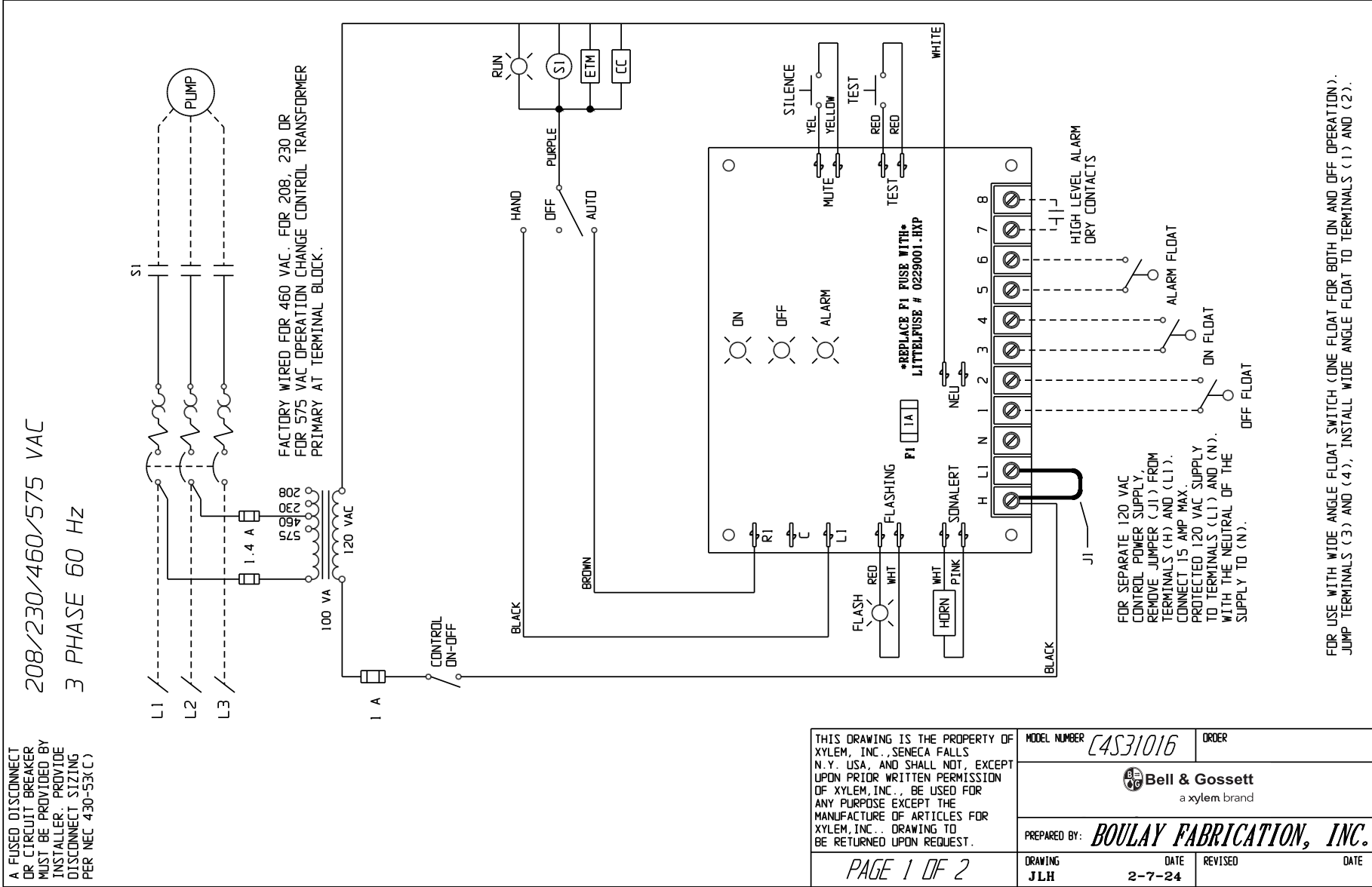


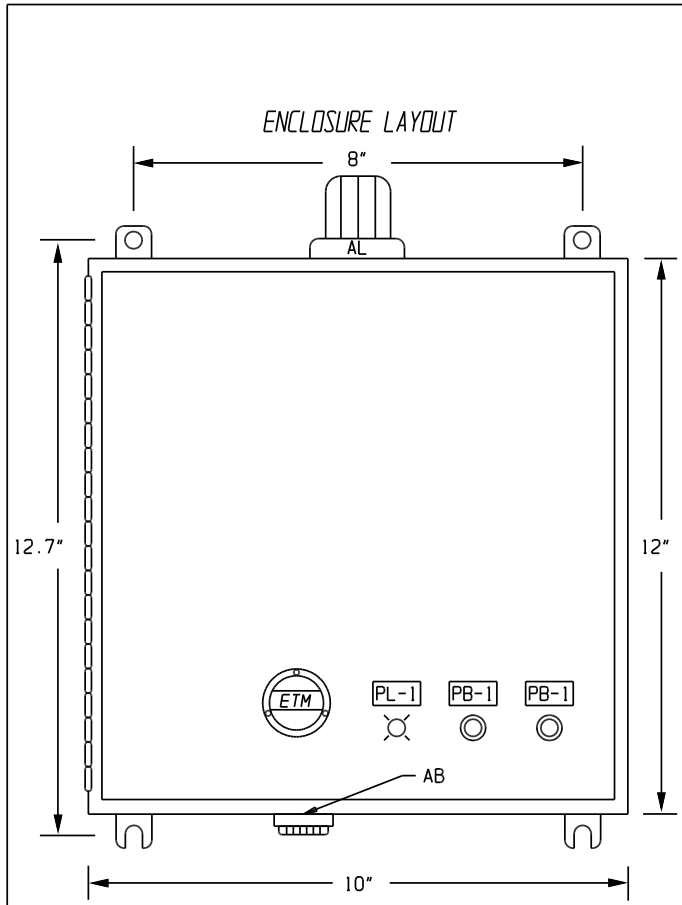
C4S31016

Core 4 Panels

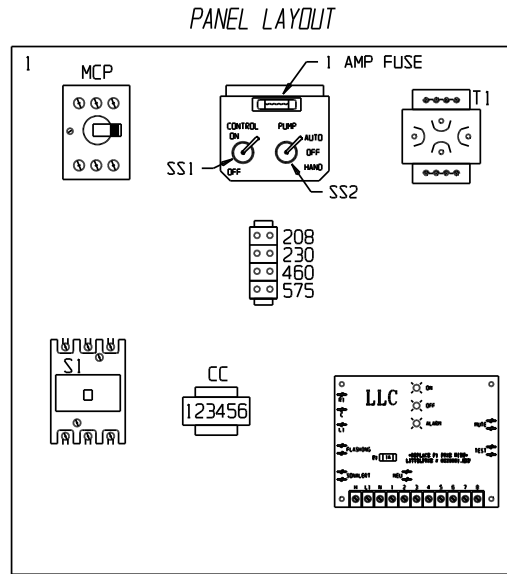


THIS DRAWING IS THE PROPERTY OF XYLEM, INC., SENECA FALLS N.Y. USA, AND SHALL NOT, EXCEPT UPON PRIOR WRITTEN PERMISSION OF XYLEM, INC., BE USED FOR ANY PURPOSE EXCEPT THE MANUFACTURE OF ARTICLES FOR XYLEM, INC.. DRAWING TO BE RETURNED UPON REQUEST.	MODEL NUMBER	C4S31016	ORDER
	Bell & Gossett a xylem brand		
	PREPARED BY:	BOULAY FABRICATION, INC.	
DRAWING	DATE	REVISED	DATE
J.L.H.	2-7-24		

CONTROL PANEL LAYOUT




BILL OF MATERIALS



ITEM	QTY.	MFGR.	CAT. NUMBER	DESCRIPTION
MCP	1	ALLEN BRADLEY	140MP-A3E-C16	ADJUSTABLE MOTOR CIRCUIT PROTECTORS
S1	1	ALLEN BRADLEY	DP30ND3	MOTOR CONTACTORS
T1	1	SNC	BA0100ZEF	TRANSFORMER WITH PRIMARY FUSES
LLC	1	BOULAY FABRICATION	BFI-LLC-120-SIM/RB-80	LIQUID LEVEL CONTROL
SS1	1	GAYNOR	7205C	SWITCHES: CONTROL ON-OFF
SS2	1	GAYNOR	7152C	SWITCHES: HAND-OFF-AUTO
PB1	2	ALLEN BRADLEY	800FD-F3X10	GREEN PUSH BUTTON: TEST/SILENCE
PL1	1	ALLEN BRADLEY	800FD-P3N5	GREEN PILOT LIGHT: RUN
ETM	1	ENM	T50B2	ELAPSED TIME METER
CC	1	TRUMETER	RV2-4916	CYCLE COUNTER
AB	1	FLOYD BELL	MC-09-201-Q	ALARM BUZZER
AL	1	INGRAM	R15-MB	ALARM LIGHT
1	1	BFI	BP1210	PANEL
2	1	FIBOX	AR12106CHSSL	TYPE 4X FRP ENCLOSURE

THIS DRAWING IS THE PROPERTY OF XYLEM, INC., SENECA FALLS N.Y., USA, AND SHALL NOT, EXCEPT UPON PRIOR WRITTEN PERMISSION OF XYLEM, INC., BE USED FOR ANY PURPOSE EXCEPT THE MANUFACTURE OF ARTICLES FOR XYLEM, INC.. DRAWING TO BE RETURNED UPON REQUEST.

MODEL NUMBER	C4S31016	ORDER
 a xylem brand		
PREPARED BY:	BOULAY FABRICATION, INC.	
DRAWING	DATE	REVISED
JLH	2-7-24	

PAGE 2 OF 2



Xylem Inc.
 Phone: (847) 966-3700
 Fax: (847) 965-8379
www.xylem.com/bellgossett

Xylem and Bell & Gossett are registered trademarks of Xylem Inc. or one of its subsidiaries. All other trademarks or registered trademarks are property of their respective owners.
 © 2024 Xylem Inc. BGC4S31016 R1 April 2024