

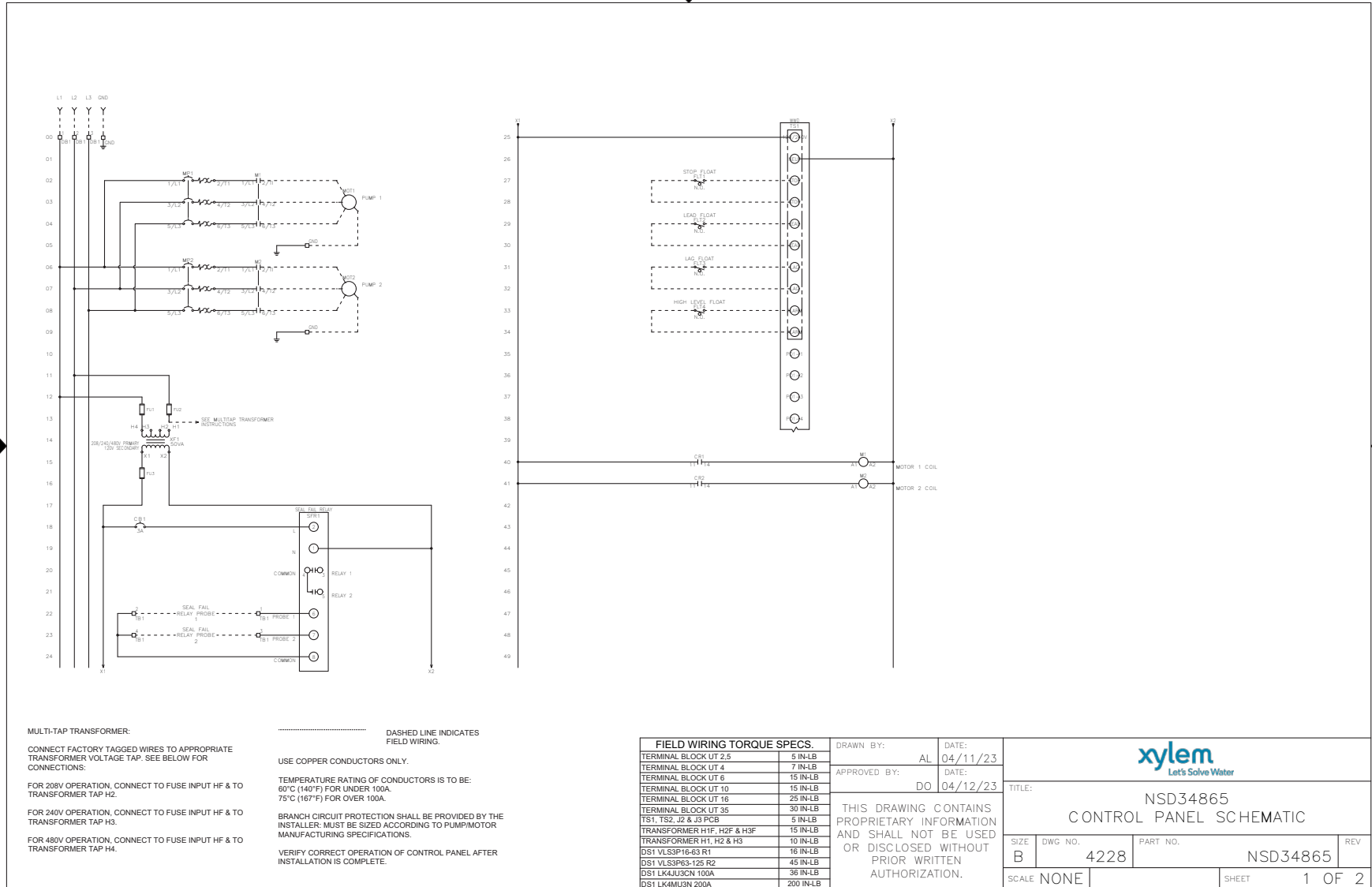
4DWC Duplex NSD34865

Control Panel Schematic and Layout

CONTROL PANEL SCHEMATIC

FNAME: NSD34865

REVDATE: 0423

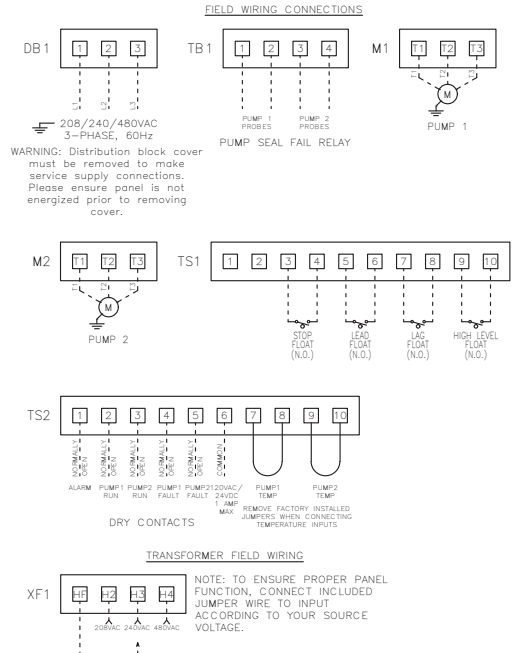
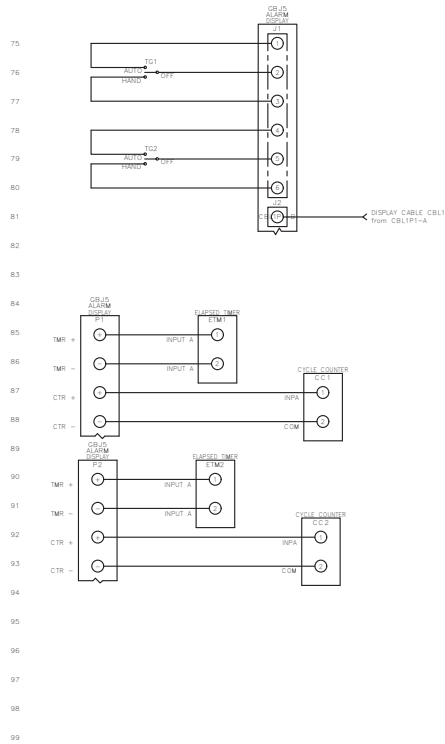
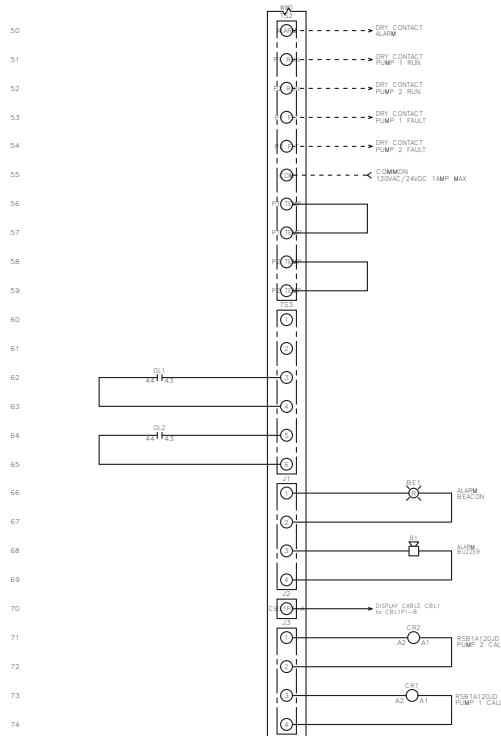


CONTROL PANEL SCHEMATIC

BGNSD34865 R1

FNAME: NSD34865

REVDATE: 0423



MULTI-TAP TRANSFORMER:

CONNECT FACTORY TAGGED WIRES TO APPROPRIATE TRANSFORMER VOLTAGE TAP. SEE BELOW FOR CONNECTIONS:

FOR 208V OPERATION, CONNECT TO FUSE INPUT HF & TO TRANSFORMER TAP H2.

FOR 240V OPERATION, CONNECT TO FUSE INPUT HF & TO TRANSFORMER TAP H3.

FOR 480V OPERATION, CONNECT TO FUSE INPUT HF & TO TRANSFORMER TAP H4.

..... DASHED LINE INDICATES FIELD WIRING.

USE COPPER CONDUCTORS ONLY.

TEMPERATURE RATING OF CONDUCTORS IS TO BE: 60°C (140°F) FOR UNDER 100A. 75°C (167°F) FOR OVER 100A.

BRANCH CIRCUIT PROTECTION SHALL BE PROVIDED BY THE INSTALLER. MUST BE SIZED ACCORDING TO PUMPMOTOR MANUFACTURING SPECIFICATIONS.

VERIFY CORRECT OPERATION OF CONTROL PANEL AFTER INSTALLATION IS COMPLETE.

FIELD WIRING TORQUE SPECS.	
TERMINAL BLOCK UT 2.5	5 IN-LB
TERMINAL BLOCK UT 4	7 IN-LB
TERMINAL BLOCK UT 6	15 IN-LB
TERMINAL BLOCK UT 10	15 IN-LB
TERMINAL BLOCK UT 16	25 IN-LB
TERMINAL BLOCK UT 35	30 IN-LB
TS1, TS2, J2 & J3 PCB	5 IN-LB
TRANSFORMER H1F, H2F & H3F	15 IN-LB
TRANSFORMER H1, H2 & H3	10 IN-LB
DS1 VLS3P16-63 R1	16 IN-LB
DS1 VLS3P63-125 R2	45 IN-LB
DS1 LK4JU3CN 100A	36 IN-LB
DS1 LK4MU3N 200A	200 IN-LB

DRAWN BY: AL
DATE: 04/11/23
APPROVED BY: DO
DATE: 04/12/23

THIS DRAWING CONTAINS PROPRIETARY INFORMATION AND SHALL NOT BE USED OR DISCLOSED WITHOUT PRIOR WRITTEN AUTHORIZATION.



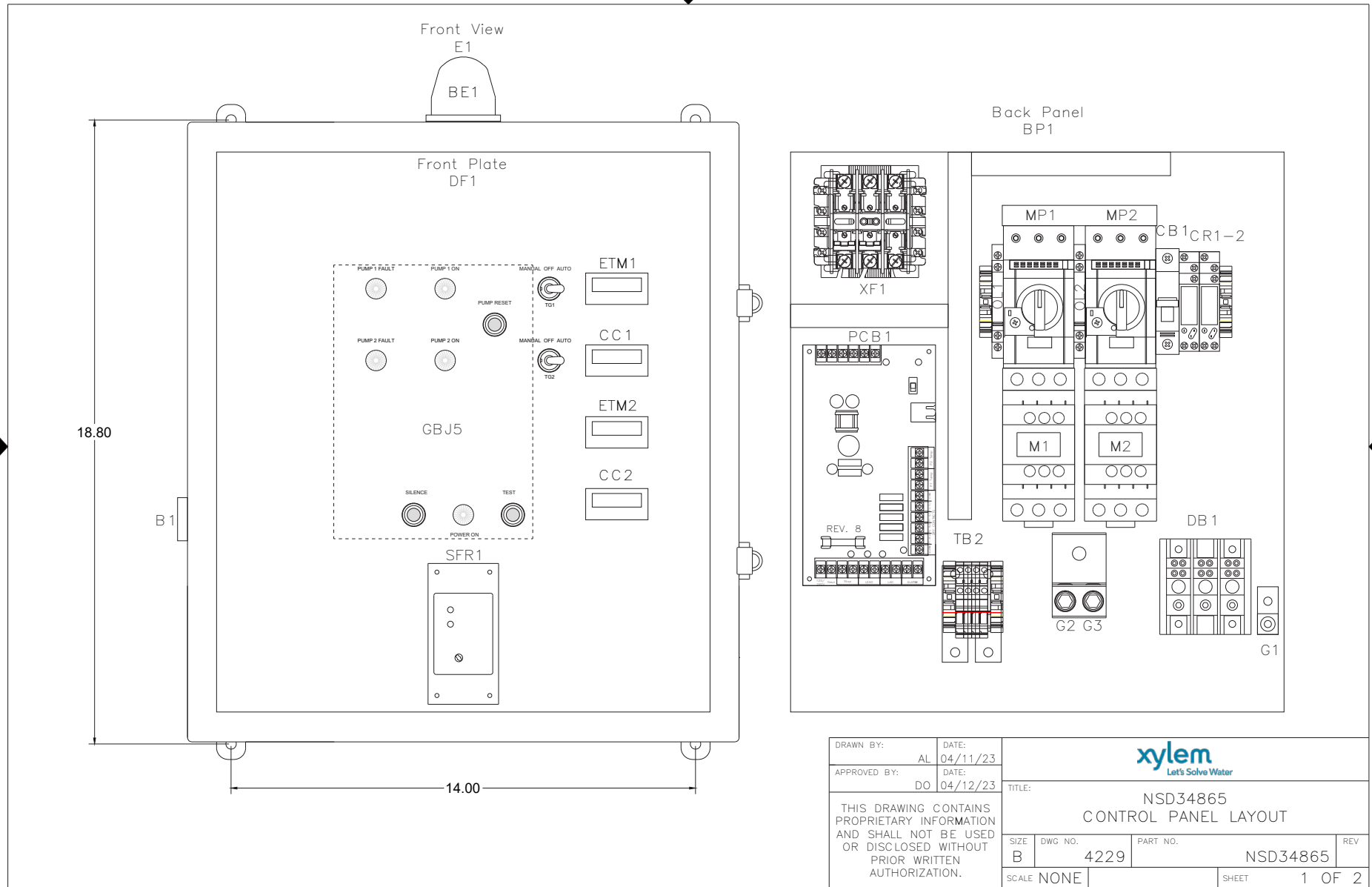
TITLE: NSD34865 CONTROL PANEL SCHEMATIC			
SIZE: B	DWG NO: 4228	PART NO:	REV
SCALE: NONE		SHEET: 2 OF 2	

CONTROL PANEL LAYOUT

BGNSD34865 R1

FNAME: NSD34865

REVDATE: 0423



DRAWN BY:	AL	DATE:	04/11/23
APPROVED BY:	DO	DATE:	04/12/23



THIS DRAWING CONTAINS PROPRIETARY INFORMATION AND SHALL NOT BE USED OR DISCLOSED WITHOUT PRIOR WRITTEN AUTHORIZATION.

TITLE: NSD34865 CONTROL PANEL LAYOUT			
SIZE	DWG NO.	PART NO.	REV
B	4229	NSD34865	
SCALE	NONE	SHEET	1 OF 2


CONTROL PANEL LAYOUT

FNAME: NSD34865

REVDATE: 0423

QTY	MANUFACTURER	DESCRIPTION	PART NUMBER	REF.
1	Integra	P.C. Nema 4X Enclosure 18X16X10	H181610HCLL	E1
1	All-Spec	Back Panel	625	BP1
1	All-Spec	Dead Front	622P	DF1
1	Integra	Hinge Kit	US0PK-P909	N/A
1	Ingram	Beacon	R10-SM	BE1
1	Ingram	Buzzer	PB-024-AD	B1
1	See Water	Display Board	GBJ5	GBJ5
5	LEDTRONICS	White Lense	LENS-LCD780-CWF	N/A
2	See Water	Flat Cable Assembly	IDC-25MB	N/A
2	Molex	4 Pin Connector	09-50-3041	N/A
1	Molex	6 Pin Connector	09-50-3061	N/A
1	See Water	Power Circuit Board	WWD	PCB1
2	Carling	HOA Toggle Switch	6FC57-73	TG1-2
1	Schneider	Multitap Transformer 50VA	9070TF50D20	XF1
2	Mersen	ATQR 3/10A Fuse	ATQR-3/10A	XF1
1	Mersen	TRM 6/10A Fuse	TRM-6/10A	XF1
2	Schneider	Motor Protector	GV3P65	MP1-2
2	Schneider	Side Mount Auxiliary	GVAN11	OL1-2

QTY	MANUFACTURER	DESCRIPTION	PART NUMBER	REF.
2	Schneider	Contactora	LC1D65AC7	M1-2
1	Schneider	Distribution Block	9080LBA362104	N/A
1	Schneider	Circuit Breaker	B1E1C3	CB1
2	Trumeter	Elapsed Time Meter	6320-2500-0000	ETM1-2
2	Trumeter	Cycle Counter	6300-2500-0000	CC1-2
2	Schneider	Mini Plug In Relay Holder	RSZE1S35M	CR1-2
2	Schneider	Mini Plug In Relay Clamp	RSZR215	CR1-2
2	Schneider	Mini Plug In Relay 12VDC	RSB1A120JD	CR1-2
1	Macromatics	Door Mount Dual Seal Fail	SFF120C100	SFR1
3	Phoenix Contact	Terminal Block UT-35	3044225	TB1
1	Phoenix Contact	Terminal Block UT-35-PE	3044241	G1
5	Phoenix Contact	End Stop	3022218	N/A
1	Burndy	Ground	2S250	G2-3
5	LEDTRONICS	White Lense	LENS-LCD780-CWF	N/A
2	Altech	Angled Mounting Bracket	CA603	N/A
4	See Water	N.O. Narrow Angle Floats 50'	FPC0N50	N/A
1	UL	508A UL Label	N/A	N/A

DRAWN BY:	AL	DATE:	04/11/23	 Let's Solve Water			
APPROVED BY:	DO	DATE:	04/12/23				
THIS DRAWING CONTAINS PROPRIETARY INFORMATION AND SHALL NOT BE USED OR DISCLOSED WITHOUT PRIOR WRITTEN AUTHORIZATION.				TITLE:			
				NSD34865 CONTROL PANEL LAYOUT			
				SIZE	DWG NO.	PART NO.	REV
B	4229	NSD34865					
SCALE	NONE	SHEET	2 OF 2				



Xylem Inc.
 2881 East Bayard Street Ext.
 Seneca Falls, NY 13148
 Phone: (800) 453-6777
 Fax: (888) 322-5877
www.xylem.com/bellgossett