

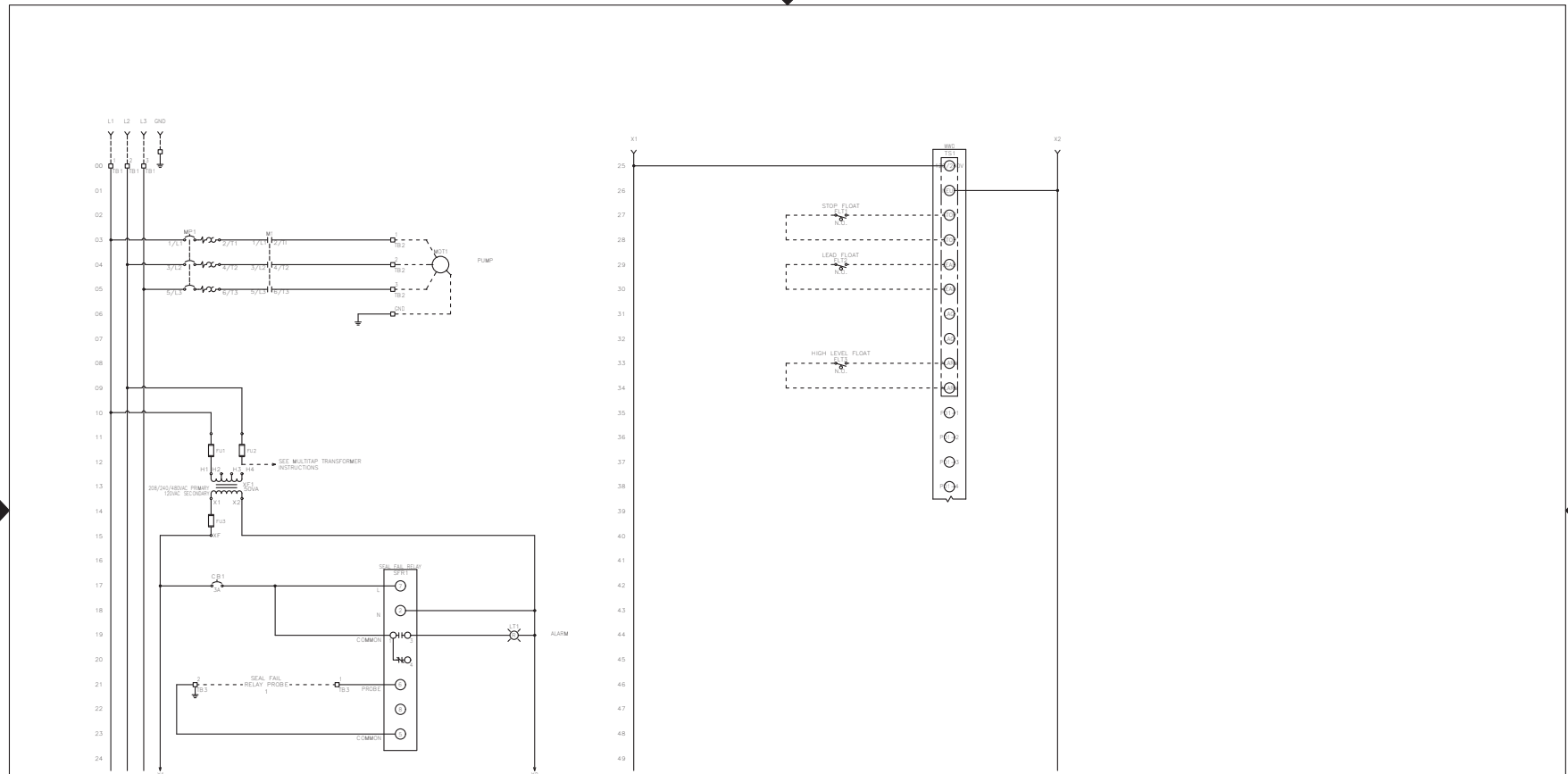
# 3DWS/4DWS Simplex SDS31723

## Control Panel Schematic and Layout

### CONTROL PANEL SCHEMATIC

FNAME: SDS31723

REVDATE: 0523



**MULTI-TAP TRANSFORMER:**

CONNECT FACTORY TAGGED WIRES TO APPROPRIATE TRANSFORMER VOLTAGE TAP. SEE BELOW FOR CONNECTIONS:

FOR 208V OPERATION, CONNECT TO FUSE INPUT HF & TO TRANSFORMER TAP H2.

FOR 240V OPERATION, CONNECT TO FUSE INPUT HF & TO TRANSFORMER TAP H3.

FOR 480V OPERATION, CONNECT TO FUSE INPUT HF & TO TRANSFORMER TAP H4.

----- DASHED LINE INDICATES FIELD WIRING.

USE COPPER CONDUCTORS ONLY.

TEMPERATURE RATING OF CONDUCTORS IS TO BE: 90°C (194°F) FOR UNDER 100A, 75°C (167°F) FOR OVER 100A.


BRANCH CIRCUIT PROTECTION SHALL BE PROVIDED BY THE INSTALLER. MUST BE SIZED ACCORDING TO PUMPMOTOR MANUFACTURING SPECIFICATIONS.

VERIFY CORRECT OPERATION OF CONTROL PANEL AFTER INSTALLATION IS COMPLETE.

FIELD WIRING TORQUE SPECS.	
TERMINAL BLOCK UT 2.5	5 IN-LB
TERMINAL BLOCK UT 4	7 IN-LB
TERMINAL BLOCK UT 6	15 IN-LB
TERMINAL BLOCK UT 10	15 IN-LB
TERMINAL BLOCK UT 16	25 IN-LB
TERMINAL BLOCK UT 35	30 IN-LB
TS1, TS2, J2 & J3 PCB	5 IN-LB
TRANSFORMER H1F, H2F & H3F	15 IN-LB
TRANSFORMER H1, H2 & H3	10 IN-LB
DS1 VLS3P16-63 R1	18 IN-LB
DS1 VLS3PE3-125 R2	45 IN-LB
DS1 LK4JU3CN 100A	36 IN-LB
DS1 LK4MU3N 200A	200 IN-LB

DRAWN BY: AL  
DATE: 05/18/23  
APPROVED BY: DO  
DATE: 05/18/23

THIS DRAWING CONTAINS PROPRIETARY INFORMATION AND SHALL NOT BE USED OR DISCLOSED WITHOUT PRIOR WRITTEN AUTHORIZATION.

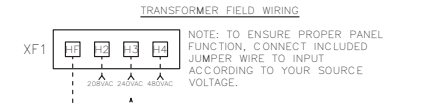
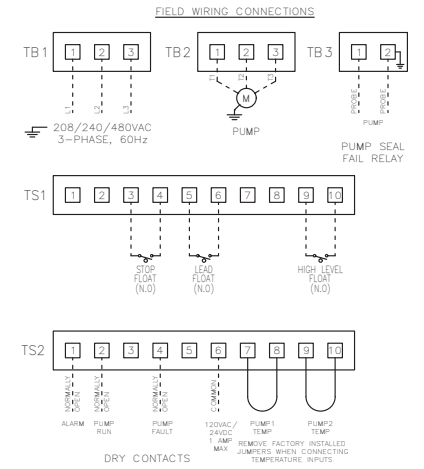
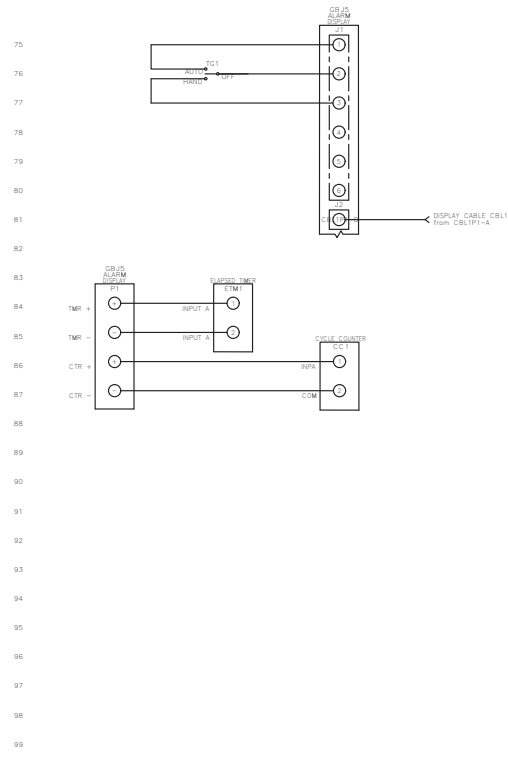
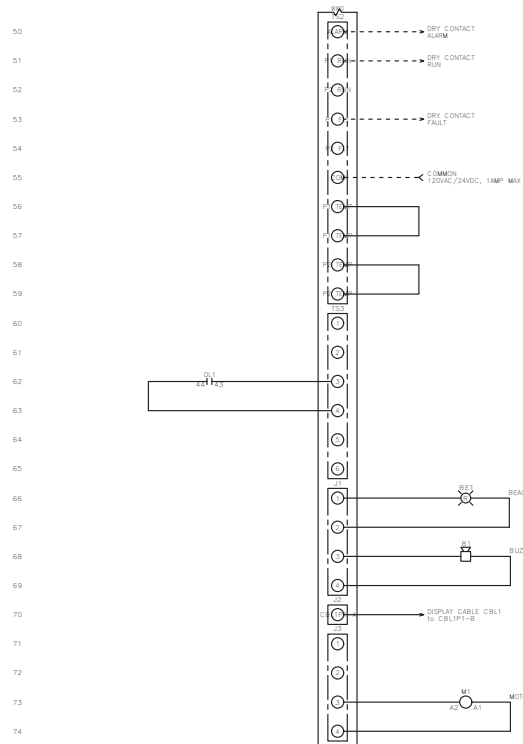
	
TITLE: SDS31723 CONTROL PANEL SCHEMATIC	
SIZE: B	DWG NO: 4401
PART NO: SDS31723	REV: 1
SCALE: NONE	SHEET: 1 OF 2

# CONTROL PANEL SCHEMATIC

BGSDS31723 R1

FNAME: SDS31723

REVDATE: 0523



**MULTI-TAP TRANSFORMER:**

CONNECT FACTORY TAGGED WIRES TO APPROPRIATE TRANSFORMER VOLTAGE TAP. SEE BELOW FOR CONNECTIONS:

FOR 208V OPERATION, CONNECT TO FUSE INPUT HF & TO TRANSFORMER TAP H2.

FOR 240V OPERATION, CONNECT TO FUSE INPUT HF & TO TRANSFORMER TAP H3.

FOR 480V OPERATION, CONNECT TO FUSE INPUT HF & TO TRANSFORMER TAP H4.

----- DASHED LINE INDICATES FIELD WIRING.

USE COPPER CONDUCTORS ONLY.

TEMPERATURE RATING OF CONDUCTORS IS TO BE: 60°C (140°F) FOR UNDER 100A, 75°C (167°F) FOR OVER 100A.

BRANCH CIRCUIT PROTECTION SHALL BE PROVIDED BY THE INSTALLER; MUST BE SIZED ACCORDING TO PUMP/MOTOR MANUFACTURING SPECIFICATIONS.

VERIFY CORRECT OPERATION OF CONTROL PANEL AFTER INSTALLATION IS COMPLETE.

FIELD WIRING TORQUE SPECS.	
TERMINAL BLOCK UT 2.5	5 IN-LB
TERMINAL BLOCK UT 4	7 IN-LB
TERMINAL BLOCK UT 6	15 IN-LB
TERMINAL BLOCK UT 10	15 IN-LB
TERMINAL BLOCK UT 16	25 IN-LB
TERMINAL BLOCK UT 35	30 IN-LB
TS1, TS2, J2 & J3 PCB	5 IN-LB
TRANSFORMER H1F, H2F & H3F	15 IN-LB
TRANSFORMER H1, H2 & H3	10 IN-LB
DS1 VLS3P16-63 R1	16 IN-LB
DS1 VLS3P63-125 R2	45 IN-LB
DS1 LK4JU3CN 100A	36 IN-LB
DS1 LK4MU3N 200A	200 IN-LB

DRAWN BY: AL DATE: 05/18/23  
 APPROVED BY: DO DATE: 05/18/23

THIS DRAWING CONTAINS PROPRIETARY INFORMATION AND SHALL NOT BE USED OR DISCLOSED WITHOUT PRIOR WRITTEN AUTHORIZATION.

**xylem**  
Let's Solve Water

SDS31723  
CONTROL PANEL SCHEMATIC

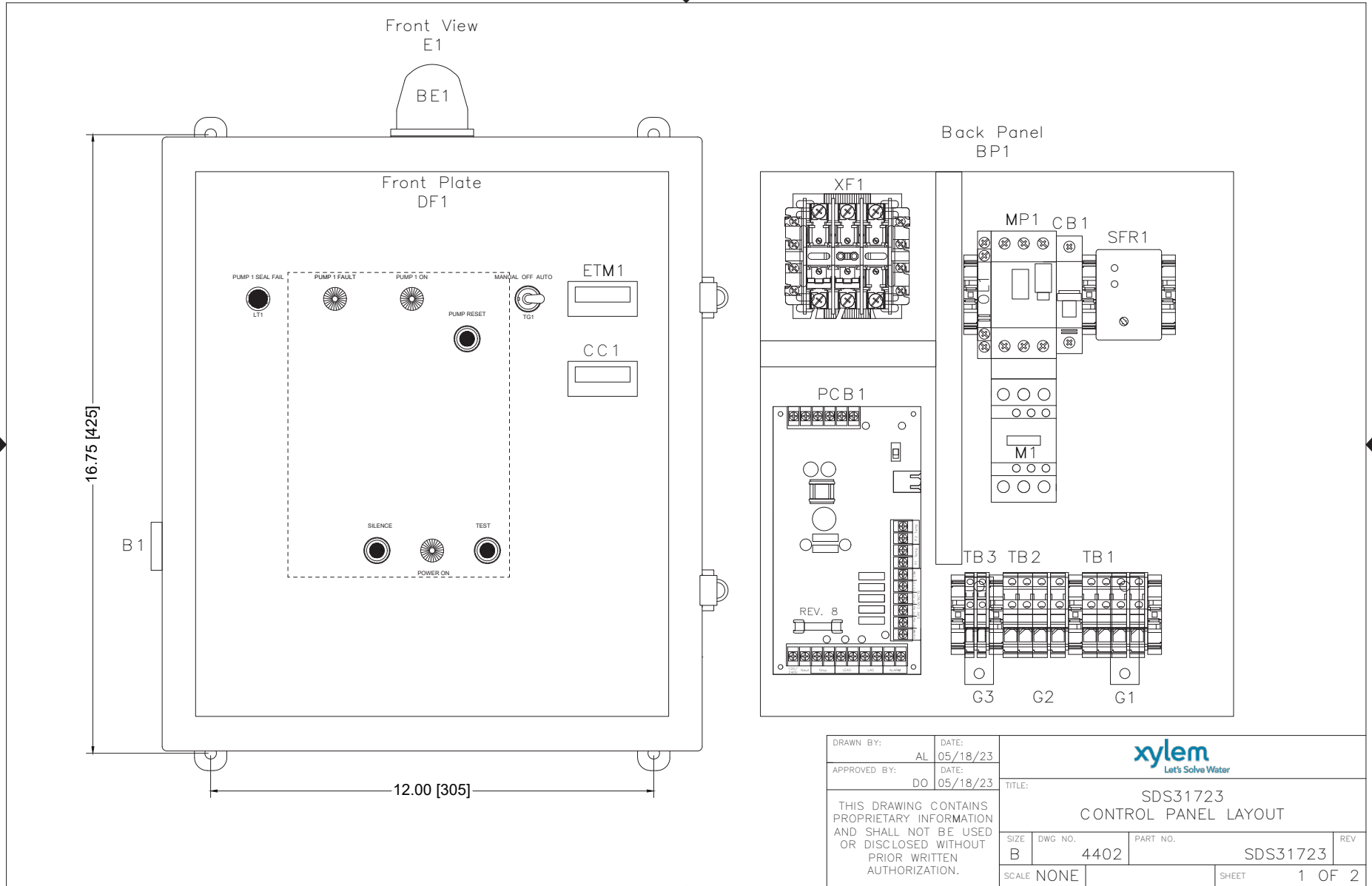
SIZE B	DWG NO. 4401	PART NO. SDS31723	REV
SCALE NONE	SHEET 2 OF 2		


# CONTROL PANEL LAYOUT

BGSDS31723 R1

FNAME: SDS31723

REVDATE: 0523



DRAWN BY: AL		DATE: 05/18/23		 Let's Solve Water	
APPROVED BY: DO		DATE: 05/18/23			
THIS DRAWING CONTAINS PROPRIETARY INFORMATION AND SHALL NOT BE USED OR DISCLOSED WITHOUT PRIOR WRITTEN AUTHORIZATION.				TITLE: SDS31723 CONTROL PANEL LAYOUT	
SIZE	DWG NO.	PART NO.	REV		
B	4402	SDS31723			
SCALE NONE			SHEET 1 OF 2		


# CONTROL PANEL LAYOUT

FNAME: SDS31723

REVDATE: 0523

QTY	MANUFACTURER	DESCRIPTION	PART NUMBER	REF.
1	Integra	P.C. Nema 4X Enclosure	H161407HCLL	E1
1	All-Spec	Dead Front	519P	DF1
1	All-Spec	Back Panel	525	BP1
1	Integra	Hinge Kit	USOPK-909	N/A
1	Ingram	Beacon	R10-SM	BE1
1	Ingram	Buzzer	PB-024-AD	B1
1	VCC	Red Light 125V	1050QC1	LT1
1	See Water	Display Board	GBJ5	N/A
3	LEDTRONICS	White Lense	LENS-LCD780-CWF	N/A
2	See Water	Flat Cable Assembly	IDC-25MB	N/A
2	Molex	4 Pin Connector	09-50-3041	N/A
1	Molex	6 Pin Connector	09-50-3061	N/A
1	See Water	Power Circuit Board	WWD	PCB1
1	Carling	HOA Toggle Switch	6FC57-73	N/A
1	Schneider	Fused Transformer 50VA	9070TF50D20	XF1
2	Mersen	KLDR 3/10A Fuse	KLDR-3/10A	XF1
1	Mersen	FLM 6/10A Fuse	FLM-6/10A	XF1

QTY	MANUFACTURER	DESCRIPTION	PART NUMBER	REF.
1	Schneider	Motor Protector	GV2ME21	MP1
1	Schneider	Side Mount Auxiliary	GVAN11	OL1
1	Schneider	Contactora	LC1D25JL	M1
1	Schneider	Combination Block	GV2AF3	N/A
1	Noark	Circuit Breaker 3A 1 Pole	B1E1C6	CB1
1	Macromatics	Seal Fail Single Channel Relay	SFP120A100	SFR1
1	Macromatics	8 Pin Socket	70169-D	SFR1
1	Trumeter	Elapsed Time Meter	6320-2500-0000	ETM1
1	Trumeter	Cycle Counter	6300-2500-0000	CC1
1	Phoenix Contact	Terminal Block UT-4	3044102	TB3
1	Phoenix Contact	Terminal Block UT-4-PE	3044128	G3
6	Phoenix Contact	Terminal Block UT-10	3044160	TB1-2
2	Phoenix Contact	Terminal Block UT-10-PE	3044173	G1-2
7	Phoenix Contact	End Stop	3022218	N/A
6	Phoenix Contact	End Cover	3047028	N/A
2	Altech	Angled Mounting Bracket	CA603	N/A
3	See Water	N.O. Narrow Angle Floats 50'	FPC0N50	N/A
1	UL	508A UL Labels	N/A	N/A

DRAWN BY:	AL	DATE:	05/18/23				
APPROVED BY:	DO	DATE:	05/18/23				
THIS DRAWING CONTAINS PROPRIETARY INFORMATION AND SHALL NOT BE USED OR DISCLOSED WITHOUT PRIOR WRITTEN AUTHORIZATION.				TITLE:			
				SDS31723 CONTROL PANEL LAYOUT			
				SIZE	DWG NO.	PART NO.	REV
B	4402	SDS31723					
SCALE	NONE	SHEET		2 OF 2			



**Xylem Inc.**  
 2881 East Bayard Street Ext.  
 Seneca Falls, NY 13148  
 Phone: (800) 453-6777  
 Fax: (888) 322-5877  
[www.xylem.com/bellgossett](http://www.xylem.com/bellgossett)