

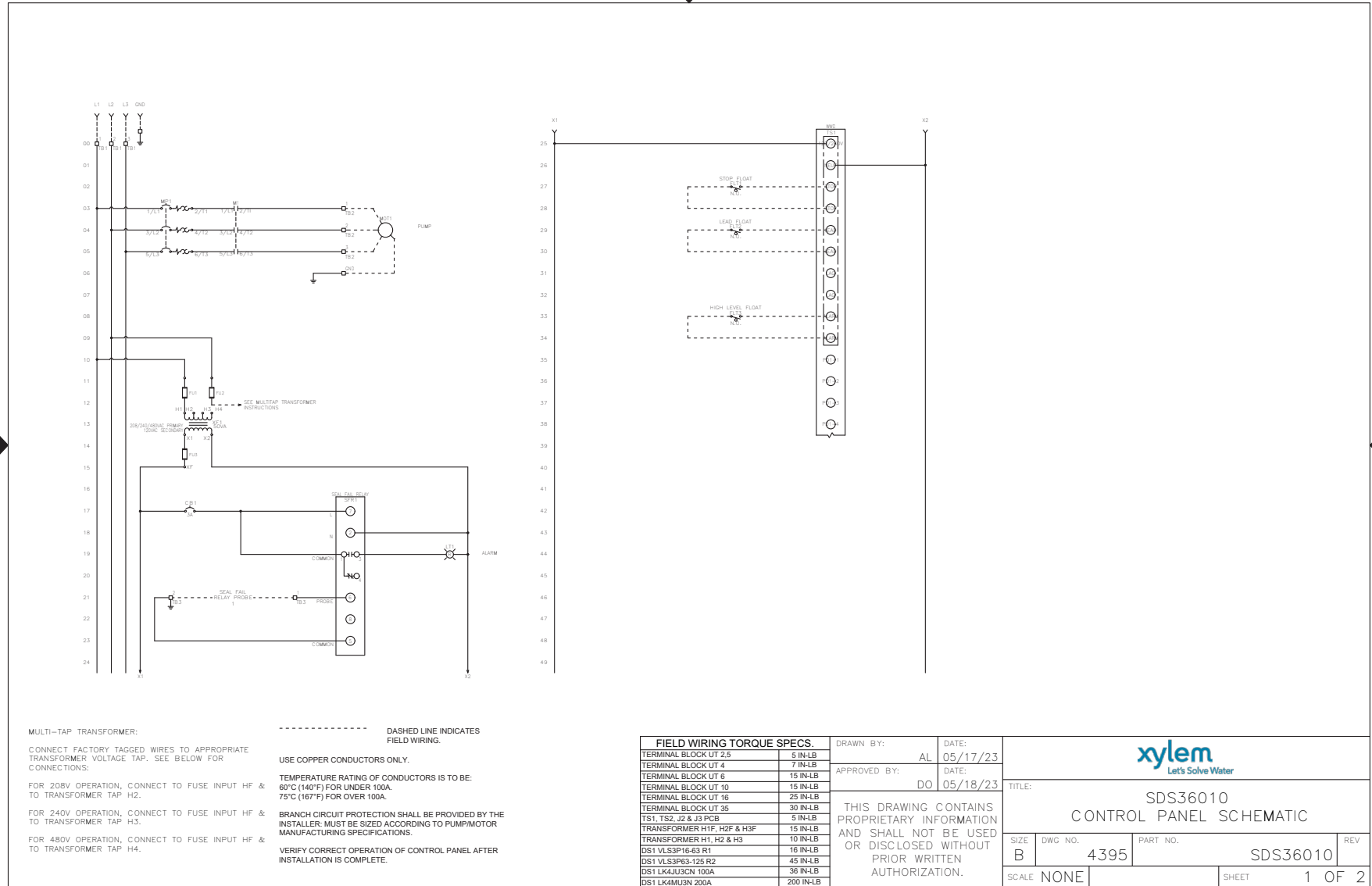
# 3DWS/4DWS Simplex SDS36010

## Control Panel Schematic and Layout

### CONTROL PANEL SCHEMATIC

FNAME: SDS36010

REVDATE: 0523



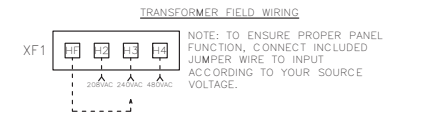
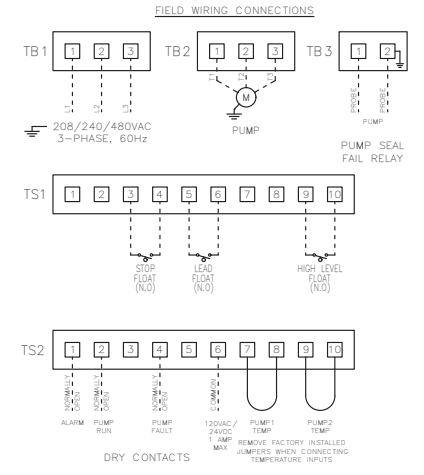
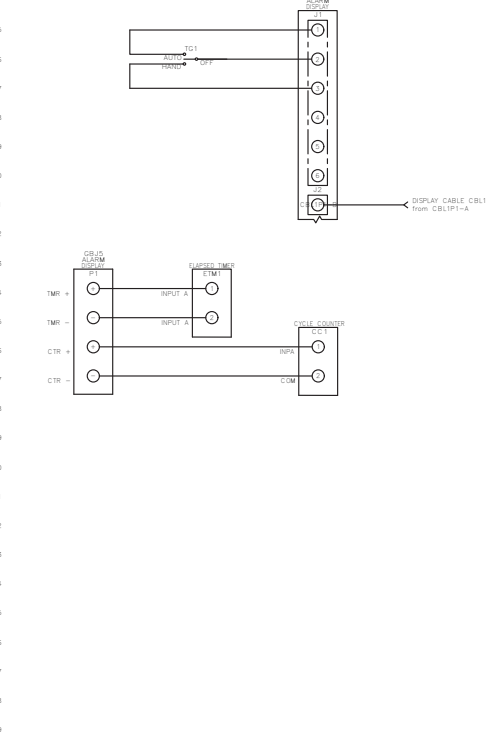
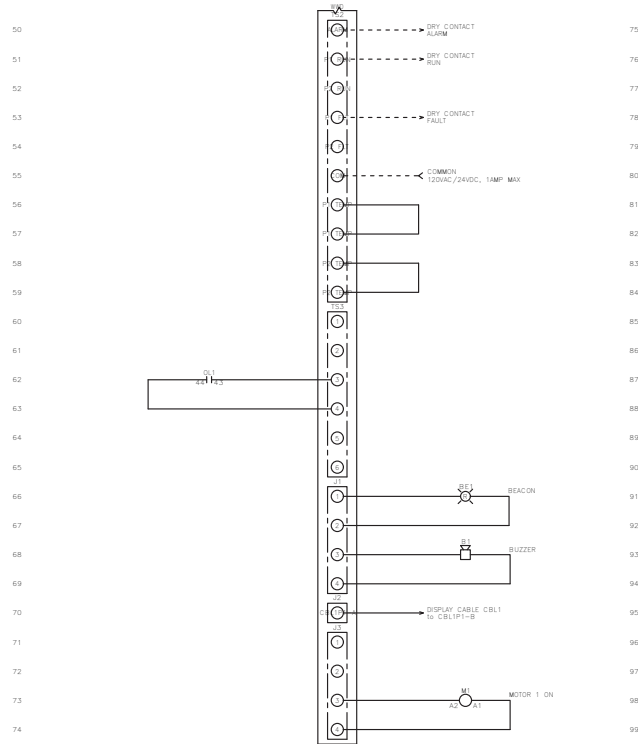
TITLE: SDS36010 CONTROL PANEL SCHEMATIC			
SIZE: B	DWG NO.: 4395	PART NO.: SDS36010	REV: 1 OF 2
SCALE: NONE	SHEET: 1 OF 2		

# CONTROL PANEL SCHEMATIC

BGSDS36010 R1

FNAME: SDS36010

REVDATE: 0523



MULTI-TAP TRANSFORMER: DASHED LINE INDICATES FIELD WIRING.

CONNECT FACTORY TAGGED WIRES TO APPROPRIATE TRANSFORMER VOLTAGE TAP. SEE BELOW FOR CONNECTIONS:

FOR 208V OPERATION, CONNECT TO FUSE INPUT HF & TO TRANSFORMER TAP H2.

FOR 240V OPERATION, CONNECT TO FUSE INPUT HF & TO TRANSFORMER TAP H3.

FOR 480V OPERATION, CONNECT TO FUSE INPUT HF & TO TRANSFORMER TAP H4.

USE COPPER CONDUCTORS ONLY.

TEMPERATURE RATING OF CONDUCTORS IS TO BE: 60°C (140°F) FOR UNDER 100A, 75°C (167°F) FOR OVER 100A.

BRANCH CIRCUIT PROTECTION SHALL BE PROVIDED BY THE INSTALLER; MUST BE SIZED ACCORDING TO PUMP/MOTOR MANUFACTURING SPECIFICATIONS.

VERIFY CORRECT OPERATION OF CONTROL PANEL AFTER INSTALLATION IS COMPLETE.

FIELD WIRING TORQUE SPECS.	
TERMINAL BLOCK UT 2.5	5 IN-LB
TERMINAL BLOCK UT 4	7 IN-LB
TERMINAL BLOCK UT 6	15 IN-LB
TERMINAL BLOCK UT 10	15 IN-LB
TERMINAL BLOCK UT 16	25 IN-LB
TERMINAL BLOCK UT 35	30 IN-LB
TS1, TS2, J2 & J3 PCB	5 IN-LB
TRANSFORMER H1F, H2F & H3F	15 IN-LB
TRANSFORMER H1, H2 & H3	10 IN-LB
DS1 VLS3P16-63 R1	16 IN-LB
DS1 VLS3P63-125 R2	45 IN-LB
DS1 LK4J3CN 100A	36 IN-LB
DS1 LK4MU3N 200A	200 IN-LB

DRAWN BY: AL DATE: 05/17/23

APPROVED BY: DO DATE: 05/18/23

THIS DRAWING CONTAINS PROPRIETARY INFORMATION AND SHALL NOT BE USED OR DISCLOSED WITHOUT PRIOR WRITTEN AUTHORIZATION.

**xylem**  
Let's Solve Water

TITLE: SDS36010 CONTROL PANEL SCHEMATIC

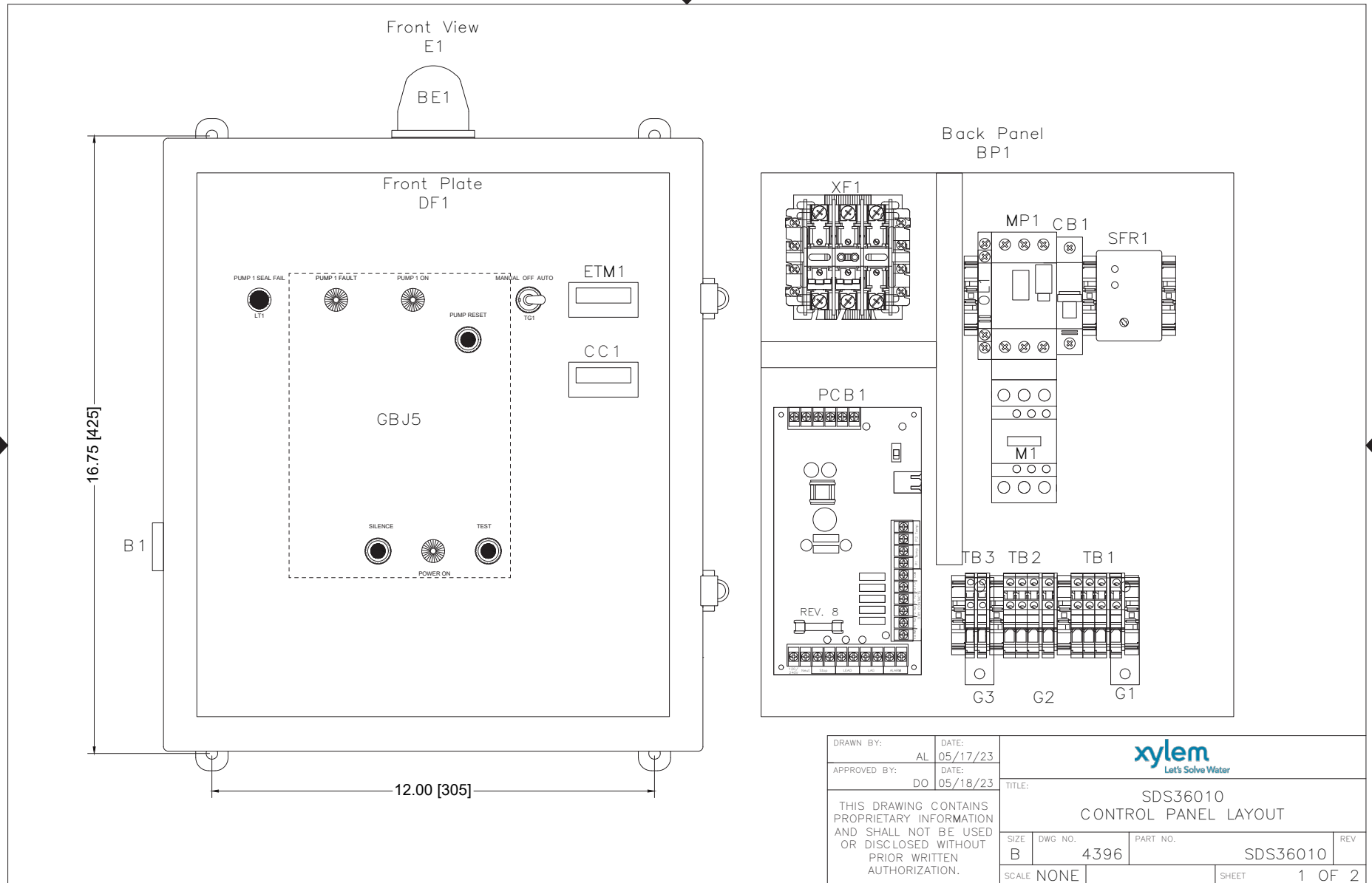
SIZE B	DWG NO. 4395	PART NO.	REV
SCALE NONE	SHEET 2 OF 2		


# CONTROL PANEL LAYOUT

BGSDS36010 R1

FNAME: SDS36010

REVDATE: 0523



DRAWN BY: AL		DATE: 05/17/23		 Let's Solve Water	
APPROVED BY: DO		DATE: 05/18/23			
THIS DRAWING CONTAINS PROPRIETARY INFORMATION AND SHALL NOT BE USED OR DISCLOSED WITHOUT PRIOR WRITTEN AUTHORIZATION.				TITLE: SDS36010 CONTROL PANEL LAYOUT	
SIZE	DWG NO.	PART NO.	REV		
B	4396	SDS36010			
SCALE NONE			SHEET 1 OF 2		


# CONTROL PANEL LAYOUT

FNAME: SDS36010

REVDATE: 0523

QTY	MANUFACTURER	DESCRIPTION	PART NUMBER	REF.
1	Integra	P.C. Nema 4X Enclosure	H161407HCLL	E1
1	All-Spec	Dead Front	519P	DF1
1	All-Spec	Back Panel	525	BP1
1	Integra	Hinge Kit	USOPK-909	N/A
1	Ingram	Beacon	R10-SM	BE1
1	Ingram	Buzzer	PB-024-AD	B1
1	VCC	Red Light 125V	1050QC1	LT1
1	See Water	Display Board	GBJ5	N/A
3	LEDTRONICS	White Lense	LENS-LCD780-CWF	N/A
2	See Water	Flat Cable Assembly	IDC-25MB	N/A
2	Molex	4 Pin Connector	09-50-3041	N/A
1	Molex	6 Pin Connector	09-50-3061	N/A
1	See Water	Power Circuit Board	WWD	PCB1
1	Carling	HOA Toggle Switch	6FC57-73	N/A
1	Schneider	Fused Transformer 50VA	9070TF50D20	XF1
2	Mersen	KLDR 3/10A Fuse	KLDR-3/10A	XF1
1	Mersen	FLM 6/10A Fuse	FLM-6/10A	XF1

QTY	MANUFACTURER	DESCRIPTION	PART NUMBER	REF.
1	Schneider	Motor Protector	GV2ME14	MP1
1	Schneider	Side Mount Auxiliary	GVAN11	OL1
1	Schneider	Contactora	LC1D09JL	M1
1	Schneider	Combination Block	GV2AF3	N/A
1	Noark	Circuit Breaker 3A 1 Pole	B1E1C3	CB1
1	Macromatics	Seal Fail Single Channel Relay	SFP120A100	SFR1
1	Macromatics	8 Pin Socket	70169-D	SFR1
1	Trumeter	Elapsed Time Meter	6320-2500-0000	ETM1
1	Trumeter	Cycle Counter	6300-2500-0000	CC1
1	Phoenix Contact	Terminal Block UT-4	3044102	TB3
1	Phoenix Contact	Terminal Block UT-4-PE	3044128	G3
6	Phoenix Contact	Terminal Block UT-6	3044131	TB1-2
2	Phoenix Contact	Terminal Block UT-6-PE	3044157	G1-2
7	Phoenix Contact	End Stop	3022218	N/A
6	Phoenix Contact	End Cover	3047028	N/A
2	Altech	Angled Mounting Bracket	CA603	N/A
3	See Water	N.O. Narrow Angle Floats 50'	FPC0N50	N/A
1	UL	508A UL Labels	N/A	N/A

DRAWN BY:	AL	DATE:	05/17/23	 Let's Solve Water			
APPROVED BY:	DO	DATE:	05/18/23				
THIS DRAWING CONTAINS PROPRIETARY INFORMATION AND SHALL NOT BE USED OR DISCLOSED WITHOUT PRIOR WRITTEN AUTHORIZATION.				TITLE:			
				SDS36010 CONTROL PANEL LAYOUT			
				SIZE	DWG NO.	PART NO.	REV
B	4396	SDS36010					
SCALE	NONE	SHEET		2 OF 2			



**Xylem Inc.**  
 2881 East Bayard Street Ext.  
 Seneca Falls, NY 13148  
 Phone: (800) 453-6777  
 Fax: (888) 322-5877  
[www.xylem.com/bellgossett](http://www.xylem.com/bellgossett)