

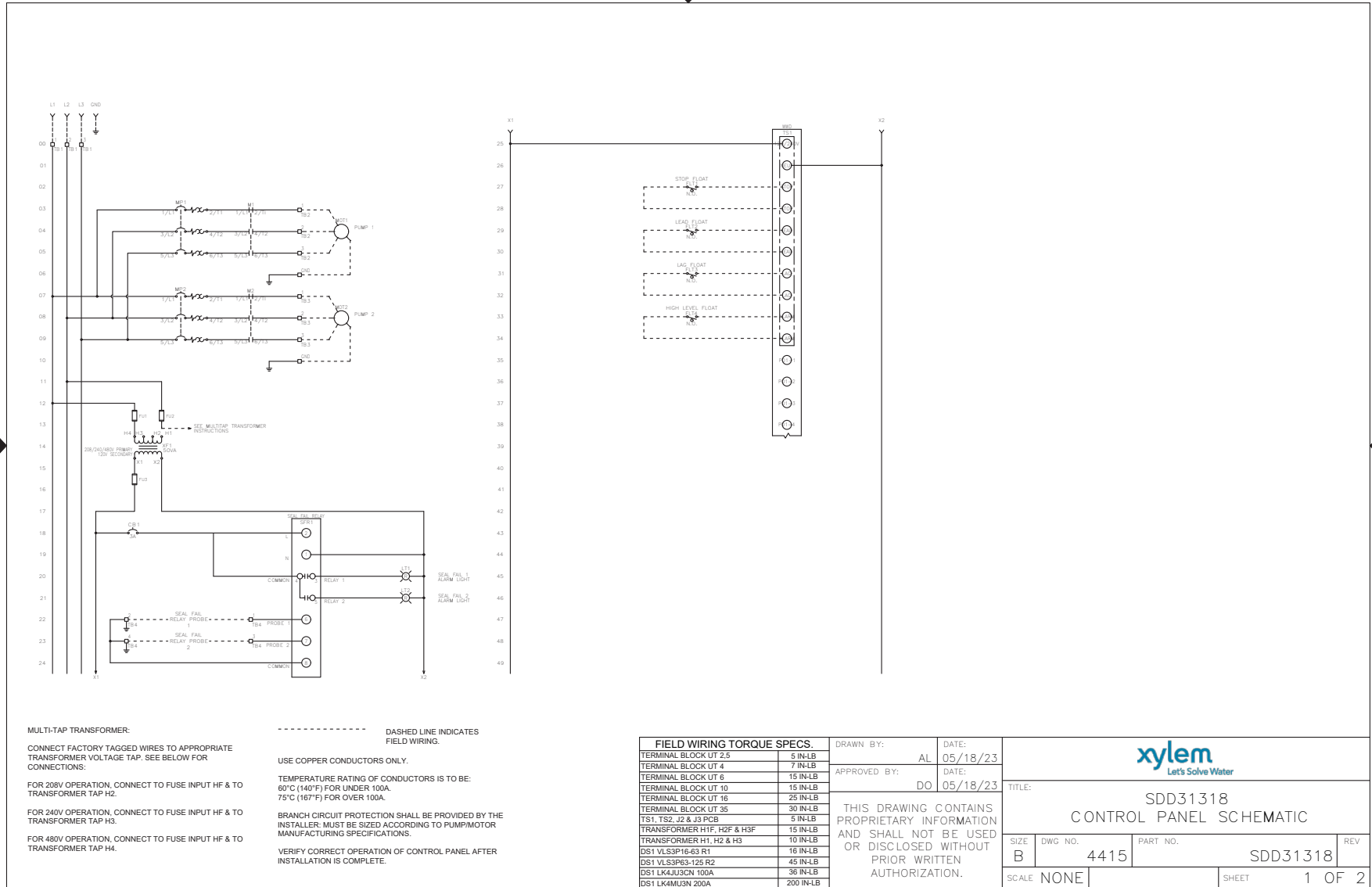
# 3DWS/4DWS Duplex SDD31318

## Control Panel Schematic and Layout

### CONTROL PANEL SCHEMATIC

FNAME: SDD31318

REVDATE: 0523



**MULTI-TAP TRANSFORMER:**

CONNECT FACTORY TAGGED WIRES TO APPROPRIATE TRANSFORMER VOLTAGE TAP. SEE BELOW FOR CONNECTIONS:

FOR 208V OPERATION, CONNECT TO FUSE INPUT HF & TRANSFORMER TAP H2.

FOR 240V OPERATION, CONNECT TO FUSE INPUT HF & TRANSFORMER TAP H3.

FOR 480V OPERATION, CONNECT TO FUSE INPUT HF & TRANSFORMER TAP H4.

----- DASHED LINE INDICATES FIELD WIRING.

USE COPPER CONDUCTORS ONLY.

TEMPERATURE RATING OF CONDUCTORS IS TO BE: 90°C (194°F) FOR UNDER 100A, 75°C (167°F) FOR OVER 100A.

BRANCH CIRCUIT PROTECTION SHALL BE PROVIDED BY THE INSTALLER. MUST BE SIZED ACCORDING TO PUMPMOTOR MANUFACTURING SPECIFICATIONS.

VERIFY CORRECT OPERATION OF CONTROL PANEL AFTER INSTALLATION IS COMPLETE.

DRAWN BY: AL DATE: 05/18/23  
APPROVED BY: DO DATE: 05/18/23

THIS DRAWING CONTAINS PROPRIETARY INFORMATION AND SHALL NOT BE USED OR DISCLOSED WITHOUT PRIOR WRITTEN AUTHORIZATION.



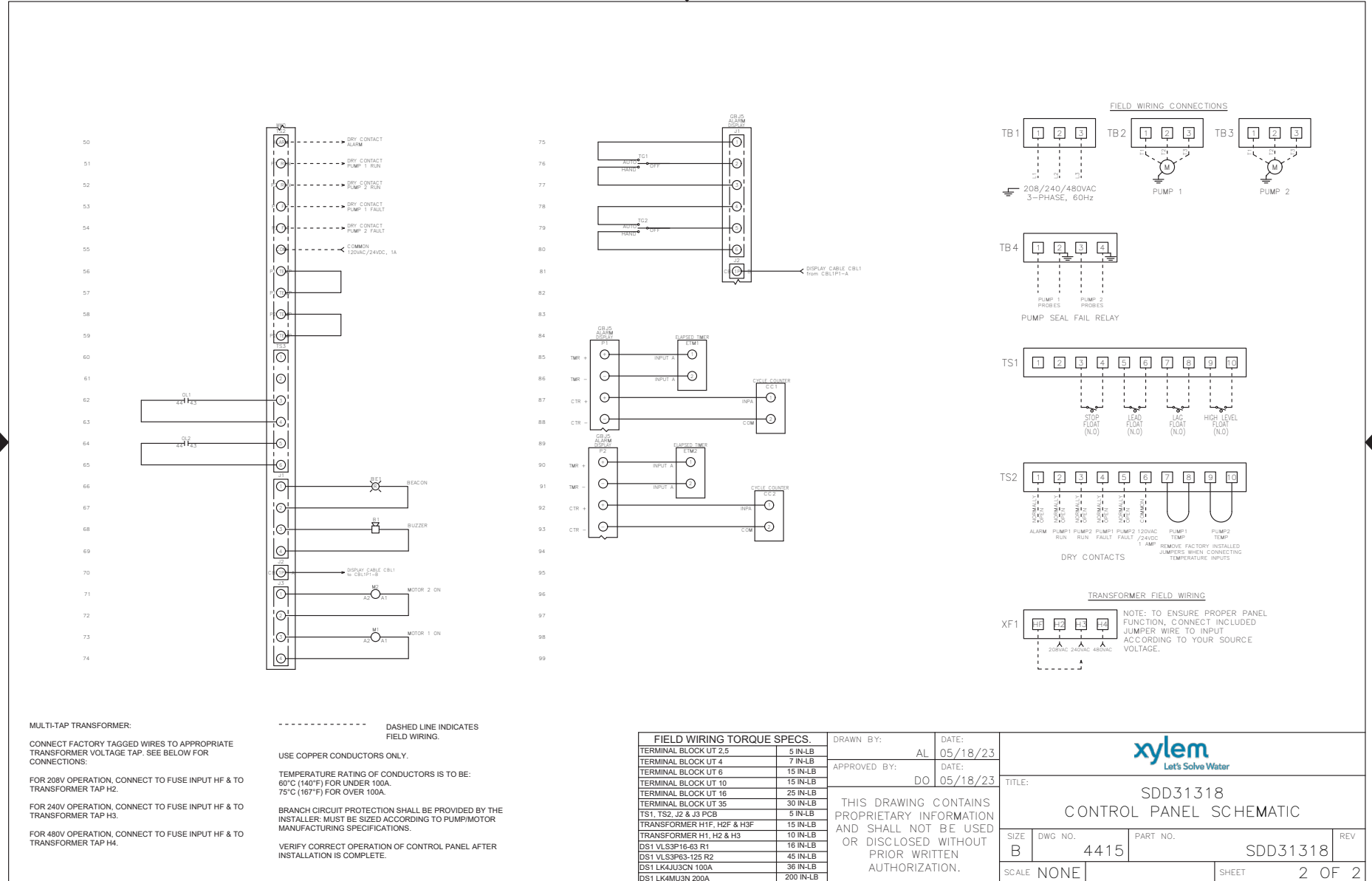
TITLE: SDD31318 CONTROL PANEL SCHEMATIC			
SIZE: B	DWG NO: 4415	PART NO: SDD31318	REV: 001
SCALE: NONE	SHEET: 1 OF 2		

# CONTROL PANEL SCHEMATIC

BGSDD31318 R1

FNAME: SDD31318

REVDATE: 0523



**MULTI-TAP TRANSFORMER:**

CONNECT FACTORY TAGGED WIRES TO APPROPRIATE TRANSFORMER VOLTAGE TAP. SEE BELOW FOR CONNECTIONS:

FOR 208V OPERATION, CONNECT TO FUSE INPUT HF & TO TRANSFORMER TAP H2.

FOR 240V OPERATION, CONNECT TO FUSE INPUT HF & TO TRANSFORMER TAP H3.

FOR 480V OPERATION, CONNECT TO FUSE INPUT HF & TO TRANSFORMER TAP H4.

----- DASHED LINE INDICATES FIELD WIRING.

USE COPPER CONDUCTORS ONLY.

TEMPERATURE RATING OF CONDUCTORS IS TO BE: 60°C (140°F) FOR UNDER 100A, 75°C (167°F) FOR OVER 100A.

BRANCH CIRCUIT PROTECTION SHALL BE PROVIDED BY THE INSTALLER; MUST BE SIZED ACCORDING TO PUMP/MOTOR MANUFACTURING SPECIFICATIONS.

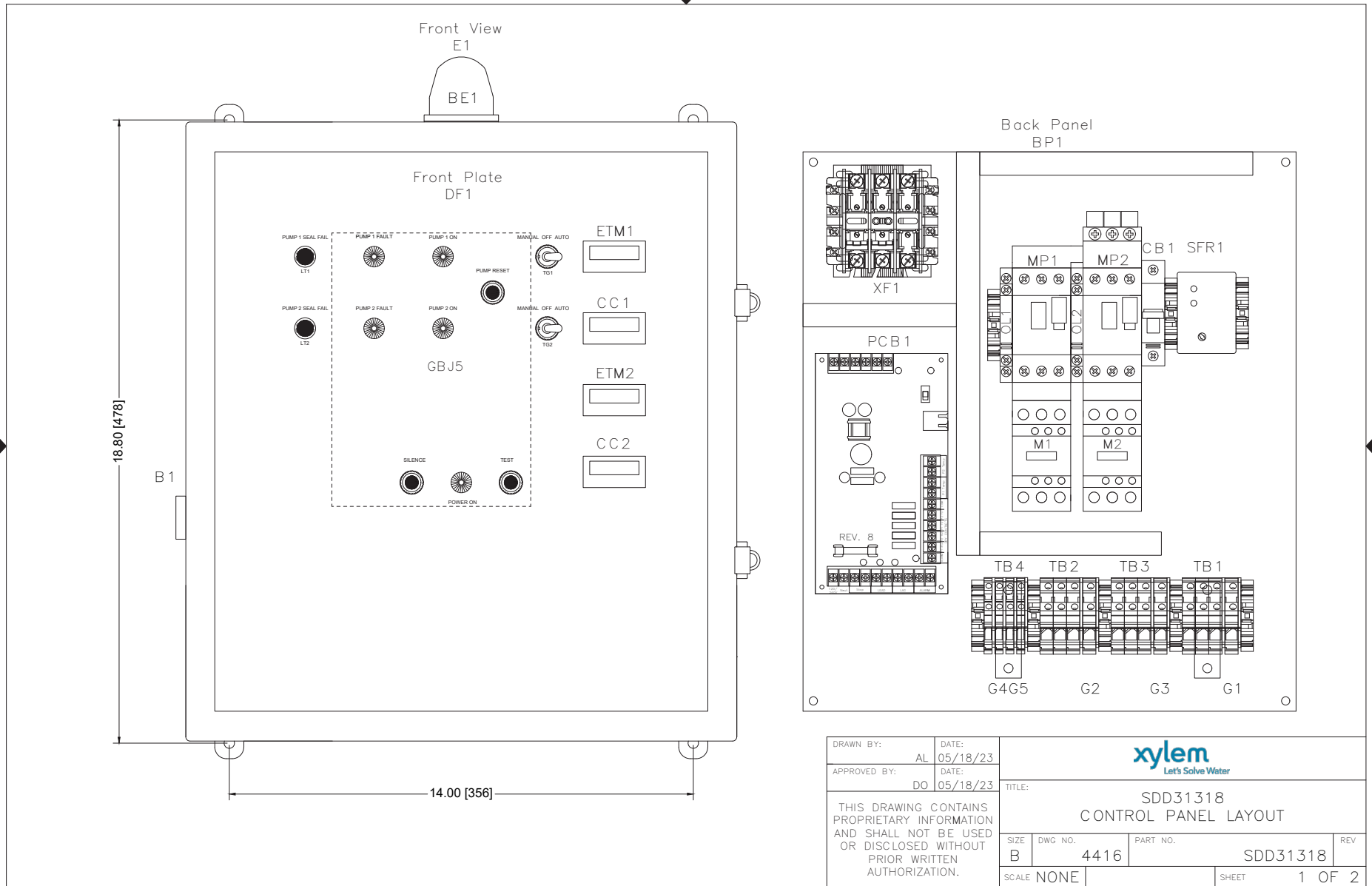
VERIFY CORRECT OPERATION OF CONTROL PANEL AFTER INSTALLATION IS COMPLETE.

# CONTROL PANEL LAYOUT

BGSDD31318 R1

FNAME: SDD31318

REVDATE: 0523



DRAWN BY:	AL	DATE:	05/18/23
APPROVED BY:	DO	DATE:	05/18/23



THIS DRAWING CONTAINS PROPRIETARY INFORMATION AND SHALL NOT BE USED OR DISCLOSED WITHOUT PRIOR WRITTEN AUTHORIZATION.

TITLE: SDD31318 CONTROL PANEL LAYOUT			
SIZE	DWG NO.	PART NO.	REV
B	4416	SDD31318	
SCALE	NONE	SHEET	1 OF 2


# CONTROL PANEL LAYOUT

FNAME: SDD31318

REVDATE: 0523

QTY	MANUFACTURER	DESCRIPTION	PART NUMBER	REF.
1	Saginaw	P.C. Nema 4X Enclosure 18x16x10	H181610HCLL	E1
1	Integra	Hinge Kit	US0PK-P909	N/A
1	All-Spec	Dead Front	624P	DF1
1	All-Spec	Back Panel	625	BP1
1	Ingram	Beacon	R10-SM	BE1
1	Ingram	Buzzer	PB-024-AD	B1
2	VCC	Red Light 125V	1050QC1	LT1-2
1	See Water	Display Board	GBJ5	GBJ5
5	LEDTRONICS	White Lense	LENS-LCD780-CW F	N/A
2	See Water	Flat Cable Assembly	IDC-25MB	N/A
2	Molex	4 Pin Connector	09-50-3041	N/A
1	Molex	6 Pin Connector	09-50-3061	N/A
1	See Water	Power Circuit Board	WWD	PCB1
2	Carling	HOA Toggle Switch	6FC57-73	TG1,2
1	Schneider	Multitap Transformer 50VA	9070TF50D20	XF1
2	Mersen	ATQR 3/10A Fuse	ATQR-3/10A	XF1
1	Mersen	TRM 6/10A Fuse	TRM-6/10A	XF1
2	Schneider	Motor Protector	GV2ME20	MP1-2
2	Schneider	Side Mount Auxiliary	GVAN11	OL1-2
2	Schneider	Contactora	LC1D18JL	M1-2

QTY	MANUFACTURER	DESCRIPTION	PART NUMBER	REF.
2	Schneider	GV2 Combination Block	GV2AF3	N/A
1	Schneider	GV2 BusBar	GV2G254	N/A
1	Schneider	Top Feed Terminal Block	GV1G09	N/A
1	Schneider	Circuit Breaker 3A 1 Pole	M9F22103	CB1
1	Macromatics	Seal Fail Dual Channel Relay	SFP120C100	SFR1
1	Macromatics	8 Pin Socket	70169-D	SFR1
2	Trumeter	Elapsed Time Meter	6320-2500-0000	ETM1-2
2	Trumeter	Cycle Counter	6300-2500-0000	CC1-2
2	Phoenix Contact	Terminal Block UT-4	3044102	TB4
2	Phoenix Contact	Terminal Block UT-4-PE	3044128	G4-5
9	Phoenix Contact	Terminal Block UT-10	3044160	TB1
3	Phoenix Contact	Terminal Block UT-10-PE	3044173	G1
8	Phoenix Contact	End Stop	3022218	N/A
10	Phoenix Contact	End Cover UT-2.5-10	3047028	N/A
2	Altech	Angled Mounting Bracket	CA603	N/A
4	See Water	N.O. Narrow Angle Floats 50'	FPC0N50	N/A
1	UL	508A UL Label	N/A	N/A

DRAWN BY:	AL	DATE:	05/18/23	 Let's Solve Water	
APPROVED BY:	DO	DATE:	05/18/23		
THIS DRAWING CONTAINS PROPRIETARY INFORMATION AND SHALL NOT BE USED OR DISCLOSED WITHOUT PRIOR WRITTEN AUTHORIZATION.				TITLE:	SDD31318 CONTROL PANEL LAYOUT
				SIZE	DWG NO.
B		4416	SDD31318		
SCALE	NONE		SHEET	2 OF 2	



**Xylem Inc.**  
 2881 East Bayard Street Ext.  
 Seneca Falls, NY 13148  
 Phone: (800) 453-6777  
 Fax: (888) 322-5877  
[www.xylem.com/bellgossett](http://www.xylem.com/bellgossett)