



# TECHNOFORCE™ e-MTV

## Packaged Booster System



**Bell & Gossett**  
a xylem brand

# Introducing **TECHNOFORCE** e-MTV Packaged Booster System from Bell & Gossett

## Features that make a difference

- 2-3 pump configurations available
- e-SV stainless steel vertical multistage pumps
- Up to 950 GPM
- 208-230, 460, 575 Volt premium efficient motors
- 304 stainless steel grooved manifolds
- UL type 1 control panel
- 7" color touchscreen interface
- Individual drive circuit breaker
- Lead/lag alternation
- No flow shutdown
- Pipe fill mode
- Trending log: run time, pressure and flow

## Standard options

- Manifold flanges
- Optional low inlet pressure switch (ship loose)
- Alarm horn
- MODBUS® RTU/TCP, BACnet MSTP/IP
- Thermal purge
- System protections: pump/VFD fault, loss of prime, transducer fault, end of curve protection, high and low pressure

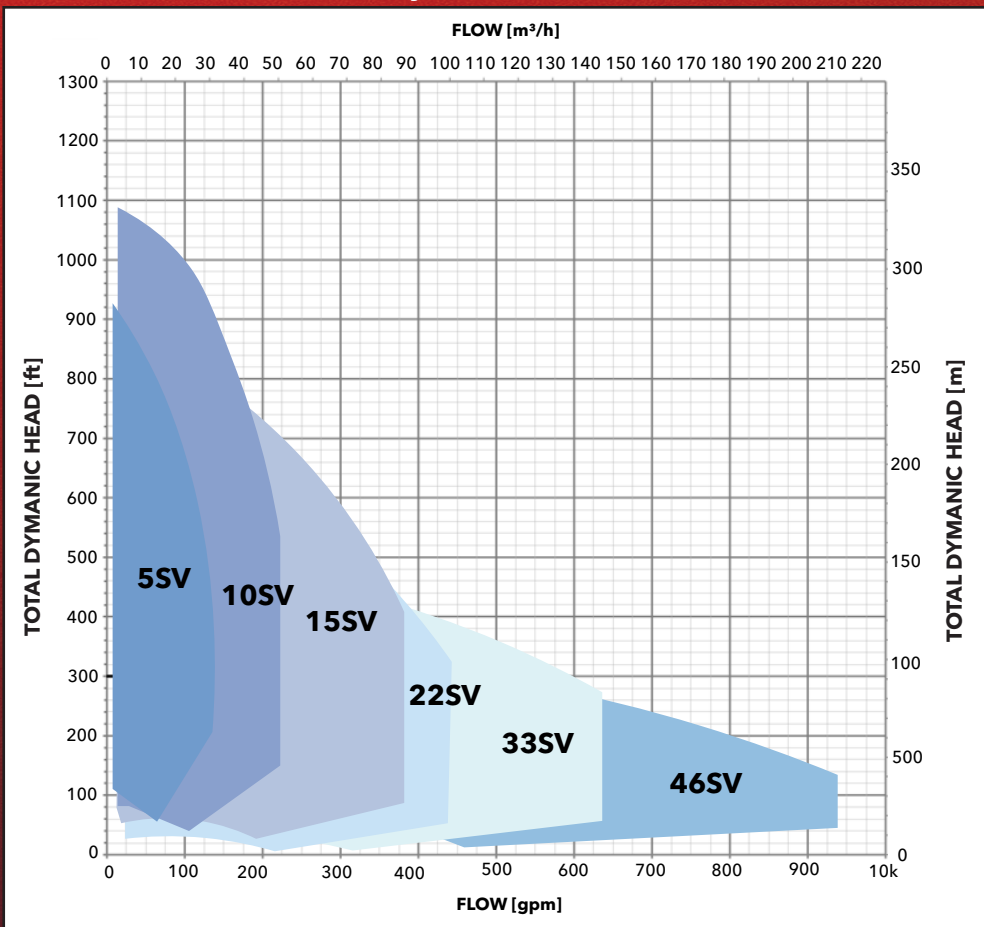
## General

- NSF/ANSI 61 Annex G certified
- UL/cUL category QCZJ package Pump system listing
- UL508A control panel listing
- BTL certified

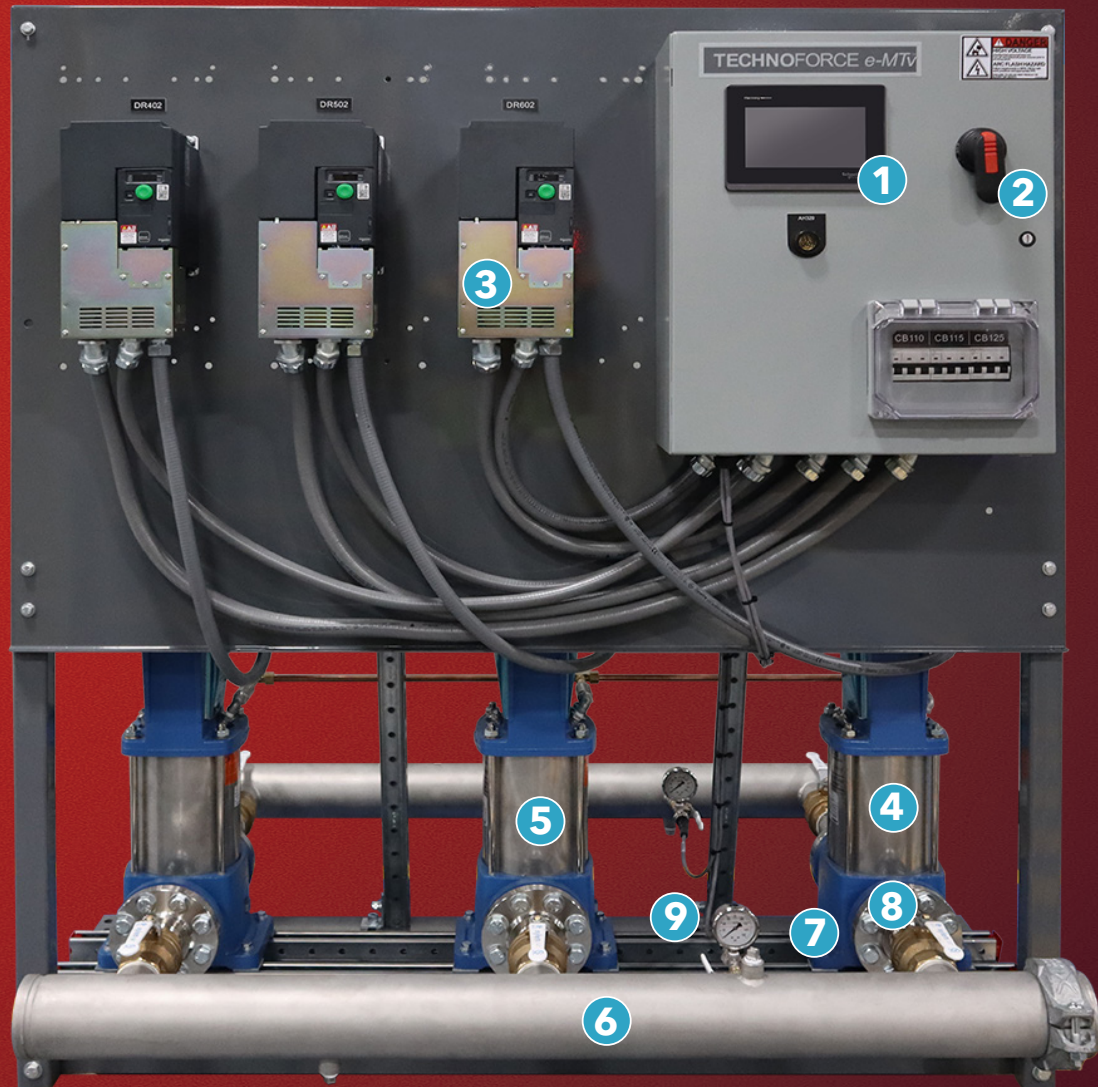
## Typical applications

- High rise buildings
- Hospitals
- Office building
- Schools
- Sports arenas
- Industrial

**TECHNOFORCE e-MTV family curves**



NOTE: Specifications / equipment are subject to change without notice. Verify with factory.

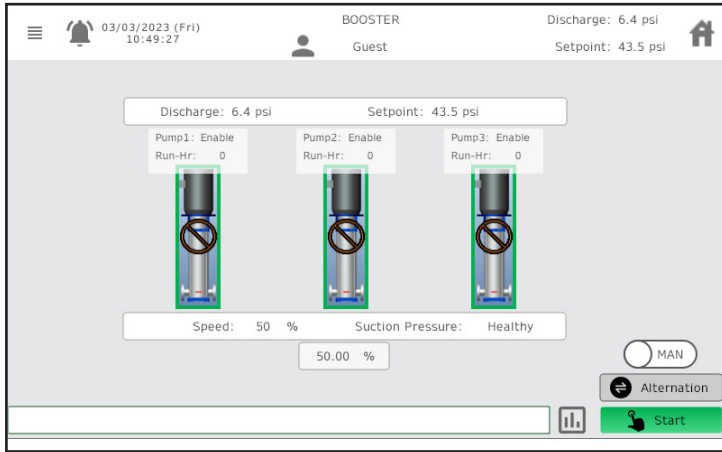


1. e-MTV Pump Logic Controller with UL Type 1 enclosure and 7" full color touchscreen interface. Intuitive and simplified user interface for ease of commissioning and troubleshooting
2. Station disconnect switch
3. VFD's with individual circuit breakers permits continued operation and serviceability while maintaining partial or full flow
4. Premium efficiency motors (not shown)
5. e-SV vertical multistage pumps
6. 304 stainless steel suction and discharge manifolds grooved end (optional flanges)
7. 2.5" pressure gauges
8. NSF-61 certified isolation valves
9. Silent Type 316 stainless steel check valves

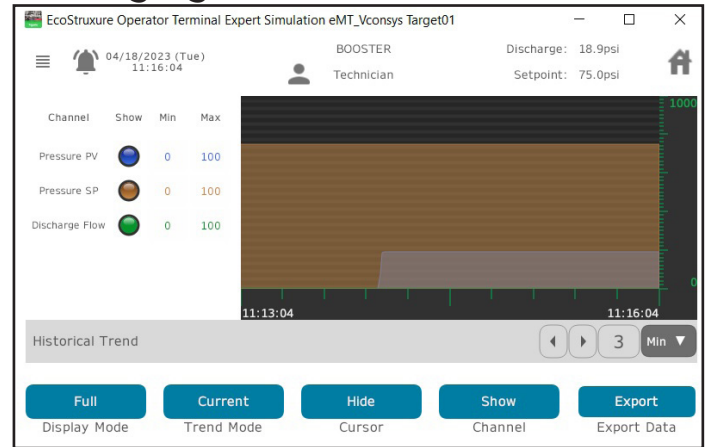
For complete system capabilities and detailed specifications go to [www.xylem.com/bellgossett](http://www.xylem.com/bellgossett)

# TECHNOFORCE Status At-a-Glance

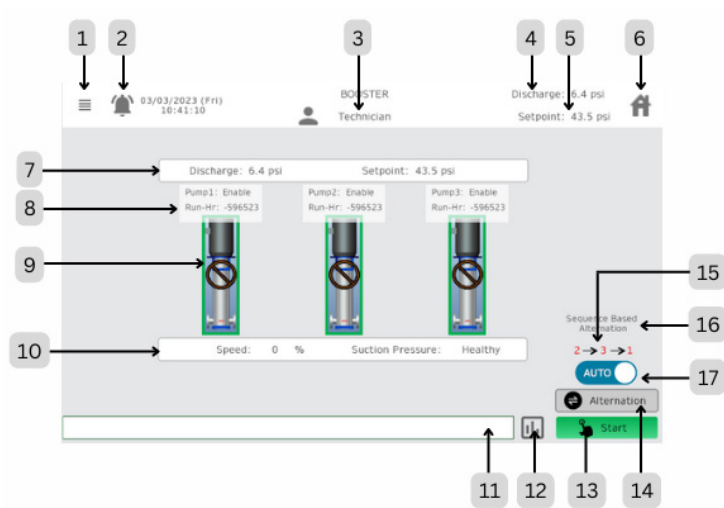
## Home screen



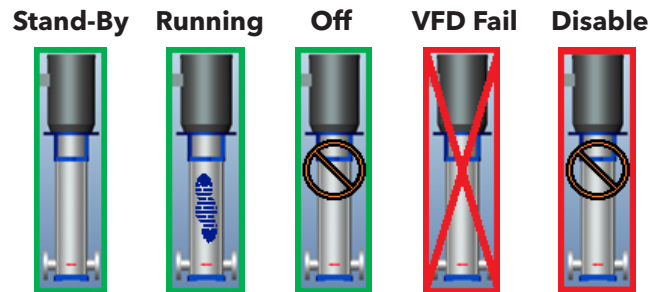
## Trending log screen



For complete system capabilities and detailed specifications go to [www.xylem.com/goulds](http://www.xylem.com/goulds)



- |                                   |                                    |
|-----------------------------------|------------------------------------|
| 1. Menu button                    | 11. Alarm status screen            |
| 2. Alarm screen navigation button | 12. Trend screen navigation button |
| 3. Current user login status      | 13. System start/stop button       |
| 4. Current discharge pressure     | 14. Manual alternation             |
| 5. Current PV setpoint            | 15. Pump sequence                  |
| 6. Home button                    | 16. Alternation method selected    |
| 7. Discharge bar                  | 17. System auto/manual button      |
| 8. Pump information               |                                    |
| 9. Pump status                    |                                    |
| 10. Pump speed                    |                                    |



We value your feedback. Please take our 3 question survey at [bellgossett.com/survey](http://bellgossett.com/survey) to let us know how we are doing.

### Xylem Product Cybersecurity

Xylem values your system security and the availability of your critical services. For more information on Xylem cybersecurity practices or to contact the cybersecurity team please visit [xylem.com/security](http://xylem.com/security).



Xylem Inc.  
2881 East Bayard Street Ext., Suite A  
Seneca Falls, NY 13148  
Phone: (844) XYL-PUMP [844-995-7867]  
Fax: (888) 322-5877  
[www.xylem.com/bellgossett](http://www.xylem.com/bellgossett)

Xylem, Bell & Gossett and TECHNOFORCE are trademarks or registered trademarks of Xylem Inc. or one of its subsidiaries. MODBUS is a registered trademark of Schneider Electric USA, Inc. All other trademarks or registered trademarks are property of their respective owners.

© 2023 Xylem Inc. BGSSe-MTV-120020 R1 May 2023

To learn more about TECHNOFORCE e-MTV

