



TECHNOFORCE™ HVAC PACKAGE SYSTEM



Bell & Gossett
a xylem brand

TECHNOFORCE HVAC Package System

The TechnoForce HVAC Package System is configurable with either 2 or 3 Bell & Gossett e-1531 pumps. System control is sensorless with each package pre-programmed at our facility. Optional flow splits ensure complete system redundancy and peace of mind for your HVAC pumping needs.

Features & Benefits

Exceptional System Performance:

- Constructed of up to 3 Xylem pumps capable of delivering water to the required heights
- Each pre-programmed station is fully tested for flow and pressure up to 175 PSI boost for trusted performance
- HVAC package system is designed with driver and pump failure protection to help keep the system running

Ease of Use:

- BMS communication saves time by providing system performance data remotely
- 5.7" LED color touchscreen interface provides for smoother navigation of the system and unmatched data displayed
- Stainless steel grooved manifolds and optional flanges simplify installation

Applications:

- High Rise Buildings
- Hospitals
- Industrial
- Office Buildings
- Schools
- Sports Arenas

Pump System Listing:

- NSF/ANSI 61 Annex G Listing
- UL/cUL Category QCZJ Package
- UL508A Control Panel Listing
- ASHRAE 90.1-2010 Compliant

Additional Features:

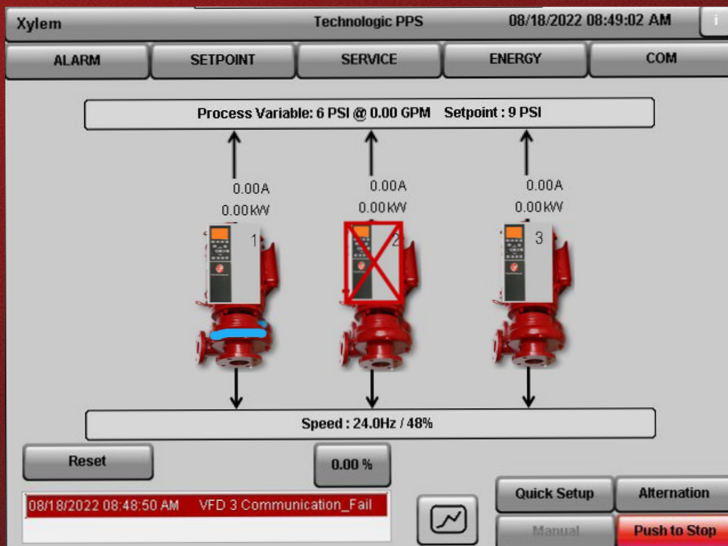
- 2-3 Pump Configuration
- Up to 2280 GPM (2 pumps)
3400 GPM (3 pumps)
- Up to 110 Feet of Head
- 230, 460, 575V Premium Efficient Motors Available
- 304 SS Grooved Manifolds
- UL Type 1 Control Enclosures and UL Type 12 VFD Enclosures are Standard
- Trending Screen
- Dynamic Flow Loss Compensation
- BACnet MSTP or IP; MODBUS® Serial or TCP



Features that make a difference

1. Technologic PPS Pump Logic Controller with UL Type 1 enclosure - The 5.7" LED color touchscreen interface provides unmatched data displayed on a single intuitive screen, including a trending log that covers power, pressure, set point, speed and flow.
2. Main disconnect switch allows for ease of serviceability
3. UI Type 12 Technologic VFD's with individual fused disconnect switches permit continued operation and serviceability of pump and motor while maintaining partial or full flow.
4. Premium efficiency motors ensure DOE requirements are met (not shown)
5. Pump options of e-1531 pumps deliver the maximum performance needed
6. 304 SS grooved manifolds allow for a quicker connection during installation (flanges optional)
7. A 2.5" pressure gauge allows for greater visibility
8. NSF-61 certified isolation valves aid in serviceability of a single pump
9. Silent type check valves quietly keep water flowing in the right direction

TechnoForce Home Screen



Stand-By

Off

Running

VFD Fail



Contact your local Bell & Gossett Representative for more information and system design.

www.bellgossett.com/sales-service



We value your feedback. Please take our 3 question survey at bellgossett.com/survey to let us know how we are doing.



Learn more about
TECHNOFORCE HVAC
Package System

Xylem Product Cybersecurity

Xylem values your system security and the availability of your critical services. For more information on Xylem cybersecurity practices or to contact the cybersecurity team please visit xylem.com/security.



Xylem Inc.
2881 East Bayard Street Ext., Suite A
Seneca Falls, NY 13148
Phone: (844) XYL-PUMP [844-995-7867]
Fax: (888) 322-5877
www.xylem.com/bellgossett

Xylem and Bell & Gossett are trademarks of Xylem Inc. or one of its subsidiaries.
MODBUS is a registered trademark of Schneider Electric USA, Inc. All other trademarks or registered trademarks are property of their respective owners.
© 2022 Xylem Inc. BGHVS-12001-22 R1 September 2022