

CLARKE FIRE PUMP DRIVERS
EPA NSPS TIER 3 ENGINE MODELS
HSC APPLICATIONS

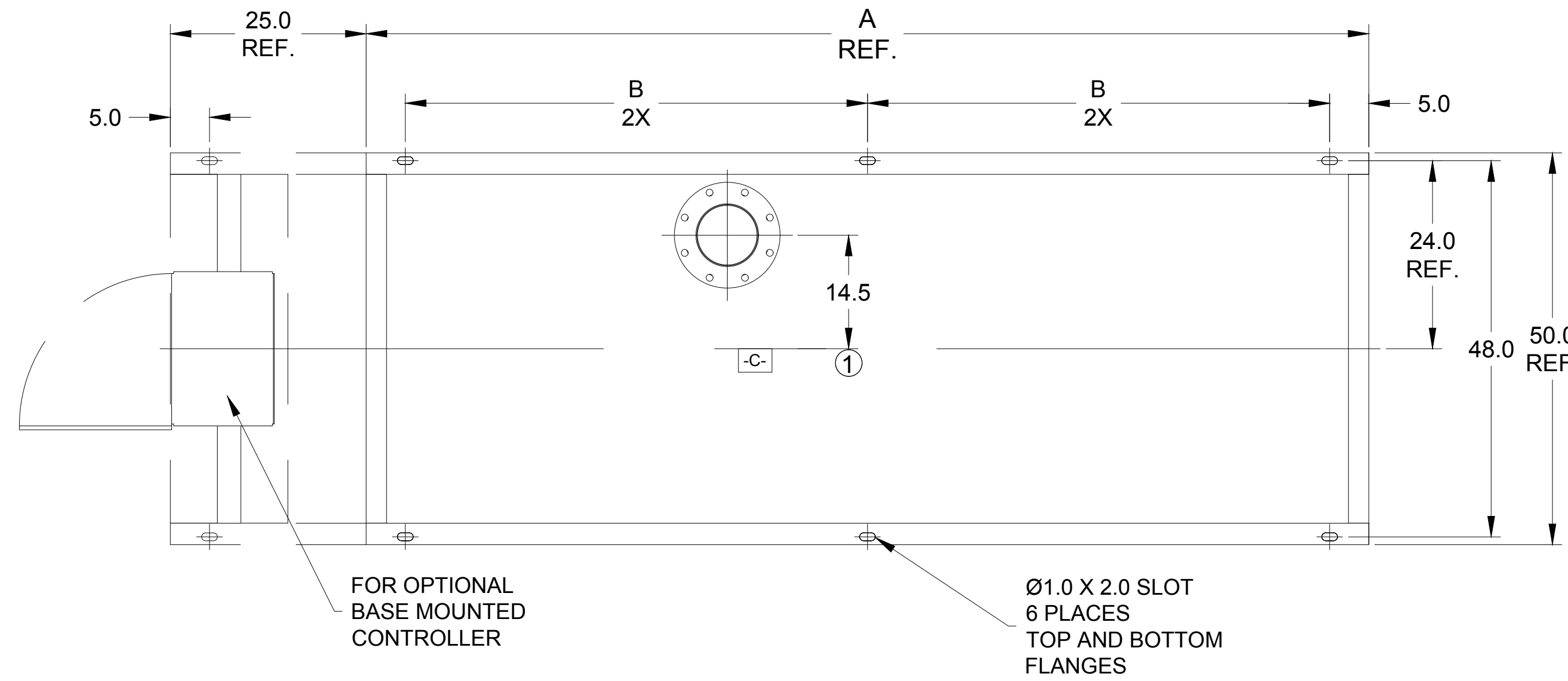
- A- - MOUNTING FACE OF FLYWHEEL
- B- - ENGINE CRANKSHAFT HORIZONTAL CENTERLINE
- C- - ENGINE CRANKSHAFT VERTICAL CENTERLINE
- D- - PUMP SHAFT HORIZONTAL CENTERLINE

NON-LISTED DRIVESHAFTS	
ENGINE MODEL	DRIVESHAFT MODEL
C18H0-UFAD10,18,20,28,30,38,40,48,50**,68,70**	SC2160A
C18H0-UFAD50*,58,70*,78	SC2390A

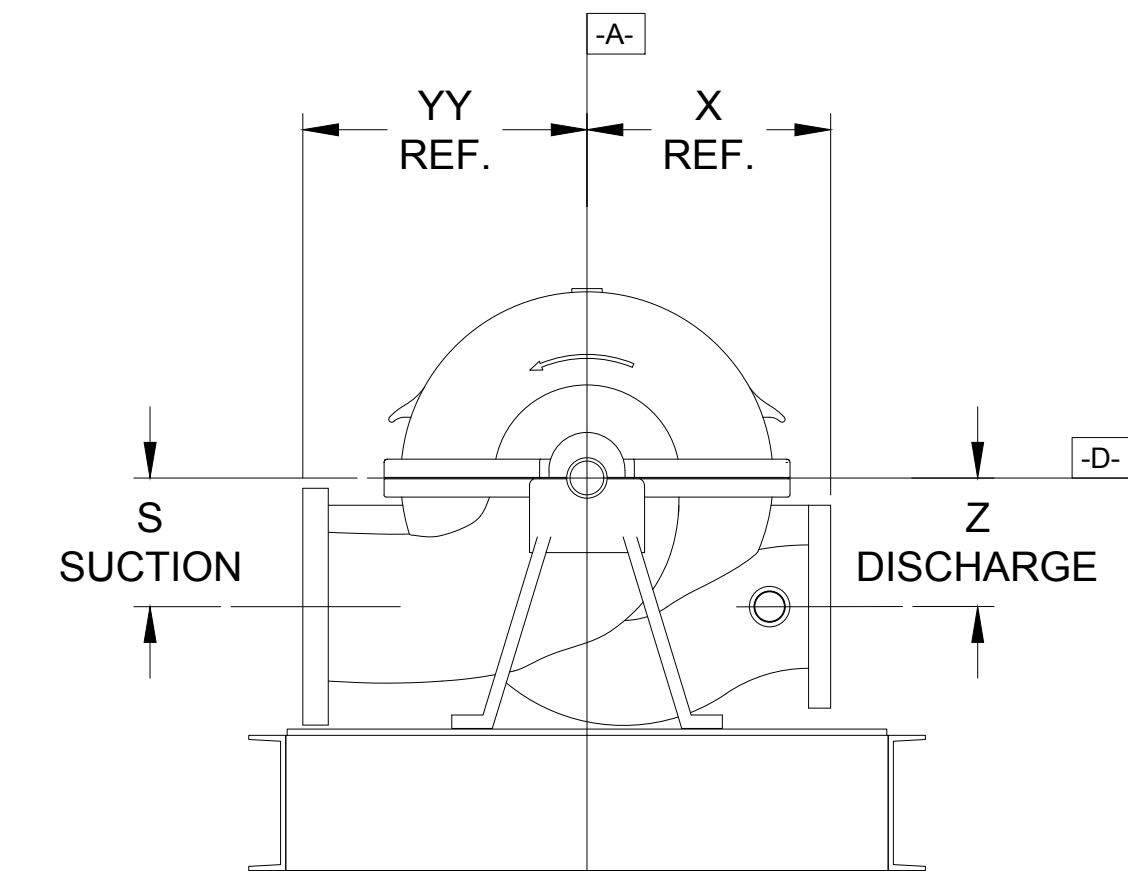
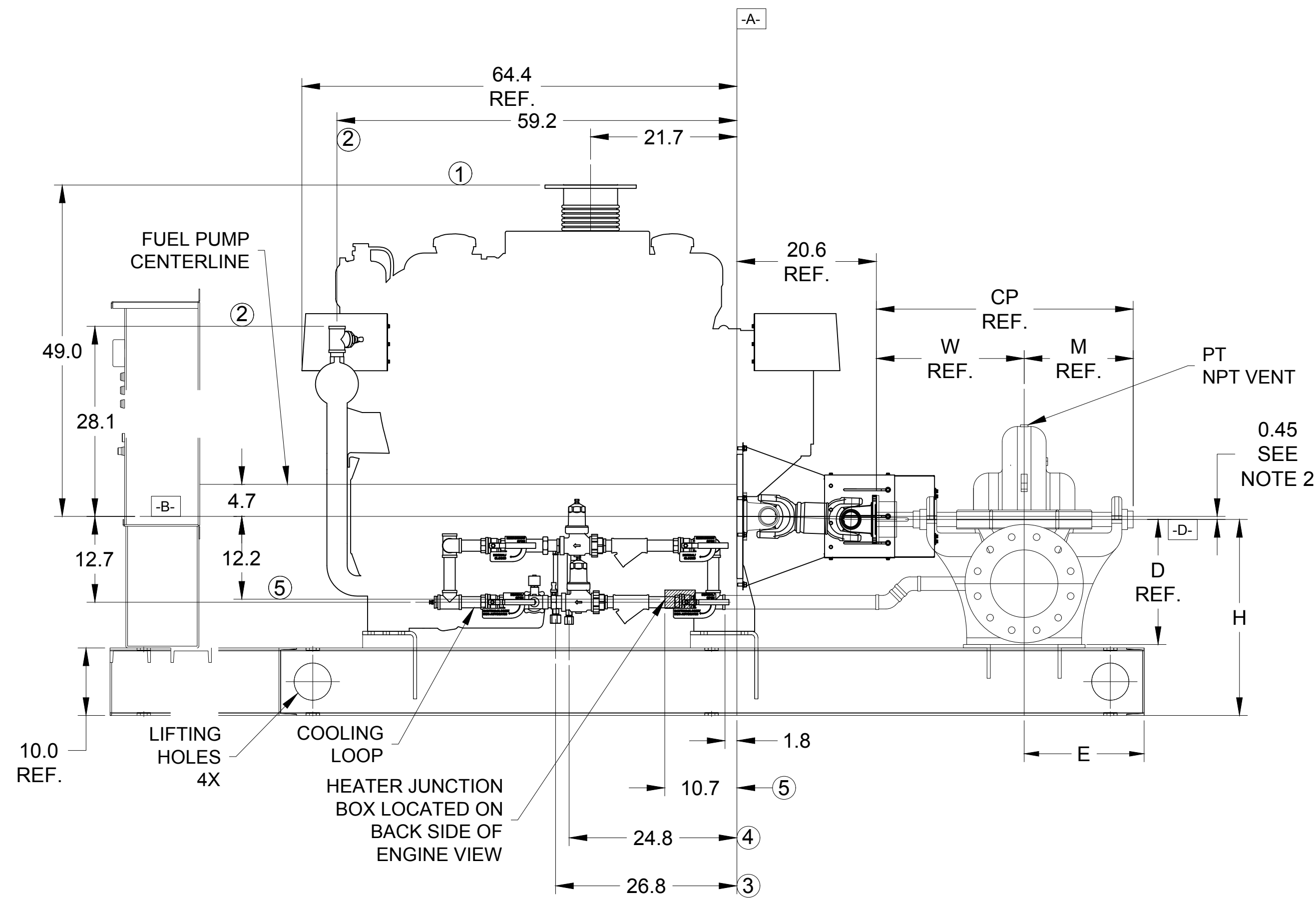
*1900 RPM ONLY, **2100 RPM ONLY

NOTES:

- GENERAL TOLERANCE: UNLESS OTHERWISE SPECIFIED, ALL DIMENSIONS ARE IN INCHES AND VARY 0.38".
- THE DRIVE SHAFT IS DESIGNED TO OPERATE AT A 2° ANGLE WITH THE INPUT AND OUTPUT SHAFTS IN PARALLEL. THE ENGINE CRANKSHAFT IS TO BE SET WITH A PARALLEL OFFSET OF 0.45 ± 0.15 INCHES VERTICALLY ABOVE THE PUMP SHAFT AND 0.00" ± 0.15 INCH PARALLEL OFFSET HORIZONTALLY RIGHT OR LEFT OF THE PUMP SHAFT. REFER TO THE CERTIFIED DRIVESHAFT INSTRUCTIONS MANUAL FOR ALIGNMENT INSTRUCTIONS.
- BASE MUST BE COMPLETELY FILLED WITH GROUT PER NFPA 20.
- PUMP IS CW (CLOCKWISE) ROTATION WHEN VIEWED FROM THE COUPLING END.
- SUCTION AND DISCHARGE FLANGES DRILLED PER ANSI B16.1 (IF APPLICABLE).
- RAW WATER OUTLET SIZE VARIES BASED UPON SITE CONDITIONS. DEFAULT SIZE: 1-1/2" NPT
- CAUTION: ALL PLUMBING MUST BE SUPPORTED AND/OR ISOLATED SO THAT NO WEIGHT OR STRESS IS APPLIED TO ANY ENGINE COMPONENT.
- CAUTION: SPREADER BARS REQUIRED TO MOVE PACKAGE. DAMAGE DUE TO IMPROPER HANDLING IS NOT WARRANTABLE.



ITEM NO.	DESCRIPTION	CONNECTION SIZE
①	EXHAUST OUTLET CONNECTION	8" 150# FLG.
②	RAW WATER OUTLET	SEE NOTE 6.
③	FUEL SUPPLY CONNECTION	3/4" NPTF
④	FUEL RETURN CONNECTION	1/2" NPTF
⑤	HEATER JUNCTION BOX	VOLTAGE REQUIREMENTS: AC CONNECTION HEATER 3500 WATTS STD- 230 VAC ±5%-10%



PUMP TYPE	PUMP SIZE		DIMENSIONS												
	SUCT.	DISCH.	A	B	H	E	M	W	CP	D	YY	X	S	Z	PT
8100 SERIES															
10x8x20 F	10	8	128.0	59.0	34.0	17.4	17.0	22.6	39.6	20.0	20.0	18.0	14.0	14.0	0.5
8150 SERIES															
16x10x22 F	16	10	138.0	64.0	35.0	20.2	24.4	29.8	54.3	24.0	29.0	24.0	14.0	14.0	1.0
9100 SERIES															
12x8x21 F	12	8	138.0	64.0	33.0	21.8	21.8	28.3	50.0	19.0	21.0	21.0	12.0	12.0	1.0
14x10x20 F	14	10	138.0	64.0	36.0	19.5	23.8	30.5	54.3	21.0	21.0	19.0	13.0	13.0	1.0

Certified for: Approval Construction By: _____ Date: _____ Listed: UL FM

Project:	Capacity:	Engine Supplier: CLARKE
Customer:	Total Pressure:	Engine Model:
Item / P.O. No.:	Pump Speed:	Engine Preheater Voltage:
Quote No.:	Power:	Pump Serial No.:
Pump Model:	Rotation: CLOCKWISE (Right Hand)	SO No.:

C137767 RevA
 11APR19