

SUPERSEDES ALL PREVIOUS ISSUES

**CONSTRUCTION:** 304 STAINLESS STEEL  
**NOMINAL FLOW:** 9 GPM  
**CAPACITIES:** 2 - 12 GALLONS PER MINUTE  
**HEADS:** 13 - 372 PSI TDH  
**STAGING:** 2 - 30  
**MINIMUM FLOW:** 2 GPM  
**MAXIMUM WORKING PRESSURE:** 360 PSI (25 BAR) FOR THE ANSI FLANGE VERSION  
**TEMPERATURES:** STANDARD LIQUID TEMPERATURES FROM -20°F TO 250°F (-30°C TO 120°C)

**1SV (e-SV)**  
**60 Hz 3500 RPM**

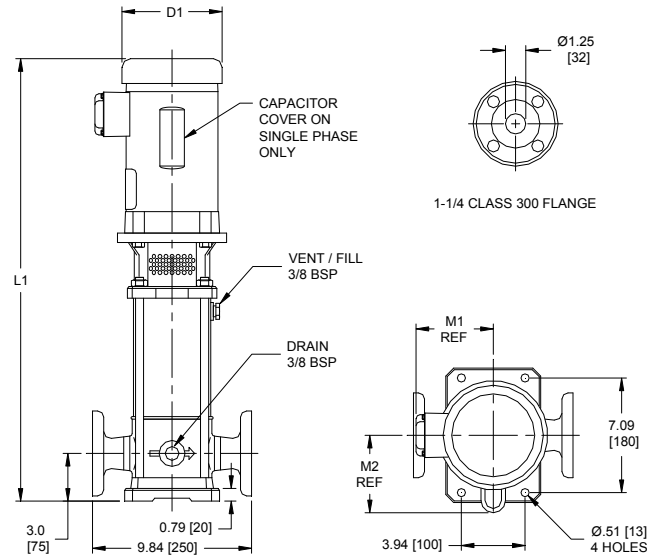
**MOTOR**

- STANDARD NEMA TC FRAME MOTORS IN OPEN DRIP PROOF OR TOTALLY ENCLOSED FAN COOLED ENCLOSURES.
- STANDARD VOLTAGE:
  - SINGLE PHASE: 115-208/230V UP TO 3 HP OR 208-230V FOR 5 HP
  - THREE PHASE, 2 POLE: 208-230/460V, 60 HZ UP 75 HP

COMPONENT	MATERIAL
PUMP BODY	AISI 304 STAINLESS STEEL
IMPELLER	AISI 304 STAINLESS STEEL
DIFFUSER	AISI 304 STAINLESS STEEL
CASING	AISI 316L STAINLESS STEEL
SHAFT	AISI 316 STAINLESS STEEL
ADAPTER	ASTM CLASS 35/40B CAST IRON
BASE	A384.0-F ALUMINUM
COUPLING	A384.0-F ALUMINUM
SEAL PLATE	AISI 316L STAINLESS STEEL
ELASTOMERS	VITON (OPT. EPDM)
COUPLING GUARD	AISI 304 STAINLESS STEEL
SHAFT SLEEVE AND BUSHING	TUNGSTEN CARBIDE
FILL/DRAIN PLUGS	AISI 316 STAINLESS STEEL
TIE RODS	A29 GR. 1045 CARBON STEEL / ZINC PLATED
WEAR RING	PPS
SEAL GLAND	AISI 316 STAINLESS STEEL

MECHANICAL SEAL	CODE NO.	ROTATING FACE 1	STATIONARY FACE 2	ELASTOMERS 3
	0	CARBON	SILICON CARBIDE GRAPHITE FILLED	VITON



STAGE	HP	MOTOR				DIMENSIONS (IN.)								WEIGHT (LBS.)				
		NEMA FRAME				L1				M (REF.)	D1 (MAX.)				PUMP & MOTOR			
		ODP 1Φ	ODP 3Φ	TEFC 1Φ	TEFC 3Φ	ODP 1Φ	ODP 3Φ	TEFC 1Φ	TEFC 3Φ		TEFC 1Φ	ODP 1Φ	TEFC 3Φ	ODP 3Φ	TEFC 1Φ	ODP 1Φ	TEFC 3Φ	ODP 3Φ
5	1/2	56C				21.68		21.81		5.19	6.19				44	44	42	42
7	3/4	56C				24.88	23.25	24.00	23.38	5.19	6.19				54	52	46	46
9	1	56C				26.33	24.83	26.86	24.96	5.74	7.19	6.19			66	58	49	49
11	1 1/2	56C				27.91		28.43		5.74	7.19	6.19			68	60	56	58
13						29.88		30.40		5.74					71	63	59	61
15						31.46		31.98		5.74					73	65	61	63
17	2	56C				33.54		34.42		5.74	7.19	6.19			88	80	70	69
19						35.12		36.00		5.74					90	82	72	71
20						35.91		36.79		6.52					91	83	73	72
22	3	56C				37.87	37.48	39.74	37.46	5.75	7.19	6.62	7.19	7.16	106	91	86	83
24						38.66	38.27	40.53	38.25	5.75					110	95	90	87
26						41.42	41.03	43.29	41.01	6.53					112	97	92	89
28						42.99	42.60	44.86	42.58	6.53					114	99	94	91
30						44.56	44.17	46.43	44.15	7.31					115	100	95	92

**NOT FOR CONSTRUCTION, INSTALLATION OR APPLICATION PURPOSES UNLESS CERTIFIED.**

<b>CERTIFIED FOR:</b>									
<b>CUSTOMER ORDER NO:</b>					<b>IDENTIFICATION NO:</b>				
<b>PUMP DATA</b>		<b>SIZE</b>	<b>MODEL</b>	<b>CURVE NO.</b>	<b>GPM</b>	<b>HEAD (FT)</b>	<b>ROTATION</b>	<b>FLANGES</b>	
<b>MOTOR DATA</b>		<b>HP</b>	<b>RPM</b>	<b>VOLTS</b>	<b>PHASE</b>	<b>HERTZ</b>	<b>FRAME SIZE</b>	<b>SUCTION 300 #</b>	<b>DISCHARGE 300 #</b>
<b>SHOP ORDER:</b>					<b>CERTIFIED BY:</b>				
					<b>DATE</b>				



a xylem brand

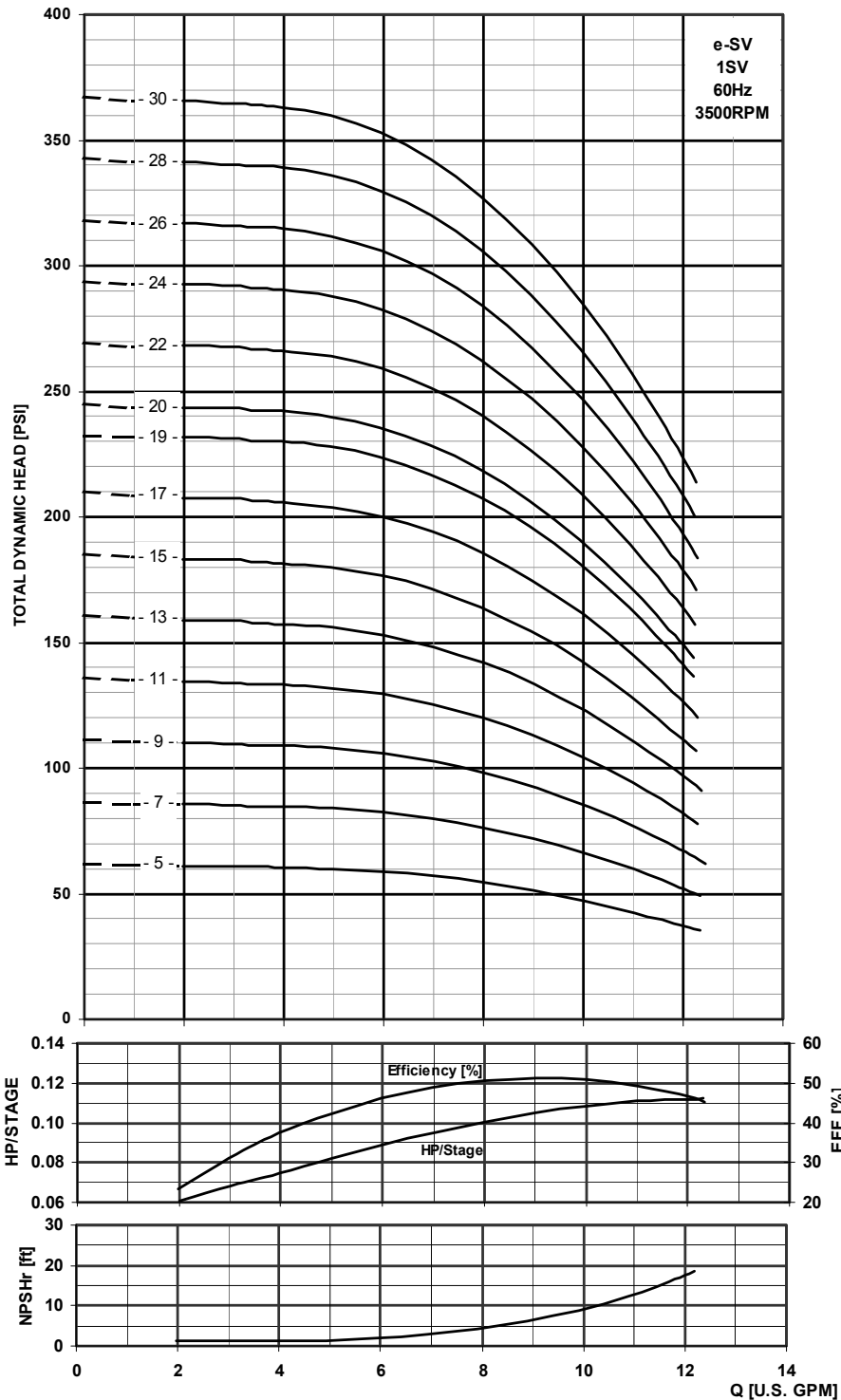
DIMENSIONS AND ENGINEERING DATA  
VERTICAL MULTI STAGE JOCKEY PUMPS  
e-SV SERIES

FP 4.0

PAGE 302

SEPT 2013

SUPERSEDES ALL PREVIOUS ISSUES



NOT FOR CONSTRUCTION, INSTALLATION OR APPLICATION PURPOSES UNLESS CERTIFIED.								
CERTIFIED FOR:								
CUSTOMER ORDER NO:				IDENTIFICATION NO:			FLANGES	
PUMP DATA	SIZE	MODEL	CURVE NO.	GPM	HEAD (FT)	ROTATION	SUCTION 300 #	DISCHARGE 300 #
	HP	RPM	VOLTS	PHASE	HERTZ	CW	ENCLOSURE	
MOTOR DATA						FRAME SIZE		
SHOP ORDER:			CERTIFIED BY:			DATE		

SUPERSEDES ALL PREVIOUS ISSUES

**CONSTRUCTION:** 304 STAINLESS STEEL  
**NOMINAL FLOW:** 15 GPM  
**CAPACITIES:** 3 - 22 GALLONS PER MINUTE  
**HEADS:** 17 - 470 PSI TDH  
**STAGING:** 2 - 30  
**MINIMUM FLOW:** 3 GPM  
**MAXIMUM WORKING PRESSURE:** 360 PSI (25 BAR) FOR THE ANSI FLANGE VERSION  
**TEMPERATURES:** STANDARD LIQUID TEMPERATURES FROM -20°F TO 250°F (-30°C TO 120°C)

**3SV (e-SV)**  
**60 Hz 3500 RPM**

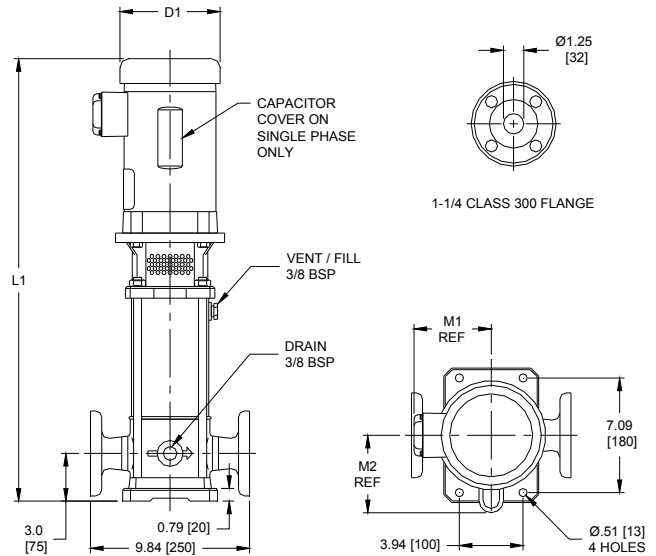
**MOTOR**

- STANDARD NEMA TC FRAME MOTORS IN OPEN DRIP PROOF OR TOTALLY ENCLOSED FAN COOLED ENCLOSURES.
- STANDARD VOLTAGE:
  - SINGLE PHASE: 115-208/230V UP TO 3 HP OR 208-230V FOR 5 HP
  - THREE PHASE, 2 POLE: 208-230/460V, 60 HZ UP 75 HP

COMPONENT	MATERIAL
PUMP BODY	AISI 304 STAINLESS STEEL
IMPELLER	AISI 304 STAINLESS STEEL
DIFFUSER	AISI 304 STAINLESS STEEL
CASING	AISI 316L STAINLESS STEEL
SHAFT	AISI 316 STAINLESS STEEL
ADAPTER	ASTM CLASS 35/40B CAST IRON
BASE	A384.0-F ALUMINUM
COUPLING	A384.0-F ALUMINUM
SEAL PLATE	AISI 316L STAINLESS STEEL
ELASTOMERS	VITON (OPT. EPDM)
COUPLING GUARD	AISI 304 STAINLESS STEEL
SHAFT SLEEVE AND BUSHING	TUNGSTEN CARBIDE
FILL/DRAIN PLUGS	AISI 316 STAINLESS STEEL
TIE RODS	A29 GR. 1045 CARBON STEEL / ZINC PLATED
WEAR RING	PPS
SEAL GLAND	AISI 316 STAINLESS STEEL

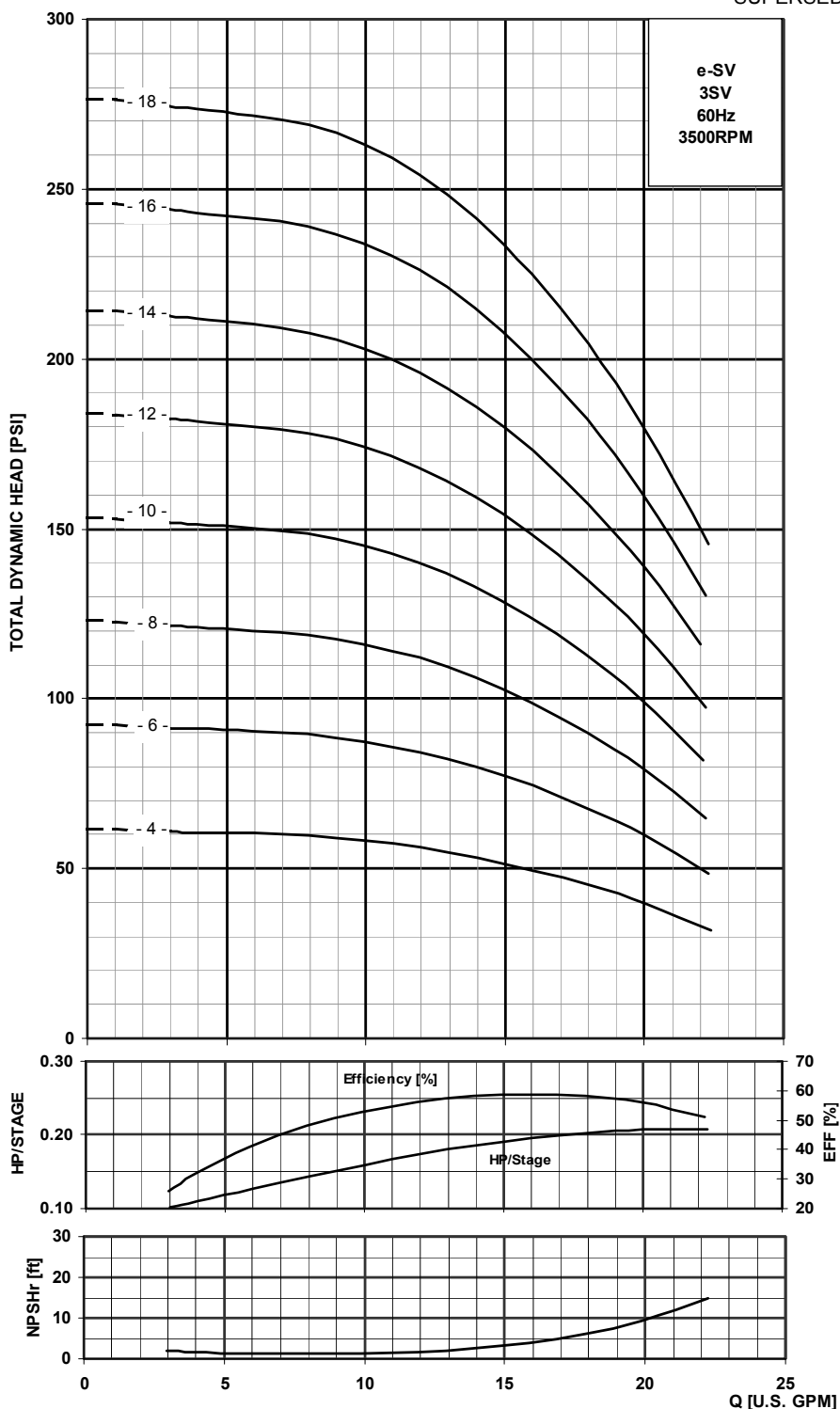
MECHANICAL SEAL			
CODE NO.	ROTATING FACE 1	STATIONARY FACE 2	ELASTOMERS 3
0	CARBON	SILICON CARBIDE GRAPHITE FILLED	VITON



STAGE	HP	MOTOR				DIMENSIONS (IN.)								WEIGHT (LBS.)				
		NEMA FRAME				L1				M (REF.)	D1 (MAX.)				PUMP & MOTOR			
		ODP 1Φ	ODP 3Φ	TEFC 1Φ	TEFC 3Φ	ODP 1Φ	ODP 3Φ	TEFC 1Φ	TEFC 3Φ		TEFC 1Φ	ODP 1Φ	TEFC 3Φ	ODP 3Φ	TEFC 1Φ	ODP 1Φ	TEFC 3Φ	ODP 3Φ
4	3/4	56C				22.52	20.89	21.64	21.02	5.19	6.19				57	55	49	49
6	1	56C				23.97	22.47	24.50	22.60	5.74	7.19	6.19			70	62	53	53
8	1 1/2	56C				25.95		26.47	25.19	5.74	7.19	6.19			73	65	61	63
10	2	56C				28.03		28.91	27.64	5.74	7.19		6.19		86	78	68	67
12	3	56C				30.00	29.61	31.87	29.59	5.75	7.19	6.62	7.19	7.16	102	87	82	79
14						31.96	31.57	33.83	31.55	5.75					104	89	84	81
16						33.54	33.15	35.41	33.13	5.75					106	91	86	83
18	5	184TC	182TC	184TC		36.69	35.31	38.19	36.69	6.87	8.86	8.88	8.86	9.02	139	128	116	109

NOT FOR CONSTRUCTION, INSTALLATION OR APPLICATION PURPOSES UNLESS CERTIFIED.									
CERTIFIED FOR:									
CUSTOMER ORDER NO:					IDENTIFICATION NO:			FLANGES	
PUMP DATA	SIZE	MODEL	CURVE NO.	GPM	HEAD (FT)	ROTATION	SUCTION	DISCHARGE	
						CW	300 #	300 #	
MOTOR DATA	HP	RPM	VOLTS	PHASE	HERTZ	FRAME SIZE	ENCLOSURE		
SHOP ORDER:					CERTIFIED BY:			DATE	

SUPERSEDES ALL PREVIOUS ISSUES



NOT FOR CONSTRUCTION, INSTALLATION OR APPLICATION PURPOSES UNLESS CERTIFIED.								
CERTIFIED FOR:								
CUSTOMER ORDER NO:				IDENTIFICATION NO:			FLANGES	
PUMP DATA	SIZE	MODEL	CURVE NO.	GPM	HEAD (FT)	ROTATION	SUCTION 300 #	DISCHARGE 300 #
	HP	RPM	VOLTS	PHASE	HERTZ	CW	ENCLOSURE	
MOTOR DATA						FRAME SIZE		
SHOP ORDER:			CERTIFIED BY:				DATE	

SUPERSEDES ALL PREVIOUS ISSUES

**CONSTRUCTION:** 304 STAINLESS STEEL  
**NOMINAL FLOW:** 30 GPM  
**CAPACITIES:** 7 - 45 GALLONS PER MINUTE  
**HEADS:** 17 - 422 PSI TDH  
**STAGING:** 2 - 30  
**MINIMUM FLOW:** 7 GPM  
**MAXIMUM WORKING PRESSURE:** 360 PSI (25 BAR) FOR THE ANSI FLANGE VERSION  
**TEMPERATURES:** STANDARD LIQUID TEMPERATURES FROM -20°F TO 250°F (-30°C TO 120°C)

**5SV (e-SV)**  
**60 Hz 3500 RPM**

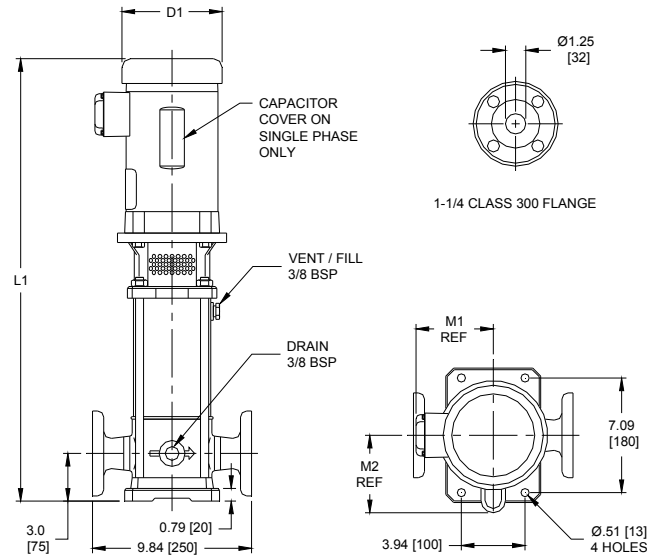
**MOTOR**

- STANDARD NEMA TC FRAME MOTORS IN OPEN DRIP PROOF OR TOTALLY ENCLOSED FAN COOLED ENCLOSURES.
- STANDARD VOLTAGE:
  - SINGLE PHASE: 115-208/230V UP TO 3 HP OR 208-230V FOR 5 HP
  - THREE PHASE, 2 POLE: 208-230/460V, 60 HZ UP 75 HP

COMPONENT	MATERIAL
PUMP BODY	AISI 304 STAINLESS STEEL
IMPELLER	AISI 304 STAINLESS STEEL
DIFFUSER	AISI 304 STAINLESS STEEL
CASING	AISI 316L STAINLESS STEEL
SHAFT	AISI 316 STAINLESS STEEL
ADAPTER	ASTM CLASS 35/40B CAST IRON
BASE	A384.0-F ALUMINUM
COUPLING	A384.0-F ALUMINUM
SEAL PLATE	AISI 316L STAINLESS STEEL
ELASTOMERS	VITON (OPT. EPDM)
COUPLING GUARD	AISI 304 STAINLESS STEEL
SHAFT SLEEVE AND BUSHING	TUNGSTEN CARBIDE
FILL/DRAIN PLUGS	AISI 316 STAINLESS STEEL
TIE RODS	A29 GR. 1045 CARBON STEEL / ZINC PLATED
WEAR RING	PPS
SEAL GLAND	AISI 316 STAINLESS STEEL

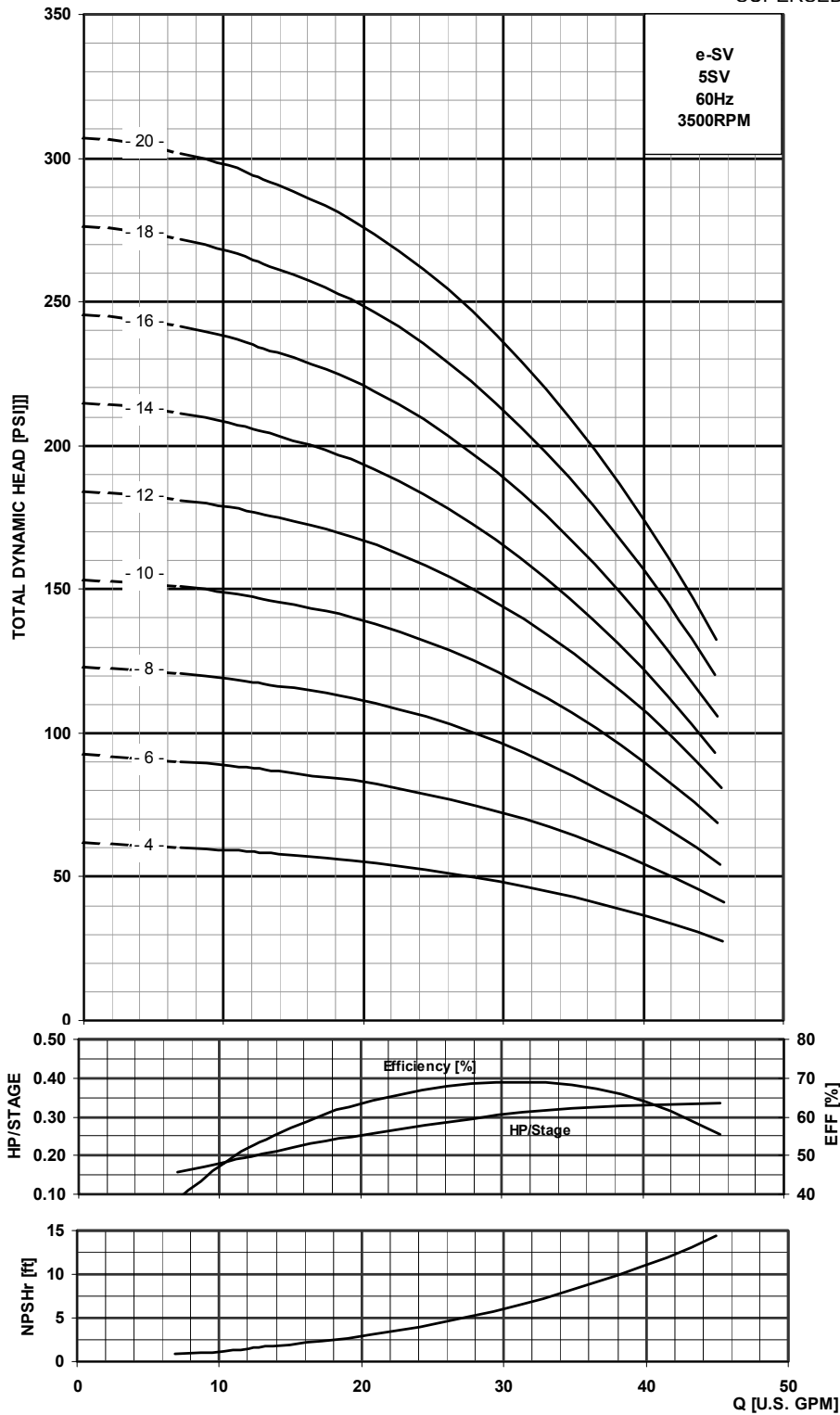
MECHANICAL SEAL	ROTATING FACE 1	STATIONARY FACE 2	ELASTOMERS 3
CODE NO.			
0	CARBON	SILICON CARBIDE GRAPHITE FILLED	VITON



STAGE	HP	MOTOR				DIMENSIONS (IN.)								WEIGHT (LBS.)							
		NEMA FRAME				L1				M (REF.)	D1 (MAX.)				PUMP & MOTOR						
		ODP 1Φ	ODP 3Φ	TEFC 1Φ	TEFC 3Φ	ODP 1Φ	ODP 3Φ	TEFC 1Φ	TEFC 3Φ		TEFC 1Φ	ODP 1Φ	TEFC 3Φ	ODP 3Φ	TEFC 1Φ	ODP 1Φ	TEFC 3Φ	ODP 3Φ			
4	1 1/2	56C				22.40		22.92		21.64		5.74		7.19		6.19		70	62	53	53
6	2	56C				24.49		25.37		24.10		5.74		7.19		6.19		84	76	66	65
8	3	56C				26.85	26.46	28.72	26.44	5.75	7.19	6.62	7.19	7.16	99	84	79	76			
10						28.42	28.03	30.29	28.01	5.75					101	86	81	78			
12	5	184TC	182TC	184TC		32.36	30.98	33.86	32.36	6.87	8.86	8.88	8.86	9.02	134	123	111	104			
14						34.32	32.94	35.82	34.32	6.87					137	126	114	107			
16						38.26	36.88	39.76	38.26	6.87					139	128	116	109			
18	7 1/2	213TC	184TC	213TC	184TC	39.79	39.84	41.44	41.34	8.05	10.62	8.89	8.86	8.88	170	150	135	125			
20				40.58	40.63	42.23	42.13	8.05	173	153					138	128					

NOT FOR CONSTRUCTION, INSTALLATION OR APPLICATION PURPOSES UNLESS CERTIFIED.									
CERTIFIED FOR:									
CUSTOMER ORDER NO:					IDENTIFICATION NO:			FLANGES	
PUMP DATA	SIZE	MODEL	CURVE NO.	GPM	HEAD (FT)	ROTATION	SUCTION	DISCHARGE	
						CW	300 #	300 #	
MOTOR DATA	HP	RPM	VOLTS	PHASE	HERTZ	FRAME SIZE	ENCLOSURE		
SHOP ORDER:					CERTIFIED BY:			DATE	

SUPERSEDES ALL PREVIOUS ISSUES



NOT FOR CONSTRUCTION, INSTALLATION OR APPLICATION PURPOSES UNLESS CERTIFIED.									
CERTIFIED FOR:									
CUSTOMER ORDER NO:				IDENTIFICATION NO:			FLANGES		
PUMP DATA	SIZE	MODEL	CURVE NO.	GPM	HEAD (FT)	ROTATION	SUCTION	DISCHARGE	
						CW	300 #	300 #	
MOTOR DATA	HP	RPM	VOLTS	PHASE	HERTZ	FRAME SIZE	ENCLOSURE		
SHOP ORDER:				CERTIFIED BY:			DATE		