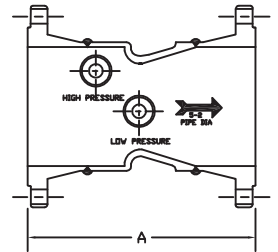
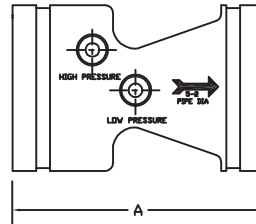
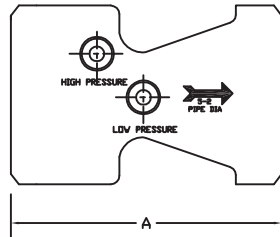
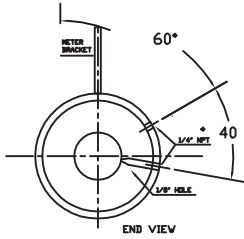
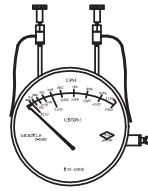


Supersedes all previous issues

## GVI FLOWMETER

CONSTRUCTION & SPECIFICATIONS	
MATERIALS:	MACHINED 1018 / 1026 CARBON STEEL or CAST CARBON STEEL "WCB"
VALVES:	1/4" BRASS BALL
FLANGE OPT:	150# ANSI B 16.5 300# ANSI B 16.5
ID TAG:	POLYCARBONATE

METER DATA	
CONSTRUCTION:	ALUMINUM BODY
OPERATION:	DIAPHRAGM (BUNA CONVOLUTED)
ACCURACY:	+ 2% FULL SCALE
TEMPERATURE:	180°F / 80°C
PRESSURE:	500 PSIG - 3450 KPA
APPROX. WEIGHT:	3.75 LBS (1.7 KGS)
4" DIAL STANDARD - 6" DIAL AVAILABLE	



BUTT WELD / GROOVED

BUTT WELD

GROOVED

FLANGED

GPM	MODEL NO.	PIPE SIZE	METER RANGE MIN. & MAX. GPM	LENGTH (DIM A)		
				BUTT WELD / GROOVED	150 # (RF)	300 # (RF)
25	1.25-25	1-1/4	12.5-50	4.875 (123.8)	4.250 (107.9)	10.000 (254)
50	2-50	2	25-100	5.000 (127)	3.220 (81.8)	N/A
100	50-200	2-1/2	50-200	4.000 (101.6)	9.250 (235)	10.000 (254)
150	3-150	3	75-300	4.000 (101.6)	9.375 (238.1)	10.250 (260.3)
200	3-200	3	100-400	4.000 (101.6)	9.375 (238.1)	10.250 (260.3)
250	4-250	4	125-500	5.375 (136.5)	11.375 (288.9)	12.125 (308)
300	4-300	4	150-600	5.375 (136.5)	11.375 (288.9)	12.125 (308)
400	4-400	4	200-800	5.375 (136.5)	11.375 (288.9)	12.125 (308)
450	4-450	4	225-900	5.375 (136.5)	11.375 (288.9)	12.125 (308)
450	5-450	5	225-900	6.000 (152.4)	13.000 (330.2)	13.750 (349.3)
500	5-500	5	250-1000	6.000 (152.4)	13.000 (330.2)	13.750 (349.3)
500	6-500	6	250-1000	7.000 (177.8)	14.000 (355.6)	14.750 (374.7)
750	5-750	5	375-1500	6.000 (152.4)	13.000 (330.2)	13.750 (349.3)
1000	6-1000	6	500-2000	7.000 (177.8)	14.000 (355.6)	14.750 (374.7)
1250	6-1250	6	625-2500	7.000 (177.8)	14.000 (355.6)	14.750 (374.7)
1500	8-1500	8	750-3000	7.250 (184.1)	15.250 (387.3)	16.000 (406.4)
2000	8-2000	8	1000-4000	7.250 (184.1)	15.250 (387.3)	16.000 (406.4)
2500	8-2500	8	1250-5000	7.250 (184.1)	15.250 (387.3)	16.000 (406.4)
3000	8-3000	8	1500-6000	7.250 (184.1)	15.250 (387.3)	16.000 (406.4)
3500	10-3500	10	1750-7000	8.000 (203.2)	16.000 (406.4)	17.250 (438.1)
4000	10-4000	10	2000-8000	8.000 (203.2)	16.000 (406.4)	17.250 (438.1)
4500	10-4500	10	2250-9000	8.000 (203.2)	16.000 (406.4)	17.250 (438.1)
5000	12-5000	12	2500-10000	12.000 (304.8)	21.000 (533.4)	22.250 (565.2)

Factory Mutual Approved.

<b>NOT FOR CONSTRUCTION, INSTALLATION OR APPLICATION PURPOSES UNLESS CERTIFIED</b>		
CERTIFIED FOR:		
CUSTOMER ORDER NO.:	TAG NO.	
SHOP ORDER:	CERTIFIED BY:	DATE: