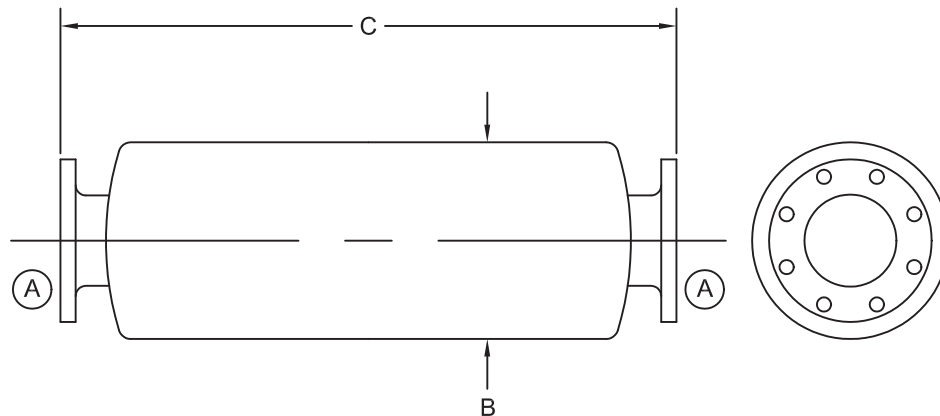


Supersedes all previous issues

## MUFFLER – CLARKE

**MATERIAL** ALUMINIZED/CARBON STEEL  
**TYPE** END IN, END OUT  
**APPROX. ATTENUATION** **INDUSTRIAL: 12-18 dB**  
**RESIDENTIAL: 18-25 Db**



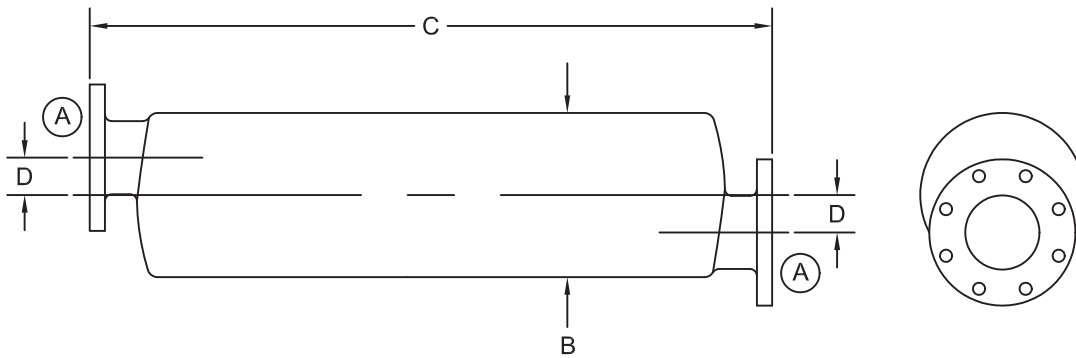
TYPE	MODEL	A	B	C	WT (lb)
INDUSTRIAL	JIE04-300064	4.0	10.00 (254)	32.00 (812.8)	31
	JIE05-300065	5.0	12.00 (304.8)	44.00 (1117.6)	45
	JIE06-300066	6.0			50
	JIE07-300068	8.0	18.00 (457.2)	56.00 (1422.4)	120
RESIDENTIAL	JRE25-500072	2.5*	8.00 (203.2)	30.00 (762)	24
	JRE03-500073	3.0*		31.00 (787.4)	26
	JRE04-500074	4.0	10.00 (254)	44.00 (1117.6)	44
	JRE05-500075	5.0	12.00 (304.8)	56.00 (1422.4)	75
	JRE06-500076	6.0			
	JRE08-500078	8.0	18.00 (457.2)	68.00 (1727.2)	155

\*2.5" and 3.0" supplied with NPT Threaded Connections.

<b>NOT FOR CONSTRUCTION, INSTALLATION OR APPLICATION PURPOSES UNLESS CERTIFIED</b>		
CERTIFIED FOR:		
CUSTOMER ORDER NO.:	TAG NO.	
SHOP ORDER:	CERTIFIED BY:	DATE:

**MUFFLER – CUMMINS**

**MATERIAL** ALUMINIZED  
**TYPE** END IN, END OUT  
**APPROX. ATTENUATION** **INDUSTRIAL: 12-18 dB**  
**RESIDENTIAL: 18-25 Db**



TYPE	MODEL	A	B	C	D	WT (lb)
INDUSTRIAL	41140-F	4.0*	10.10 (256.54)	38.00 (965.2)	2.30 (58.42)	47
	41150-F	5.0	12.10 (307.34)	37.90 (962.66)	2.80 (71.12)	58
	41160-F	6.0	14.10 (358.14)	38.40 (975.36)	3.40 (86.36)	76
	41180-F	8.0	18.10 (459.74)	58.00 (1473.2)	0.00 (0)	155
RESIDENTIAL	41225-P	2.5*	9.00 (228.6)	42.80 (1087.12)	1.50 (38.1)	31
	41230-P	3.0*	10.10 (256.54)	44.00 (1117.6)	2.75 (69.85)	40
	41240-F	4.0*		55.00 (1397)	2.31 (58.674)	65
	41250-F	5.0	14.10 (358.14)	51.40 (1305.56)	3.61 (91.694)	84
	41260-F	6.0		65.40 (1661.16)	3.60 (91.44)	110
	41280-F	8.0		22.20 (563.88)	64.00 (1625.6)	0.00 (0)

\*2.5", 3.0" and 4.0" supplied with NPT Threaded Connections.

<b>NOT FOR CONSTRUCTION, INSTALLATION OR APPLICATION PURPOSES UNLESS CERTIFIED</b>		
CERTIFIED FOR:		
CUSTOMER ORDER NO.:	TAG NO.	
SHOP ORDER:	CERTIFIED BY:	DATE: