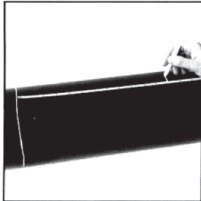
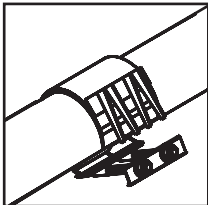


Installation Instructions
Type 266
Full Circle® Repair Clamps (Fabricated Lugs)

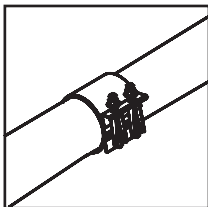


Step 1
Thoroughly clean the pipe where the clamp will be installed.

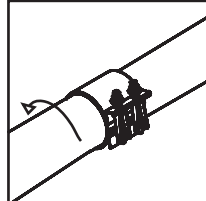
Step 2
If conditions permit, place a reference mark on the pipe a measured distance from the center of the break or damaged area.



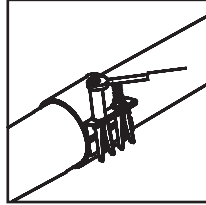
Step 3
Loosen nuts so that they are flush with the top of studs and place the clamp around the pipe, centered over the break or damaged area, with the gasket flap at the top. Note: For optimum product performance the fitting should be lubricated with soapy water or other suitable lubricant. For multi band clamps, the gap between bands is approximately 3/8 inch for pipe diameters near the bottom of the clamp O.D. range and approximately 1 1/4 inch for pipe diameters near the top of the clamp O.D. range.



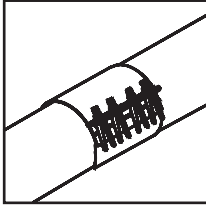
Step 4
Tuck the gasket flap in place and mesh the lug fingers by pulling the keeper bar upward and snap the lip over the finger weldment base. Tighten nuts finger tight. Note: The clamp may be assembled beside the break or damaged area and slid into position, if the pipe surface is wet or has been lubricated.



Step 5
Rotate the clamp to ensure proper seating of the gasket, and position the nuts for convenient tightening.



Step 6
Tighten the nuts working from the center outward. Completely tightening the center nut will usually stop or sufficiently retard the leakage to simplify completion of the installation.



Step 7
When the nuts have been tightened sufficiently to stop the leakage, measure from the reference mark (Step 2) to the center of the clamp to see if the clamp is properly positioned over the break or damaged area. Loosen the nuts and reposition the clamp if necessary. For multi band clamps, always maintain the same gap for bands and between each end of bands.



Step 8
Recheck the tightness, and torque the nuts as evenly as possible to the recommended torque values listed below. The use of a torque wrench is recommended.

NOTE

When a gap between the ends of the pipes are 1 inch or greater, a short section of pipe should be put in the opening or a thin strip of sheet metal wrapped around it to provide support to the gasket. Use discretion on larger pipe O.D.s.

WARNING:

DO NOT EXCEED THE FOLLOWING NUT TORQUES:

- Through 4.73 O.D. - 50 ft. lbs.
- Above 4.73 O.D. - 70 ft. lbs.

NOTE

When a section of pipe wall equal to 40% or more of the pipe circumference is broken away, a section of sheet metal should be placed over the opening to provide a sealing surface for the gasket.



WARNING:
These products do not restrain against axial pipe movement.





Gas

TI-062

Installation Instructions
Type Type 266
Full Circle® Repair Clamps (Fabricated Lugs)

Clamp	Size	Working Pressure*
Single Band	2"-10" Nominal	125 PSI
Single Band	12"-14" Nominal	100 PSI
Double Band	3" - 12" Nominal	125 PSI

*Pressures are based on tests performed on full circumferential breaks. The amount of pressure that a full circle clamp will contain is proportionate to the diameter of the clamp and the amount of torque applied to the bolts. Small diameter clamps will have a higher pressure rating than their larger counterparts (regardless of manufacturer). On any given installation, the pressure capability of a clamp is influenced by the type and extent of damage, service conditions, environmental conditions and installation workmanship.

STANDARD LIMITED WARRANTY

Smith-Blair, Inc. warrants its products to be free of defects in materials and workmanship for a period of one (1) year from the date of shipment by Smith-Blair, Inc. (the "Warranty Period"). Dated proof of purchase, such as a bill of sale, is required to establish warranty eligibility. If a product fails to perform due to a defect in materials or workmanship during the Warranty Period, Smith-Blair, Inc. will repair or, at Smith-Blair, Inc.'s option, replace the product with the same or comparable item. In the event that the product cannot be repaired and a suitable replacement item is not available, Smith-Blair, Inc. will refund the original purchase price shown on the proof of purchase. In all cases, the customer is responsible for returning the allegedly defective product to the factory or warehouse designated by Smith-Blair, Inc.

THIS LIMITED WARRANTY IS EXCLUSIVE AND IS IN LIEU OF ANY EXPRESS OR IMPLIED WARRANTY OF MERCHANTABILITY, FITNESS FOR A PARTICULAR PURPOSE, OR OTHER WARRANTY OF QUALITY, OR THOSE ARISING FROM A COURSE OF DEALING, CUSTOM, OR USAGE OF TRADE. THE REMEDIES PROVIDED IN THIS LIMITED WARRANTY STATEMENT ARE THE CUSTOMER'S SOLE AND EXCLUSIVE REMEDIES. IN NO EVENT SHALL SMITH-BLAIR, INC. BE LIABLE FOR DIRECT, INDIRECT, SPECIAL, INCIDENTAL, OR CONSEQUENTIAL DAMAGES, WHETHER BASED ON CONTRACT, TORT, OR ANY OTHER LEGAL THEORY, AND WHETHER ADVISED OF THE POSSIBILITY OF SUCH DAMAGES.

NOTICE

Metal products are subject to corrosion, particularly when used outdoors and/or underground. A large number of factors and local conditions affect the rate of corrosion. Consult a local corrosion expert to determine the life expectancy of this product when used with your pipeline content, soil, and environment. Also, consult your system designer to determine the suitability of this product in your piping system. Failure to determine the suitability of this product in your application, soil, and/or environment can result in premature product failure. Smith-Blair, Inc. will provide additional information about this product's material specifications at your request.