



# Flygt A-C Series NS Pumps

PUT PROVEN NON-CLOG WASTEWATER PUMPING SOLUTIONS TO WORK FOR YOU



# Wastewater pumping done right

Flygt continues to set the standard in reliable, clog-free pumping with our custom **Flygt A-C Series NS Pumps**.

Every pump is made in America with 150 years of experience and innovation at its core. So you're equipped to handle the demands of modern wastewater today and tomorrow.

## Innovative options

### Optimize™

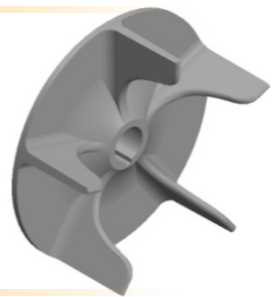
Wireless Condition Monitoring Sensor System

- Monitors mechanical and electrical assets
- Offers predictive maintenance and health guidance
- Delivers unmatched simplicity and convenience



### Shearpeller™

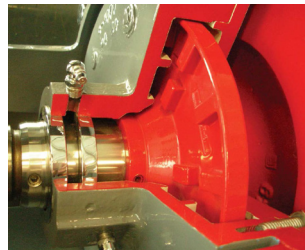
- Uses true clog-free design for a "never-clog" pump
- Handles fluids containing abrasives, large stringy solids, and up to 20% vapor



### Equiseal™

Flushless Dynamic Seal

- Eliminates packing and expensive mechanical seals
- Conserves water and decreases infrastructure/maintenance costs
- Lasts longer than other sealing methods

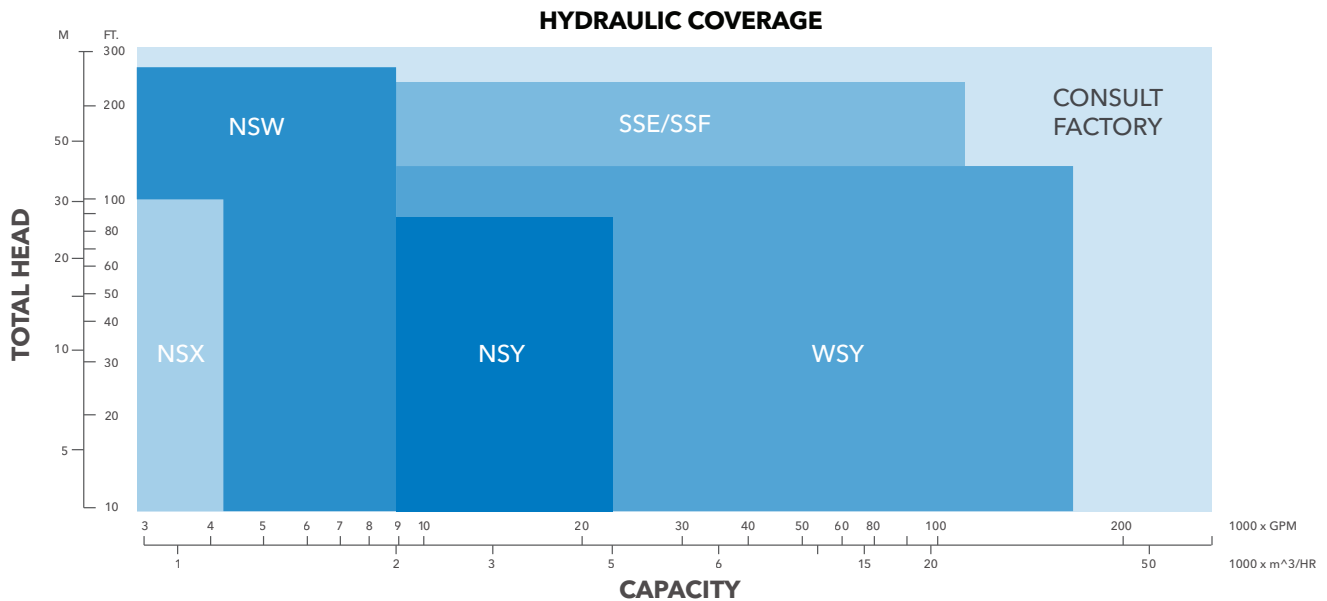


### Immersible Motor

- Helps with dry pit flooding caused by global warming



# Designed to run 24/7, 365



## Flexible installation

We offer multiple designs to fit the needs of small- and mid-sized municipalities.

### Vertical

#### Line shaft coupled

- Mounted on cast or fabricated half pedestal
- For use with intermediate drive shafting

#### Pedestal

- Mounted on cast or fabricated pedestal for direct motor drive
- Ideal for smaller spaces

#### PEG mount

- Mounted vertically on fabricated PEG base for direct motor drive
- Ideal for variable speed applications

#### Tri-base mount

- Pump mounted vertically on fabricated Tri-Base mount
- Ideal for variable speed applications

#### Close-coupled

- True close-coupled pump mounted on cast or fabricated pedestal
- Ideal for packaged lift station applications

### Horizontal

#### Coupling, gear box or v-belt drive options

- Mounted on fabricated steel channel baseplate with motor and OSHA guarded coupling

## Insist on NS

Bring 150 years of wastewater pumping expertise to your operation with **Flygt A-C Series NS Pumps**.

Visit [xylem.com/insist-on-ns/](http://xylem.com/insist-on-ns/) or scan the QR code to learn more and request a quote.



# Xylem |'zīləm|

- 1) The tissue in plants that brings water upward from the roots;
- 2) a leading global water technology company.

We're a global team unified in a common purpose: creating advanced technology solutions to the world's water challenges. Developing new technologies that will improve the way water is used, conserved, and re-used in the future is central to our work. Our products and services move, treat, analyze, monitor and return water to the environment, in public utility, industrial, residential and commercial building services settings. Xylem also provides a leading portfolio of smart metering, network technologies and advanced analytics solutions for water, electric and gas utilities. In more than 150 countries, we have strong, long-standing relationships with customers who know us for our powerful combination of leading product brands and applications expertise with a strong focus on developing comprehensive, sustainable solutions.

**For more information on how Xylem can help you, go to [www.xylem.com](http://www.xylem.com).**

